

IBM Storage

Business Partner Guide

A Seller's Roadmap
to IBM Storage
Solutions

Edited by Jim Hoskins





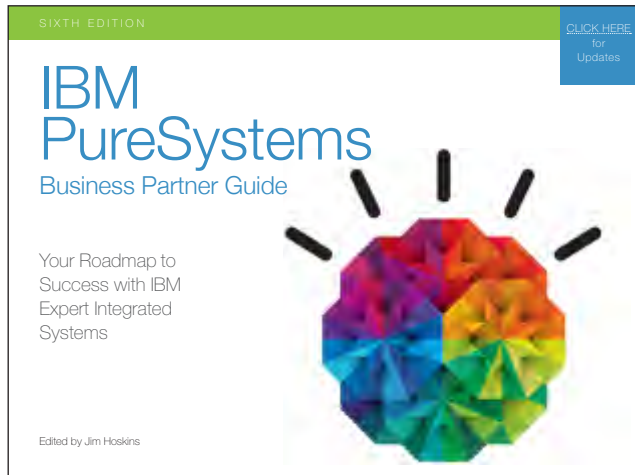
IBM Power Systems Business Partner Guide

Jim Hoskins
[free download](#)
ebook (PDF)



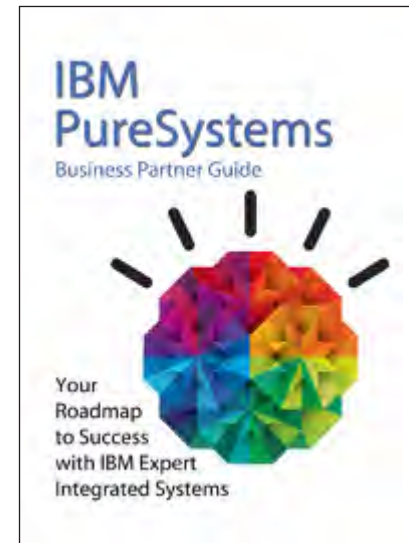
IBM Smarter Workforce Business Partner Guide

Jim Hoskins
[free download](#)
ebook (PDF)



IBM PureSystems Business Partner Guide

Jim Hoskins
[free download](#)
ebook (PDF)



IBM PureSystems Business Partner Guide, Mobile Edition for iPhone/iPad

Jim Hoskins
[free download](#)
ebook (PDF)

For more information email us at info@maxpress.com

Notices

This publication is designed to provide accurate and authoritative information in regard to the subject matter covered. It is offered with the understanding that the publisher is not engaged in rendering professional services. If legal, accounting, medical, psychological, or any other expert assistance is required, the services of a competent professional person should be sought. ADAPTED FROM A DECLARATION OF PRINCIPLES OF A JOINT COMMITTEE OF THE AMERICAN BAR ASSOCIATION AND PUBLISHERS.

Reproduction or translation of any part of this work beyond that permitted by Section 107 or 108 of the 1976 United States Copyright Act without the permission of the copyright owner is unlawful. Requests for permission or further information should be addressed to the Permissions Department, Maximum Press.

This ebook was sponsored by IBM. This ebook utilized information provided by IBM and other companies including publicly available data. This report represents Maximum Press's viewpoint and does not necessarily represent IBM's position on these issues.

Acknowledgments

Many people gave assistance in preparation of this guidebook. Some provided information concerning their product area of expertise. Others acted as reviewers and provided helpful comments. To all of those who assisted... THANK YOU!!

Disclaimer

The purchase of computer software or hardware is an important and costly business decision. While the author and publisher of this guidebook have made reasonable efforts to ensure the accuracy and timeliness of the information contained herein, the author and publisher assume no liability with respect to loss or damage caused or alleged to be caused by reliance on any information contained herein and disclaim any and all warranties, expressed or implied, as to the accuracy or reliability of said information.

This publication is not intended to replace the manufacturer's product documentation or personnel in determining the specifications and capabilities of the products mentioned in this publication. The manufacturer's product documentation should always be consulted, as the

specifications and capabilities of computer hardware and software products are subject to frequent modification. The reader is solely responsible for the choice of computer hardware and software. All configurations and applications of computer hardware and software should be reviewed with the manufacturer's representatives prior to choosing or using any computer hardware and software.

Trademarks

The words contained in this text which are believed to be trademarked, service marked, or otherwise to hold proprietary rights have been designated as such by use of initial capitalization. No attempt has been made to designate as trademarked or service marked any words or terms in which proprietary rights might exist. Inclusion, exclusion, or definition of a word or term is not intended to affect, or to express judgment upon, the validity or legal status of any proprietary right which may be claimed for a specific word or term.

Contents

YOUR EIGHT-STEP QUICK START.	7
1. Check for Updated Editions of This Guide	7
2. Apply for Your IBM PartnerWorld Membership	7
3. Plug in to IBM Product and Program Communications	7
4. Understand the Express Seller Program	7
5. Learn to Quickly Find IBM Product Information	8
6. Learn to Find Competitive Information	8
7. Try Out “Know Your IBM”	8
8. Make Your Training and Certification Plan	8
INTRODUCTION	9
About This Guide	9
Products May Vary from Country to Country.	9
How to Use This Guide.	9
Reader Feedback	10
CHAPTER1: IBM and System Storage Basics	11
Why Partner with IBM?	12
Smarter Planet.	12
Using Analytics, Not Instinct.	13
Social: The New Production Line	14
No Individual Is a “Segment”.	14
Finding Success on a Smarter Planet	15
Infrastructure Matters	15
Optimizing Data Economics	16
IBM Smarter Storage.	16
Efficient by Design	16

Self-optimizing	16
Cloud Agile	16
Software Defined Storage	17
CHAPTER 2: Storage Tools and Resources.	18
Identifying Storage Sales Opportunities	19
General	19
Storage Efficiency	19
Data Protection.	19
Typical Findings After Asking the Above Questions	19
Qualifying Questions	20
IBM PartnerWorld Program.	21
IBM Storage on PartnerWorld Web Site	21
Incentives and Promotions	22
Storage News and Events	22
System Storage Education	22
Know Your IBM (KYI)	22
System Storage Professional Certification Program	22
IBM Systems College.	23
Sales Tools	23
System Storage Master Resource Kit	23
Sales Conversations	23
Systems Storage Quick Proposals	24
Success Stories, References, Case Studies	24
Competitive Marketing Information	24
IBM COMP Web Site	24
Systems Storage Competitive Sales Tool	24

Adding Value and Increasing the Sale	25	DS8000 series (DS8870).	42
IBM System Clothing Pointers	25	XIV Storage System	44
Attaching Services to Your Proposal	25	SAN Volume Controller	45
IBM Global Financing	26	Scale Out Network Attached Storage (SONAS)	46
Moving Your Business Forward	26	Real-time Compression Appliances STN7800	47
IBM System Storage Specialty	26	Tape Storage.	49
IBM Digital Content Marketing (Web Content Syndication)	27	Tape Storage Cross Reference by Workload Size	49
Social Media Resources for IBM Business Partners	28	<i>Tape Storage for Entry-Level Workloads</i>	49
Getting Help	28	<i>Tape Storage for Mid-size Workloads</i>	49
Technical Support for Business Partners	28	<i>Tape Storage for Enterprise Workloads</i>	50
Systems Presales Advisor Tool.	28	Crossroads ReadVerify Appliance (RVA).	50
CHAPTER 3: System Storage Quick Reference	29	Linear Tape File System Single Drive Edition.	51
Flash Storage Appliances	30	Linear Tape File System Storage Manager	52
FlashSystem 810 and 710.	30	Linear Tape File System Library Edition	52
FlashSystem 820 and 720.	31	Linear Tape File System Enterprise Edition	53
FlashSystem 840	32	7226 Multimedia Storage Enclosure.	54
Disk Storage	33	TS1120 Tape Drive	55
Disk Storage Cross Reference by Workload Size.	33	TS1130 Tape Drive	56
<i>Disk Storage for Entry-Level Workloads</i>	33	TS1140 Tape Drive	57
<i>Disk Storage for Mid-size Workloads</i>	33	TS2240 Tape Drive Express	58
<i>Disk Storage for Enterprise Workloads</i>	34	TS2250 Tape Drive Express	59
DCS3700	34	TS2260 Tape Drive Express.	60
DCS3860	35	TS2340 Tape Drive Express.	61
EXP2500 Express Expansion Unit.	36	TS2350 Tape Drive Express	62
DS5000 series	37	TS2360 Tape Drive Express.	64
EXP5000 Drive Enclosure	38	TS2900 Tape Autoloader Express	65
Storwize V3700	39	TS3100 Tape Library Express	66
Storwize V5000	40	TS3200 Tape Library Express.	67
Storwize V7000 and Storwize V7000 Unified Disk System	41	TS3310 Tape Library	69

TS3500 Tape Library	70	IBM Flex System Fabric	88
TS4500 Tape Library	71	<i>SI4093 System Interconnect Module</i>	88
TS7620 ProtecTIER Deduplication Appliance Express	72	<i>EN4093R 10 Gb Scalable Switch</i>	89
TS7650G ProtecTIER Deduplication Gateway	73	<i>CN4093 10 Gb Converged Switch</i>	89
TS7700 Virtualization Engine	73	<i>EN2092 1 Gb Ethernet Scalable Switch</i>	90
Storage Software	74	<i>EN4091 10 Gb Ethernet Pass-Thru</i>	91
Elastic Storage (GPFS)	74	SAN Fabric	91
SmartCloud Storage Access	75	<i>SAN Fabric for Entry-Level Workloads</i>	91
SmartCloud Virtual Storage Center	76	<i>SAN Fabric for Mid-Size Workloads</i>	92
Tivoli Storage Manager	76	<i>SAN Fabric for Enterprise Workloads</i>	92
Tivoli Storage Manager for Virtual Environments	77	<i>SAN Specialty Switches</i>	92
Tivoli Storage Productivity Center	77	<i>SAN b-type Switches</i>	92
Tivoli Storage FlashCopy Manager	78	<i>SAN24B-4 Express</i>	92
Tivoli Storage Manager Fastback	78	<i>SAN24B-5</i>	93
Storage and Data Services	79	<i>SAN48B-5</i>	94
Systems Lab Services and Training—Storage Consulting Services	79	<i>SAN96B-5</i>	94
CHAPTER 4: System Networking and SAN	81	<i>b-type Specialty Switches</i>	95
IBM System Networking	82	<i>SAN06B-R</i>	95
IBM Software Defined Network for Virtual Environments	82	<i>SAN32B-E4</i>	95
IBM RackSwitch Portfolio	82	<i>Brocade VDX 6730 Converged Switch</i>	96
<i>RackSwitch G7028</i>	82	<i>SAN b-type Directors</i>	97
<i>RackSwitch G8000</i>	83	<i>SAN384B-2 and SAN768B-2</i>	97
<i>RackSwitch G8052</i>	84	Cisco MDS	98
<i>RackSwitch G8124E</i>	84	<i>Cisco MDS 9148</i>	98
<i>RackSwitch G8264</i>	85	<i>Cisco MDS 9250i</i>	98
<i>RackSwitch G8264T</i>	85	<i>Cisco MDS 9222i</i>	99
<i>RackSwitch G8264CS</i>	86	<i>Cisco MDS 9506, 9509, and 9513</i>	100
<i>RackSwitch G8316</i>	87	<i>Cisco MDS 9710 Multilayer Director</i>	101
<i>RackSwitch G8332</i>	87		

If you are a new IBM Business Partner, take these eight steps to “hit the ground running.”

1. Check for Updated Editions of This Guide

This guide has the ability to check for more current editions which are released periodically. Simply click on the “More on the Web” link

provided here (or the link on the cover) and

MORE ON THE WEB

- [Check for updates now](#)

this guide will automatically check to see if you have the most current edition. If you don't, you will be able to download the latest edition immediately.

2. Apply for Your IBM PartnerWorld Membership

The IBM PartnerWorld Web site is your source for information on all things related to being an IBM Business Partner (e.g., Business Partner relationships, guidelines, support, product info, etc.). You will need a user ID and a password to gain access

MORE ON THE WEB

- [Get your PartnerWorld user ID](#)
- [Explore PartnerWorld](#)
- [PartnerWorld contact phone numbers by country](#)

to some areas of the site. If you have any questions, call PartnerWorld for help (follow the link in the “More on the Web” box to get the correct phone number for your country).

3. Plug in to IBM Product and Program Communications

Staying informed is one key to success. IBM has a special page on PartnerWorld that helps you do just that. Here you will find new product announcements, letters to Business Partners, customer success stories, educational opportunities, and more.

MORE ON THE WEB

- [IBM Systems Storage Partner Portal](#)
- [Get plugged in to IBM product and program communications](#)
- [Barry Whyte \(Storage Virtualization\) blog](#)
- [Tony Pearson \(Inside IBM Storage\) blog](#)

4. Understand the Express Seller Program

Express Seller is designed to help IBM Business Partners accelerate sales of IBM products and services to small and medium businesses. IBM provides key offerings that meet your clients' business needs

MORE ON THE WEB

- [Express Seller Toolkit](#)

at competitive prices and provides extensive marketing support including “air cover” advertising and customizable materials to help you generate leads.

5. Learn to Quickly Find IBM Product Information

IBM maintains a search page that allows you to quickly find detailed product information from IBM announcement letters (one of these is released for every product IBM announces), the IBM Sales Manual (a comprehensive collection of detailed info on all IBM products), and much more. Give it a try so you will know how to find what you need when you need it. Of course you can also find product details on the System Storage section of IBM.com. This is a key resource for you and your customers.

MORE ON THE WEB

- [IBM product information search page](#)
- [System Storage section of IBM.com](#)

6. Learn to Find Competitive Information

IBM consistently updates information about the competitors you will encounter and their products. One good source of competitive information is the COMP content on PartnerWorld. You will need your user ID and password.

7. Try Out “Know Your IBM”

Accelerate your learning and knowledge of IBM programs and products with Know Your IBM (KYI), a permission-based interactive enablement initiative which provides you with quick-learn modules featuring content specifically written to help you understand the customer benefits and value propositions of IBM products and solutions. You can get points by completing these modules which can be redeemed for merchandise at participating retailers. You can earn additional points for reporting sales through KYI.

MORE ON THE WEB

- [“Know Your IBM” training modules](#)

8. Make Your Training and Certification Plan

Knowledge is power. IBM offers many opportunities to learn and to demonstrate your knowledge through certification. These certifications are regularly updated to include the roles most critical to successfully selling and technically supporting the storage product portfolio. Now is

a good time to make your plans. Select your role from the list of certifications. Follow the links to complete descriptions of each role, skills, recommended education, and more. You can select courses and build tailored enablement roadmaps with the help of Systems College (formerly the STG SMART Zone). This is your one stop for all learning on IBM Systems offerings for servers and storage.

MORE ON THE WEB

- [Explore training and certification opportunities](#)
- [Systems College](#)

About This Guide

This guide brings together—all in one place—the resources you need to be successful as an IBM Storage Business Partner. It contains information gathered and adapted with permission from multiple IBM and non-IBM sources. Also, there are embedded links to more-detailed information and news available on the Internet, so you always have the most current information at your fingertips. We are confident you will find this a useful reference tool.

As we are always working to better help you succeed, please forward any comments on or suggested improvements to this guide to info@maxpress.com.

Products May Vary from Country to Country

Keep in mind that the specific products and services offered by IBM sometimes vary from country to country. As such, you will need to get into the details of your own country's offerings by following the "More on the Web" links provided throughout this guide with your country selected in the upper area of the screen.

How to Use This Guide

This guide has been specially designed to be read on your computer screen using the free Adobe Acrobat Reader software or a supporting Web browser. Alternately, you can print this guide on almost any printer and read the material anywhere.

Reading on a computer screen at your desk isn't as cozy as reading a printed page while lying on a towel at the beach. If you give it a fair chance, however, you will find that navigating the bookmarks along the left side of the screen provides an effective way to get to the information you need—quickly. Further, the instant access to expanded information provided by the many embedded Web links, along with the "search" function, also makes using this guide "on screen" worthwhile. We recommend that you copy this PDF file to your desktop so it will always be only "one click away." If you still want a hard copy, you can print it out on almost any printer.

Links provided throughout this guide (anywhere you see a “More on the Web” box) will lead you to additional information related to the topic at hand resident on the Web. In this way, this publication is a “three-dimensional guide” providing you with information about the topics at the level of detail you choose. To follow a link, simply click on it and a Web browser window will appear on your screen with the requested information. If the link brings you to a password-protected area (e.g., on the IBM PartnerWorld or COMP Web sites), you will be prompted to enter your IBM-issued user ID and password before you are presented with information.

When you are finished exploring, just close or minimize the Web browser window and you will arrive back at the guide. You are encouraged to explore all links that interest you to get the most out of this guide. You must have an active connection to the Internet to use the embedded links.

To navigate around within this guide, you can:

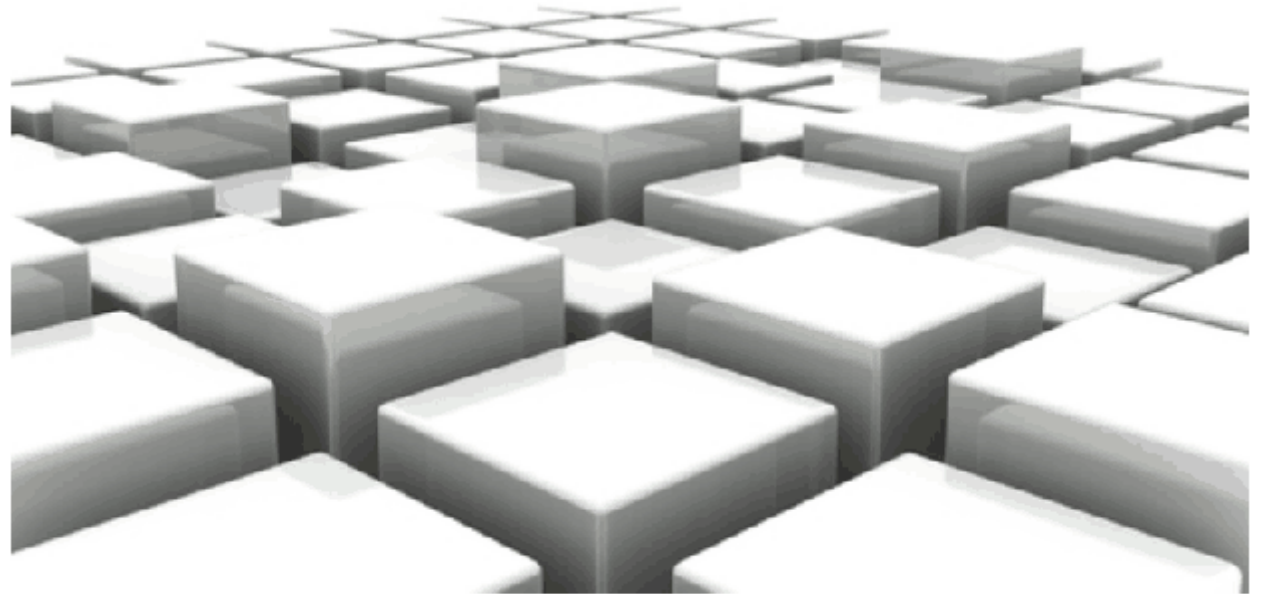
- *Step forward or backward a page at a time using the standard Acrobat Reader navigation toolbar shown along the bottom of your screen*
- *Click on the “Bookmark” links shown on the left side of your screen to go directly to that part of the guide*
- *Click on the “Table of Contents” section and click on the links to go directly to that part of the guide*
- *Search for keywords in the document using the Acrobat Reader “Find” function (found on the toolbar).*

Reader Feedback

We welcome your feedback on any aspect of this guide, so please email your comments or suggestions to info@maxpress.com.

IBM and System Storage Basics

In this chapter we take a look at some business basics about IBM to consider as you move forward building your business



Why Partner with IBM?

If you are seeking to truly differentiate yourself in the marketplace by extending your market reach with more profitable end-to-end solution offerings, IBM is uniquely positioned to help you make this happen. IBM provides you with a broad portfolio of servers, software, expert integrated systems, and services, coupled with a rich array of channel programs that enable you to take your business wherever you want it to go.

By providing innovative technology that delivers flexibility and high performance, easy to administer programs, and flexible financing options, IBM has an unmatched

understanding and appreciation of channel importance that translates into success and prosperity for our partners.

Consider these facts about IBM:

- *One of the world's top 10 most valuable brands*
- *A market leader in the storage and server industries*
- *In each year for over a decade, IBM has earned more patents than any competitor, according to the U.S. Patent Office.*

It is an exciting time to be involved with information technology. The worlds of business and computer systems are blending in ways that will result in productivity breakthroughs greater than the sum of their parts. Teaming with IBM will allow you to provide the insight, solutions, and innovation that matter to help your customers succeed.

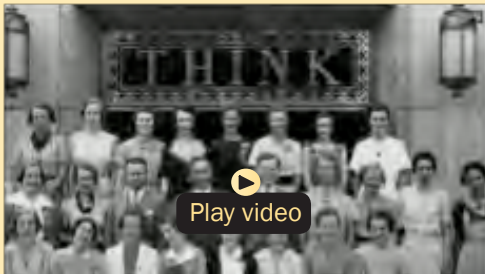
Smarter Planet

Since 2008, IBMers have been working with companies, cities, and communities around the world to build a Smarter Planet. We've seen enormous advances, as leaders have begun using the vast supply of big data to transform their enterprises and institutions through analytics, mobile technology, social business, and the cloud. Big data has changed how these leaders work, how they make decisions, and how they serve their customers. And the ability to harness big data is giving their enterprises a new competitive edge in today's era of "smart."



MORE ON THE WEB

- [About IBM's patent portfolio](#)



IBM History (13:14)

Using Analytics, Not Instinct

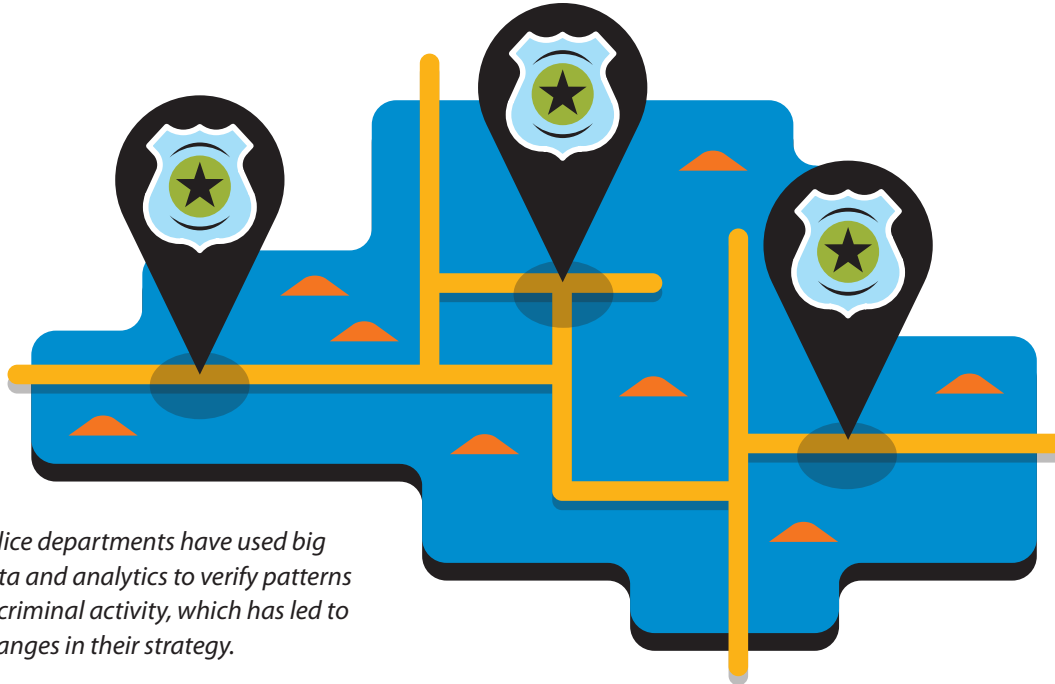
Executives have traditionally regarded experience and intuition as the keys to formulating strategy and assessing risk. That type of thinking may have worked in an earlier time of information scarcity—but not in the time of big data. When every company, every city, every country, every individual is increasingly interconnected with millions of others, the cost of a bad call can be devastating. But analytics is increasingly helping business and

government leaders look beyond their own biases to discern real patterns and anticipate events.

A decade ago, a police department developed an analytics platform that created multi-layer maps and spreadsheets to identify and verify patterns of criminal activity—visualizing knowledge about where, when, and how violent crime takes place. The police department changed its patrolling strategy as a result—and reduced crime by 24 percent.



Social networks shift value in the workplace from knowledge that people possess to knowledge that they can communicate.



Police departments have used big data and analytics to verify patterns of criminal activity, which has led to changes in their strategy.

Social: The New Production Line

In today's knowledge economy, the exchange of ideas has become the new means of production. The advent of social and mobile technology is shifting employers' competitive edge from hiring workers who gather knowledge to hiring workers who communicate it.

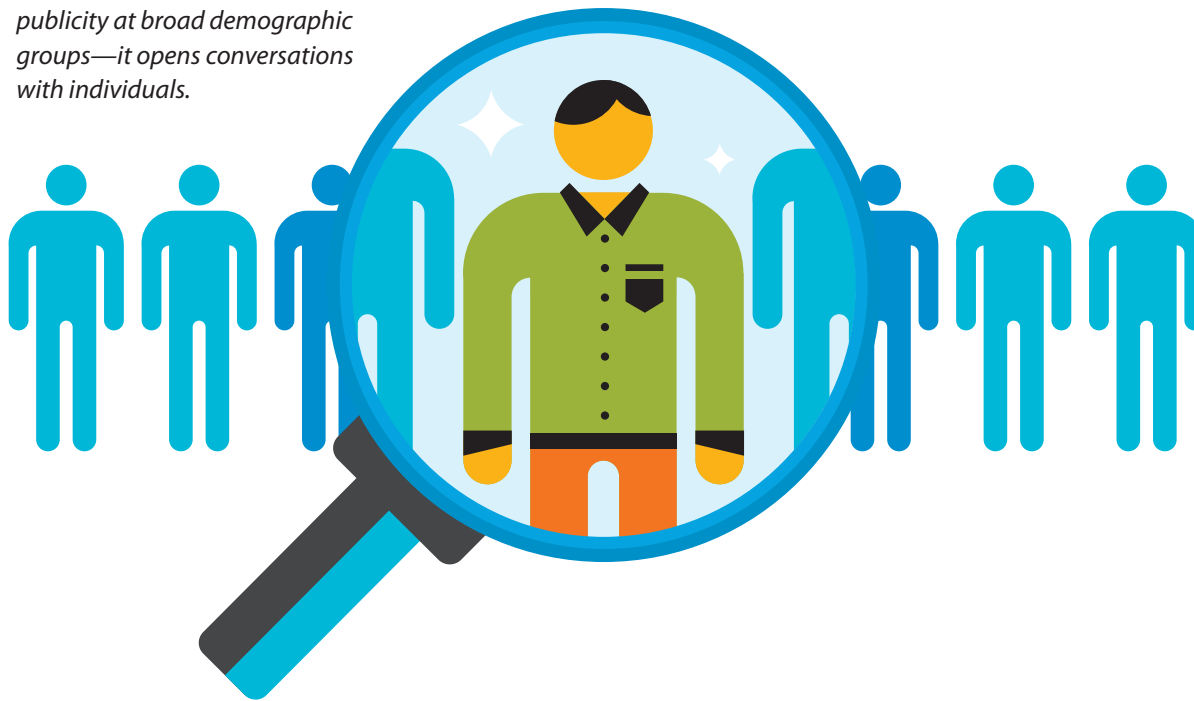
A \$15 billion cement maker wanted to create its first global brand of concrete, which required a coordination of stakeholders from each country. The company didn't build a new lab—it built a social business network. Employees in 50 countries formed one global active community whose collaboration helped launch the brand in a third of the anticipated time.

No Individual Is a "Segment"

In the age of mass production and mass media, marketers generally understood and served broad population "segments." But the age of big data and analytics is revealing customers not as demographic slices—based on age, income, job title, hobby, and the like—but as individuals.

And this change is already underway. Call centers were once evaluated by how quickly they could get employees to spend more time with customers to learn about their needs. Advertising used to be only about selling. Now, smarter marketing starts conversations and delivers useful services—to one individual at a time.

Effective marketing no longer aims publicity at broad demographic groups—it opens conversations with individuals.

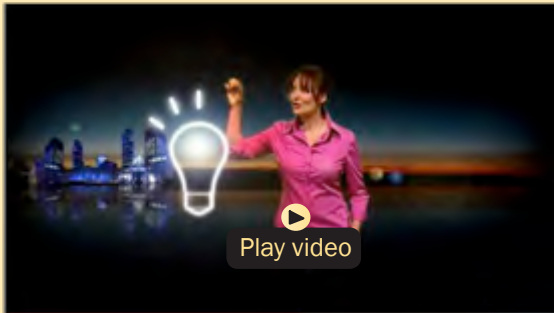


Finding Success on a Smarter Planet

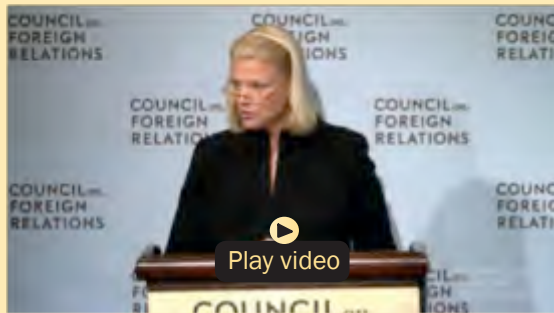
Organizations that adopt these principles, as thousands have, are smarter enterprises. But using technology is only part of the story. The other challenge now is culture: using this emerging technology to change entrenched work practices.

MORE ON THE WEB

- [A Smarter Planet info on IBM.com](#)



A Smarter Planet (2:14)



IBM CEO Ginni Rometty on IBM Smarter Planet (58:17)

Infrastructure Matters

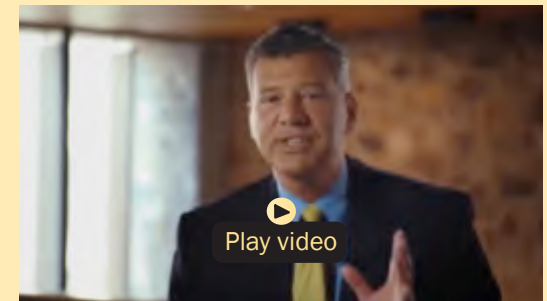
Today, this need is greater than ever as businesses and entire industries are being transformed by the growth of big data, social, mobile, and cloud technologies. With new levels of business insights, organizations are able to deliver personalized experiences and services to match the rising expectation levels of their end users. Customers now expect personalized shopping experiences, evidence-based healthcare, and real-time access to information and services.

In the retail industry, the need to deliver personalized offers to individuals based on their unique preferences and needs drives higher conversion rates and repeat business.

The banking industry is embracing multi-channel bank transformation to extend personalized and unique product bundles and services across all banking channels.

Each of these business and industry transformations is being driven by big data and analytics and requires a new generation of applications that can drive specific business outcomes. These next generation applications leverage business and predictive analytics (analyzing large amounts of both structured and unstructured data) and cognitive (natural language learning) capabilities to provide real-time, data-driven business insights in unprecedented ways. Today more than ever before, infrastructure matters.

MORE ON THE WEB



A Smarter Planet (2:14)

Optimizing Data Economics

Clients need help with their data. Data is the new currency of business—their most critical asset. An enterprise that gains new business insights from data is twice as likely to outperform its competition. But, clients are spending too much money and time managing where their data is stored. They purchase 24 percent more storage every year, but use less than half of the capacity they already have. They spend 70 percent of IT budgets on operations and maintenance instead of innovation and insights. And they don't spend enough on projects that would provide value from their data. Seventy-two percent of companies have not started or are only just planning big data activities.

Mobile, social, and cloud technologies are fueling big data and analytics—requiring greater efficiency and agility in IT infrastructures. The right infrastructure allows clients to shift spending and invest in projects that improve business results. Infrastructure Matters.

Client's need better data economics so they can leverage cloud and analytics to glean business value out of the large volumes of data generated by mobile and social activity. The right storage architecture drives improved data economics by enabling data independence and providing a simple, resilient, and predictable IT environment. IBM Smarter Storage delivers data virtualization, protection, performance and scalability features for any data architecture need.

IBM Smarter Storage

We live on a Smarter Planet where systems are highly instrumented, interconnected, and intelligent. Data is coming from new places, in greater volumes, and at faster rates. Companies able to harness data unlock patterns faster, serve customers better, and outpace competitors. IBM Smarter Storage, a more efficient, automated, and intelligent approach to storage, is Efficient by Design, Self-optimizing, and Cloud Agile.

Efficient by Design

With Smarter Storage, essential storage technologies are built in and tightly integrated. Efficiency is effortless—requiring no manual intervention. Management is intuitive. The benefits include reduced space requirements for active data by up to 80 percent. Clients also save up to 47 percent of administrator time and reduce complexity by up to 30 percent.

Self-optimizing

Smarter Storage analyzes data access patterns, adapts, and improves performance. Sophisticated internal analytics automatically place data on the appropriate storage tier. This can increase performance up to three times with only 3 percent of data on SSDs.

Cloud Agile

Smarter Storage fully participates in highly virtualized cloud environments. IBM and non-IBM storage are managed as one virtual pool. All systems inherit IBM's advanced capabilities. Data is automatically synchronized. Files flow to users wherever they are. This can reduce disk

space needs by up to 50 percent, speed up storage deployment up to 26 percent, and improve application availability by up to 29 percent.

Software Defined Storage

New era cloud environments and applications such as analytics, mobile, and social are driving huge growth in data volumes, making data the new natural resource. But cost-effectively optimizing your current storage environments while at the same time exploiting new opportunities is straining storage budgets. The solution—IBM software defined storage.

IBM's software defined storage offerings unlock the potential of data and increase your business agility and efficiency in ways that weren't possible until now. IBM software defined storage enhances the speed and efficiency of your storage and simplifies migration to new storage.

IBM software defined storage enhances the speed and efficiency of your storage and simplifies migration to new workloads by:

- *Accelerating global access to petabytes of data and billions of files*
- *Changing the economics of storage technology with multi-brand virtualization, intelligent tiering, and open API support (OpenStack, Hadoop, POSIX)*
- *Transforming business models with hybrid cloud storage and data protection for big data analytics*
- *Supporting any storage, any data.*

MORE ON THE WEB

- [Software Defined Storage info on IBM.com](#)

Storage Tools and Resources

This chapter provides you with general information and valuable resources that will help you sell IBM products



Identifying Storage Sales Opportunities

In this section, we offer some “trigger” questions that will help you identify and explore opportunities for selling IBM System Storage.

General

- *Is the customer buying servers? Server buyers tend to buy storage within three months of their server purchase.*
- *Is the number of users of the application increasing? Adding employees or upgrading applications generally leads to additional storage needs.*
- *Are existing storage assets coming off lease or nearing the end of the depreciation cycle? The data on multiple older storage controllers can often be consolidated onto a single newer, faster system with cost savings.*
- *Does the customer already have IBM external storage installed but is running out of capacity? This is an opportunity to upgrade the storage.*

Storage Efficiency

- *Is your data growing and are the costs of managing your storage infrastructure growing?*
- *Are you concerned about how well utilized your storage is or your staff's ability to support this growth?*
- *How satisfied are you with the cost effectiveness of your current storage?*
- *Is the management of your storage infrastructure complex?*
- *Are you looking for new functionality or help to manage your storage growth and costs?*

Data Protection

- *Are your data storage needs growing?*
- *How will this growth impact your ability to adequately protect critical data? With the data growth you are experiencing, what impact have you seen in your backup & recovery?*
- *Can you electronically locate critical business information, documents, email, attachments, and messages when required?*
- *Are you looking for help to improve your company's backup and recovery time and reliability?*

- *Do you need to store all types of information (structured and unstructured) in a single repository which can be configured to archive information with compliance and non-compliance retention needs?*
- *Do you have needs to keep data for long periods of time?*

Typical Findings After Asking the Above Questions

- *Multiple islands of storage are becoming hard to manage and are driving up costs.*
- *Performance is not always sufficient to meet users' needs.*
- *Reliability is not at desirable levels. Even a small outage is a big deal when it happens in a remote location.*
- *Storage capacity is not being used efficiently. Some users and servers need more storage, while capacity on other servers sits idle.*
- *Data backup is becoming hard to manage.*
- *Total storage costs are getting out of control as storage needs rise.*
- *Information is exposed to security risks that are not understood, or not managed.*
- *Regulatory requirements cannot consistently be met at the desired level.*

- *Personnel costs to manage storage are rising rapidly, or there is a shortage of manpower to complete all of the management work in a timely fashion.*

Qualifying Questions

Here are questions you can use to gauge a possible sales opportunity:

- *Are you under pressure to control costs and IT expenditures?*
- *How many servers and what operating systems do you have?*
- *What are the key applications that drive your storage demand?*
- *Can your storage scale easily to meet growth and new application needs?*
- *Are you unable to add additional storage capacity because of budget constraints?*
- *Are you concerned that you can't predict future growth? Do you need a storage system that can be upgraded to higher capacity and performance without losing your initial investment?*
- *Do you often find that you are adding additional servers and associated storage to keep pace with your growth?*
- *Do you need more capacity and performance—at a better price?*
- *Does storage management cost you money for staffing, education, and time?*
- *How much benefit would you see from having a single interface—fewer tools to learn and use—for server and storage management?*
- *Are your storage needs satisfied by the internal storage in the server?*
- *Do you need to lower IT costs and complexity while still providing a computing infrastructure with high levels of server and storage performance typical for data-base and online transaction processing?*
- *Do you have a large number of server/storage platforms and/or operating environments?*
- *What competitive storage or server hardware is installed and which competitor(s) are bidding for the business (EMC, HP, Dell, Sun)?*
- *Do you need to run test applications against live data?*
- *Do you need the ability to set up a disaster recovery plan?*
- *Do you understand the risks and costs associated with data access delay or data unavailability? Do you have the skills to complete an analysis? (IBM does—storage study.)*
- *Are your backup windows getting shorter?*
- *Are you confronted with significant complexities of storage management and looking to simplify the environment?*
- *Do you need to improve the security of your information?*

IBM PartnerWorld Program

The IBM PartnerWorld Program provides IBM Business Partners with the support they need to understand general market trends, plan market and business strategies, and generate demand for IBM hardware, software, or services.

Business Partners who invest the most in IBM receive higher-value benefits and resources from the PartnerWorld program. This investment is recognized through three PartnerWorld membership levels: Member, Advanced, and Premier. Qualification for these membership levels is based on the Business Partner's attainment according to a point system. Points are earned by acquiring skills, developing and selling solutions, driving IBM revenue, and achieving customer satisfaction.

The IBM PartnerWorld program publishes a blog for IBM Business Partners called "Partner Voices" (see the "More on the Web" box).

MORE ON THE WEB

- [Partner Voices on YouTube](#)
- [Partner Voices on Twitter](#)

Once you are an IBM Business Partner, The IBM PartnerWorld Web Site is your central source for information and tools to help you succeed.

IBM Storage on PartnerWorld Web Site

The IBM PartnerWorld Web site has a great deal of information of use to all IBM Business Partners worldwide. On the site you will find the latest presentations and marketing materials (such as brochures, data sheets, and case studies) as well as competitive information, consultant reports, IBM white papers, education and events, tools, technical support, and much more.

There is an IBM System Storage portal on PartnerWorld, which serves as a central repository of much storage information of interest to Business Partners (see the "More on the Web" box).

MORE ON THE WEB

- [System Storage portal on PartnerWorld](#)
- [IBM PartnerWorld Web site home page](#)
- [IBM PartnerWorld news and newsletters](#)
- [PartnerWorld membership levels](#)
- [Join PartnerWorld](#)

In this guide, we have summarized and provided direct links to a great deal of PartnerWorld information of interest to System Storage Business Partners. As such, this publication is your personal "guide" to the PartnerWorld Web site. Just the same, we encourage you to spend some time browsing the PartnerWorld site so you can get a feel for the full scope of resources available to you.

You will need your IBM-assigned user ID and password to access some areas of PartnerWorld. If you don't have your user ID and password, you can contact IBM PartnerWorld for help.

Incentives and Promotions

IBM offers many incentives and promotions for both Business Partners and your clients to help drive sales. You can find a list of the most current incentives and promotions by following the “More on the Web” links.

MORE ON THE WEB

- [Incentives and promotions for storage](#)
- [Cross brand incentives and promotions](#)

Storage News and Events

You can keep current with the fast paced world of IBM System Storage by frequently checking the link shown in the “More on the Web” box.

MORE ON THE WEB

- [IBM Storage news and events](#)

System Storage Education

As with almost any endeavor, time spent educating yourself and your team on appropriate topics such as selling tech-

niques and storage product offerings will help you succeed. In this chapter we discuss two ways you can get the education you need to succeed in selling IBM System Storage products.

Know Your IBM (KYI)

Know Your IBM is a permission-based interactive marketing and selling resource designed for you, our Business Partner sellers. It provides net, customized, online education modules focusing on strategic product and solution areas while rewarding our Business Partners for taking the time to learn and then to sell selected products.

The education helps increase your understanding and awareness of the key features and business benefits of IBM products, solutions, and offerings. Incentives offered in conjunction with Know Your IBM are designed to encourage you to complete the education modules and

MORE ON THE WEB

- [Know Your IBM training modules](#)

provide you rewards for performance. Incentives are awarded at the individual rep level, not to the firm.

System Storage Professional Certification Program

Several certifications are offered to test an individual’s knowledge and skills in a given market segment. The candidate must have general experience in disk, tape and other products in the segment. There are also several product-specific tests that provide candidates with an opportunity to demonstrate their depth of technical expertise through certification.

Follow the path to certification:

- *Select the role that most closely represents your daily tasks.*
- *Review the job role/target audience description and test objectives which describe the skills tested.*

MORE ON THE WEB

- [Professional certification program—Storage](#)
- [Find a PVUE testing center and register to take a test](#)

- Review the recommended training and study aids for the selected test, with a focus on areas where you need to improve your skills.
- Check your readiness to sit for the test by reviewing the sample test or taking the assessment test provided on the certification Web site. Use the results of the assessment test to identify areas where you may still need more preparation.

IBM Systems College

IBM Systems College is your one stop for all learning on IBM Systems offerings for servers, storage, and more. The Systems Subject Matter Expert (SME) training is now part of Systems College.

You now have the option of selecting courses through the learning roadmaps which have been created for specific sales and technical roles or through the course catalog.

The roadmaps have been categorized by basic, intermediate, and advanced to address your specific skill needs and help toward earning your certification.

MORE ON THE WEB

- [IBM Systems College](#)

Find the right level of education quickly with the new options provided or use the Systems College Search feature when looking for a specific topic.

Sales Tools

Through the PartnerWorld Web site, IBM offers Business Partners a wide range of sales tools to help you succeed with IBM Systems Storage solutions. Here we will look at a few key examples.

System Storage Master Resource Kit

The Master Resource Kit provides Business Partners with a package of key client-ready sales and marketing enablement resources. You'll find client-ready presentations and brochures, education resources and opportunities, seller guides, client

MORE ON THE WEB

- [System Storage Master Resource Kit](#)

references, and more, all to help you unleash your selling potential and the power of our unique technologies.

Sales Conversations

IBM has assembled a set of sales conversations to help sellers advance more rapidly through the stages of prepare, engage, and pursue as they identify and progress opportunities. They are designed to guide meaningful solution-oriented discussions with your customers. The sales conversations assets are aligned with the sales cycle—Prepare, Engage, and Pursue. Each conversation includes: (a) Buyer and role-based targeted assets, (b) Best practices to help start conversations and progress/win deals, (c) Targeted client references, (d) Relevant videos, demos, and client presentations.

Sales conversations cover many topics including: Innovation with FlashSystem Storage, Managing Business Critical Data

MORE ON THE WEB

- [Systems Storage Sales Conversations](#)

with Storage, Managing Data Intensive Business Solutions with Storage, etc.

Systems Storage Quick Proposals

Creating a high-quality proposal can be difficult and time consuming. To help streamline this process for you, the IBM Americas Techline team has designed “Quick Proposal” templates you can use to prepare comprehensive proposals for your sales opportunities. Simply download the QP Content Document and customize it for your specific opportunity.

MORE ON THE WEB

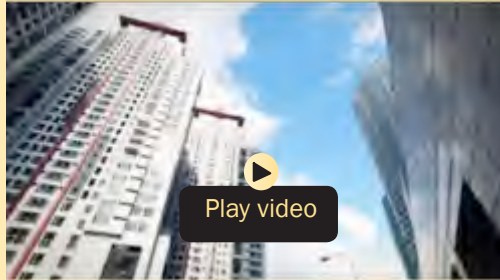
- [Systems Storage Quick Proposals](#)

Success Stories, References, Case Studies

It is often helpful to make prospective customers aware of other businesses that have successfully implemented solutions based on Power Systems. For this reason, IBM maintains a database of existing customer success stories, complete with company profiles, identified needs, solu-

MORE ON THE WEB

- [Systems Storage client references on PartnerWorld](#)
- [Systems Storage success stories on IBM.com](#)



YouTube Channel: IBM Client Videos

tions, and resulting benefits. IBM Business Partners can use these success stories with customers to advance the sell cycle. To see what is available, simply follow the links provided in the “More on the Web” box.

Competitive Marketing Information

IBM Systems Storage solutions offer many unique capabilities that help you deliver business value for your clients and beat the competition. This section describes some tools you can use to hone your competitive edge.

IBM COMP Web Site

The competitive section of PartnerWorld (COMP) is a worldwide portal for information that will help you win in competitive marketing situations. It includes a searchable set of reports, presentations, and quick reference cards about the marketplace, competitors, and competitive products. You will find materials developed by IBM as well as outside sources such as Gartner, IDC, DH Brown, and IDEAS International.

MORE ON THE WEB

- [IBM COMP competitive portal](#)

Systems Storage Competitive Sales Tool

The IBM Systems Storage Competitive Sales Tool is designed to give you the help you need in competitive situations.

MORE ON THE WEB

- [Systems Storage Competitive Sales Tool](#)

It provides quick head-to-head comparisons between IBM storage offerings and major competitive products. It is a stand-alone tool which can be downloaded and used anywhere, any time.

Adding Value and Increasing the Sale

Once a solution begins to take shape for your customer, consider what other products and services can be added to the deal to bring more value to the customer and increase your sales revenue. Let's look at a few ideas to help fuel your thinking.

IBM System Clothing Pointers

Whenever you are proposing the sale of a server, it only makes sense to include the needed storage devices in the original proposal. Selling storage solutions with servers is known as "clothing." Clothing the servers with storage solutions is a proven key to selling success. Follow the links in the "More on the Web" box to see what storage devices to propose with each type of server.

MORE ON THE WEB

- [Compatibility/interoperability info for IBM storage products](#)
- [Storage products for Power Systems](#)
- [Storage products for System z servers](#)
- [Storage software](#)

Attaching Services to Your Proposal

Attaching IBM Global Technology Services to your IBM solution sales gives you a way to enhance your productivity, accelerate sales, and increase deal size today while creating ongoing revenue opportunities for the future—creating offerings that are more attractive to your clients than ever before.



MORE ON THE WEB

- [Service offerings for System Storage](#)

CIOs, IT directors, and business leaders in client organizations of all sizes across all industries see tremendous value in IBM Global Technology Services. Our offerings can provide powerful supplements to their internal resources, opportunities to save money, and programs to enhance the effectiveness of their technology investments. And IBM gives you a way to complement your resources and capabilities. The result is that IBM Global Technology Services can help increase your client satisfaction because you can offer a more complete solution.

IBM Global Services provides structured and standardized approaches backed by industry-leading experts who can help plan, design, install, configure, tune, test, and support solutions; speed time to value; reduce risk; and minimize disruption to IT and business operations.

IBM Global Financing

IBM Global Financing (IGF) continues to focus on meeting customer needs by concentrating on key business areas: leasing and lending, remarketing and refurbishing, and asset management. IGF conducts business in more than 40 countries, financing IBM and non-IBM hardware, software, and services, with a full range of flexible, low-rate offerings. IGF's customers find that financing their information technology solutions offers many advantages in both robust and difficult economic climates because financing frees up their capital for other investments. Many information technology installations, including those for customer relationship management, data mining, and e-business, require a substantial investment. IGF financing enables customers to pay for their new technology in affordable monthly payments during the life of the project. Our customers run the gamut

MORE ON THE WEB

- [IBM Global Financing info on IBM.com](#)

from the smallest, family-owned business purchasing a single server and software to the largest, multinational corporation, acquiring tens of thousands of PCs for offices on several continents. In addition to working directly with customers, we work with IBM Business Partners to provide financing for their clients and to help them build their own businesses.

Moving Your Business Forward

As an IBM Business Partner, you have the opportunity to leverage IBM PartnerWorld program benefits to help build your capabilities and effectiveness in the marketplace. In this section, we look at just a few ways you can add value to your business to the benefit of your customers and your bottom line.

IBM System Storage Specialty

The IBM System Storage Specialty Offering is designed to reward IBM Business Partners who make a significant investment in skills and certifications, customer references, and have the ability to successfully sell and deploy IBM Stor-

age solutions. The program is open to IBM resellers and solution providers who acquire products from IBM and authorized IBM Distributors and who meet the criteria outlined on the speciality Web site, and determined by the local channel partner channel organization. Storage has two levels of Specialty:

Specialty: Advanced demonstration of skills and market success consistent with strategy

Specialty Elite: Superior/market leadership demonstration of skills and market success consistent with strategy.

IBM is committed to continue to support and develop this specialty and to provide additional resources to our top partners



as we pursue an aggressive program of growth through this year and beyond. In addition, IBM will continue to simplify our business processes and align resources and benefits to those partners who actively demonstrate a willingness to invest in IBM focused skills and resources. By achieving the Storage specialty designation, Business Partners will be able to play a greater role in helping clients meet the challenges of rapidly growing data, reduced budget, and greater customer expectations.

The benefits of participating include:

- *Support resources—Accredited System Storage Specialty Business Partners will receive an assigned storage growth team representative to help them plan for future growth and proactively work with them to find the resources and support they need to extend their storage practice and drive additional revenue with IBM.*
- *Financial rewards—Additional incentives may be available for accredited System Storage Specialty Business Partners to invest in education, marketing, and offering development.*

- *Training benefits—Receive education and certification vouchers to assist in funding the education and training of your employees.*
- *Specialty Mark—Accredited Business Partners get to raise the visibility of their leadership and capabilities in the marketplace using the System Storage Specialty mark in their advertising and collateral. The mark is evidence that their firm has acquired the skills and experience in System Storage solutions and is recognized by IBM as an expert having met the specialty criteria.*
- *Additional benefits are provided for those Partners achieving the “Elite” level.*

You must apply for the specialty to participate, and your company must meet the specified criteria through eligible certifications and verified customer references, and achieve and maintain the minimum annual IBM System Storage revenue re-

MORE ON THE WEB

- [System Storage Specialty info on PartnerWorld](#)

quirements. Higher levels of certification and revenue contribution are required for Specialty Elite.

IBM Digital Content Marketing (Web Content Syndication)

IBM’s Digital Content Marketing benefit is an integrated suite of marketing tools—web content syndication, email marketing, and social automation—designed to help you generate leads while saving you time and money. Use one, two, or all three capabilities to create digital marketing campaigns to increase your visibility in the marketplace.

Ninety three percent of business-to-business purchases start with an online search. You can use Web site syndication to unlock more leads:

- *Help clients find you in the digital world*
- *Attract new buyers and new clients*
- *Put the power of digital marketing to work.*

MORE ON THE WEB

- [Digital Content Marketing info on PartnerWorld](#)
- [Digital Content Marketing registration](#)

Social Media Resources for IBM Business Partners

Social media is an important tool for businesses of all sizes. Whether you are already involved in social media or just getting interested, the “More on the Web” box provides some links that will be of interest to you. Join the IBM System Storage conversation!

MORE ON THE WEB

- [System Storage on Twitter](#)
- [System Storage on LinkedIn](#)
- [System Storage YouTube channel](#)
- [System Storage communities on IBM.com](#)
- [IBM PartnerWorld communities](#)
- [LinkedIn social network \(has an IBM Business Partner Group\)](#)

Getting Help

Everyone benefits when Business Partners can quickly find answers to questions that inevitably arise during the sales cycle. To this end, the IBM PartnerWorld program and your distributor stand ready to help you. Following are a few of the most useful resources the IBM PartnerWorld pro-

gram provides to Business Partners—with the goal of identifying, proposing, and ultimately installing solutions that will provide value for your clients.

Technical Support for Business Partners

Technical Sales Support from IBM provides Business Partners with extensive pre-sales support through the PartnerWorld program online via the Web and by voice. Voice support can be accessed via PartnerWorld Contact Services, the single point of entry to all key support organizations. PartnerWorld Contact Services provides access to Techline for hardware and software technical sales support, and to Competeline (Americas only) for win strategies and competitive information. CompeteCenter (Europe only) is accessed through the CompeteCenter Web

MORE ON THE WEB

- [Contact Techline](#)
- [Technical Sales Library](#)
- [PartnerWorld technical resources and support](#)

site. Systems Business Partners entitled through the PartnerWorld program have access to IBM System x and IBM System Storage solutions and selected major competitive platform support including:

- *Remote solution design assistance/review*
- *Technical marketing assistance*
- *Product and promotion information*
- *Configuration assistance*
- *Competitive product information*
- *Sales strategy information*
- *Solution assurance assistance.*

Follow the links in the “More on the Web” box to access Technical Sales Support online.

Systems Presales Advisor Tool

Follow the links in the “More on the Web” box to explore the IBM Presales Advisor tool. This is invaluable in helping you define specific solutions that include servers and storage products.

MORE ON THE WEB

- [Presales Advisor tool](#)
- [More sizing guides and configuration tools](#)

System Storage Quick Reference

In this chapter we explore the IBM System Storage hardware, software, and solutions you will be selling and offer some resources that will help you succeed



Flash Storage Appliances

The IBM flash portfolio, including the market leading IBM FlashSystem, will drive extreme performance to enable real-time business decisions, the efficiency around your data ecosystem, and the resiliency to make the data available and accessible. IBM offers the IBM FlashSystem family, richly featured software defined flash solutions, as well as flash optimized Elastic Storage software, XIV, Storwize V7000, and DS8000 storage to bring greater performance, IBM MicroLatency, efficiency, and resiliency to your infrastructure. In this section, we look at the IBM FlashSystem appliances.



FlashSystem 810 and 710 Specifications

Series	IBM FlashSystem 810	IBM FlashSystem 710
Model	9830-AE1	9830-AS1
Flash type	eMLC	SLC
Usable capacity (terabyte [TB]/tebibyte [TiB])	10.3 TB/9.4 TiB	5.2 TB/4.7 TiB
Raw maximum capacity (TB/TiB)	13.7 TB/12.5 TiB	6.9 TB/6.3 TiB
Incremental usable capacity upgrade (TB/TiB)	2.1 TB/1.9 TiB	1.0 TB/0.9 TiB
Minimum latency (write)	60 μ s	60 μ s
Minimum latency (read)	110 μ s	100 μ s

FlashSystem 810 and 710

IBM FlashSystem 810 and IBM FlashSystem 710 are designed to speed up the performance of critical enterprise applications, including data warehousing and OLAP applications, content delivery networks, video rendering and editing software, and 3D modeling and simulation applications. These systems deliver extreme performance per gigabyte so organizations can quickly uncover business insights from

IBM DB2, Oracle, and other database applications. In addition, FlashSystem 810 and FlashSystem 710 eliminate storage bottlenecks with MicroLatency that enables faster decision making.

Here are some quick FlashSystem 810 and 710 facts:

- Gain enterprise-class reliability with IBM Variable Stripe RAID technology—with-

out sacrificing performance or usable capacity

- Reduce time to decisions with faster applications, including data warehouses and online analytical processing (OLAP) databases
- Improve IT efficiency with IBM MicroLatency, high bandwidth, and extreme input/output operations per second (IOPS) performance in a small footprint

MORE ON THE WEB

- [FlashSystem 710 assets on PartnerWorld](#)
- [FlashSystem 810 assets on PartnerWorld](#)
- [FlashSystem 710 and 810 info on IBM.com](#)
- [FlashSystem 710 Competitive Insights](#)
- [FlashSystem 810 Competitive Insights](#)
- [FlashSystem 710 blog search](#)
- [FlashSystem 810 blog search](#)
- [FlashSystem 710 Twitter search](#)
- [FlashSystem 810 Twitter search](#)



- *Realize macro efficiencies with green storage designed for fast data access at low wattage*
- *Extract immediate value from your investment with quick time to deployment.*

FlashSystem 820 and 720

IBM FlashSystem 820 and IBM FlashSystem 720 are designed to speed up the performance of multiple enterprise-class applications, including OLTP and OLAP databases, virtual desktop infrastructures, technical computing applications, and cloud-scale infrastructures. These IBM

systems deliver extreme performance per gigabyte so organizations can quickly uncover business insights using traditional data analytics as well as new, big-data technologies. In addition, FlashSystem 820 and FlashSystem 720 eliminate storage bottlenecks with IBM MicroLatency—

that is, less than 100-microsecond access times—to enable faster decision making. With these low latencies, the storage disk layer can operate at speeds comparable to those of the CPUs, DRAM, networks, and buses in the I/O data path.

FlashSystem 820 and 720 Specifications

Series	FlashSystem 820	FlashSystem 820	FlashSystem 720	FlashSystem 720
Model	9831-AE2	9831-AE2	9831-AS2	9831-AS2
Flash type	eMLC	eMLC	SLC	SLC
	10 TB	20 TB	5 TB	10 TB
Usable capacity (terabyte [TB]/tebibyte [TiB])	12.4 TB/11.3 TiB	24.7 TB/22.5 TiB	6.2 TB/5.6 TiB	12.4 TB/11.3 TiB
Usable capacity RAID 5 (TB/TiB)	10.3 TB/9.4 TiB	20.6 TB/18.8 TiB	5.2 TB/4.7 TiB	10.3 TB/9.4 TiB
Raw maximum capacity (TB/TiB)	16.5 TB/15 TiB	33 TB/30 TiB	8.3 TB/7.5 TiB	16.5 TB/15 TiB
Minimum latency (write)	25 µs	25 µs	25 µs	25 µs
Minimum latency (read)	110 µs	110 µs	100 µs	100 µs

Here are some quick FlashSystem 820 and 720 facts:

- Reduce business interruptions without sacrificing performance or usable capacity with IBM Variable Stripe RAID technology
- Accelerate decision making across multiple applications, including online transactional processing (OLTP) and online analytical processing (OLAP) databases
- Boost IT efficiency and gain high bandwidth and extreme input/output operations per second (IOPS) performance in exceptionally dense, 1U storage systems—without compromising on latency

MORE ON THE WEB

- [FlashSystem 720 assets on PartnerWorld](#)
- [FlashSystem 820 assets on PartnerWorld](#)
- [FlashSystem 720 and 820 info on IBM.com](#)
- [FlashSystem 720 Competitive Insights](#)
- [FlashSystem 820 Competitive Insights](#)
- [FlashSystem 720 blog search](#)
- [FlashSystem 820 blog search](#)
- [FlashSystem 720 Twitter search](#)
- [FlashSystem 820 Twitter search](#)

- Realize macro efficiencies with green storage for data centers, designed for fast data access at low wattage
- Extract immediate value from your investment with quick time to deployment.

FlashSystem 840

IBM FlashSystem 840 is data center-optimized to strategically harness the value of stored data. By providing extreme performance for the most demanding applications, including online-transaction processing and analytics databases, virtual desktop infrastructures, technical-computing applications, and cloud environments, FlashSystem 840 delivers a competitive advantage for today's organizations. The IBM system reduces response times with MicroLatency—that is, less than 135-microsecond access times. It is this consistent low latency that enables FlashSystem to deliver application performance improvements.



MORE ON THE WEB

- [FlashSystem 840 assets on PartnerWorld](#)
- [FlashSystem 840 info on IBM.com](#)
- [FlashSystem 840 Competitive Insights](#)
- [FlashSystem 840 blog search](#)
- [FlashSystem 840 Twitter search](#)



IBM FlashSystem 840: Insight for competitive advantage (1:26)

Easy to deploy and manage, FlashSystem 840 delivers savings across the entire organization, from improved productivity of IT staff to energy efficiency within the data center. The efficiency benefits of FlashSystem 840 are a result of the high performance, high density, and low power consumption of the system's architecture. FlashSystem 840 is hardware accelerated, using energy-efficient IBM PowerPC processors, field-programmable gate arrays (FPGAs), and large arrays of

high-density enterprise multi-level cell (eMLC) flash.

Here are some quick FlashSystem 840 facts:

- *Supports more concurrent users, improves query response times, shortens batch processes, accelerates backups and lowers virtual desktop costs with all-flash storage*
- *Improves IT economics by improving server efficiency with IBM MicroLatency data accesses*
- *Reduces IT waste with extreme performance, high-density, energy-efficient flash storage*
- *Integrates with existing infrastructure with support for Fibre Channel, iSCSI, InfiniBand, and FCoE interfaces*
- *Expands capacity and performance incrementally to match changing requirements*
- *Improves availability with IBM Variable Stripe RAID, redundant and hot swappable components, and concurrent code load.*

Disk Storage

The IBM System Storage family includes a variety of disk storage products ranging from direct-attached disk drives to complete enterprise storage systems. In this section, we look at the product offerings in the disk storage arena.

Disk Storage Cross Reference by Workload Size

It is often a mistake to associate entry-level, midrange, and enterprise-class storage products with small, medium, and large size businesses respectively. For example, did you know that 30 percent of DS8000s are used by small and medium businesses? Did you know that 70 percent of SAN Volume Controllers are used by small and medium businesses?

Conversely, did you know that nearly every large enterprise uses entry-level and midrange storage products in addition to enterprise-class devices? For example, some large enterprises have branch offices or remote areas where smaller storage systems are more appropriate. Measurements often used to classify business size,

such as the number of employees or sales revenue, do not always correlate with the amount of information those businesses store. For this reason, product recommendations based on workloads often make more sense, though they still should be considered only as general guidelines. In this section, you will find a list of disk storage products organized by workload size (entry, mid-size, and enterprise) to help you find the best solution for your client.

Disk Storage for Entry-Level Workloads

Here is a list of disk storage products designed for businesses with entry-level workloads. Click on the links and you will jump to the section of this ebook that describes the product.

- [Storwize V3700](#)

Disk Storage for Mid-size Workloads

Here is a list of disk storage products designed for mid-size workloads. Click on the links and you will jump to the section of this ebook that describes the product.

- [Storwize V7000](#)
- [Storwize V7000 Unified](#)

- [DS5000](#)
- [DCS3700](#)
- [DCS3860](#)

Disk Storage for Enterprise Workloads

Here is a list of disk storage products designed for large enterprise workloads. Click on the links and you will jump to the section of this ebook that describes the product.

- [DS8000](#)
- [XIV Storage System](#)
- [SONAS](#)
- [IBM Real-time Compression](#)

DCS3700

The IBM System Storage DCS3700 storage system is ready to meet the challenge. Designed for applications with high-performance streaming data requirements, DCS3700 offers optimal space utilization, low power consumption, and high performance. By combining proven IBM storage controllers with up to 60 drives in just 4U of rack space, DCS3700 can reduce operational costs for capacity-intensive applications.



DCS3700 Specifications

Models	DCS3700 storage system DCS3700 with Performance Modules storage system DCS3700 expansion unit
RAID controller	Dual-active, intelligent controllers
Cache	Base DCS3700 storage system: 4 GB cache (2 GB per controller) with field or plant upgrades to 8 GB (4 GB per controller) DCS3700 with Performance Modules storage system: 12, 24 or 48 GB (6, 12, 24 GB per controller)
Drive interface	Two 6 Gbps SAS drive ports
Data protection levels	Single controller subsystem: One 6 Gb SAS drive expansion port Dual controller subsystem: Two 6 Gb SAS drive expansion ports
Software features	Base DCS3700 storage system: Thin provisioning with DDP, 128 storage partitions, 32 Enhanced FlashCopy images, host-attachment support for Microsoft Windows and Linux on x86/IBM POWER, IBM AIX, Mac OS and Solaris DCS3700 with Performance Modules: Thin provisioning with DDP, 512 storage partitions, 32 Enhanced FlashCopy images, host-attachment support for Windows and Linux on x86/POWER, AIX, Mac OS and Solaris
Maximum drives supported	Thin provisioning with DDP, 128 storage partitions, 32 Enhanced FlashCopy images, host-attachment support for Microsoft Windows and Linux on x86/IBM POWER, IBM AIX, HP-UX, Solaris and MAC OS
Maximum drives supported	Base DCS3700 storage system: Up to 180 drives per system with the attachment of two DCS3700 expansion units (60 drives per enclosure), 20 drives minimum drive quantity per enclosure* DCS3700 with Performance Modules: Up to 360 drives per system with the attachment of five DCS3700 expansion units (60 drives per enclosure), 20 drives minimum drive quantity per enclosure*
Fans & power supplies	Two each per enclosure
Rack support	Slim 4U, 19-inch rack mount enclosure
Management software	System Storage DS Storage Manager

DCS3700 provides a simple, efficient, and flexible approach to storage that is based on seven generations of design knowledge and firmware development. DCS3700 can act as a cost-effective, fully integrated complement to IBM System x, IBM BladeCenter, and IBM Power Systems servers for a wide variety of intensive computing environments.

Here are some quick DCS3700 facts:

- *Gain fast, highly available, dense storage capabilities at an affordable price*
- *Delivers simplified data protection management and automated recovery with Dynamic Disk Pooling (DDP)*
- *Improves backup and restores capabilities with enhanced IBM FlashCopy technology*
- *Achieves solid uptime, massive scalability, and green efficiencies*

MORE ON THE WEB

- [DCS3700 Express assets on PartnerWorld](#)
- [DCS3700 info on IBM.com](#)
- [DCS3700 Express Competitive Insights](#)
- [DCS3700 Express blog search](#)
- [DCS3700 Express Twitter search](#)

- *Helps optimize the flow of large, file-based data while retaining ease-of-data access*
- *Leverages multi-level data protection using a mix of replication features*
- *Ensures data integrity with support for the T10 Protection Information (T10-PI) standard.*

DCS3860

The IBM System Storage DCS3860 storage system delivers the performance and scalability organizations need to succeed

in this new era of big data. Designed for high-performance computing applications, DCS3860 supports up to 60 drives in just 4U of rack space—and it can scale up to 360 drives, including up to 24 solid-state drives (SSDs), with the attachment of five expansion units. This high-density system also helps make the most of today's IT budgets by increasing capacity while reducing the storage footprint, power consumption, and related operational costs.



DCS3860 Specifications

Models	DCS3860 storage system (181386H) DCS3860 storage system (181386C)
RAID controller	Dual-active, intelligent controllers
Cache per controller	12 GB
Drive interface	6 Gbps SAS
Data protection levels	RAID levels 0, 1, 3, 5, 6, 10 and Dynamic Disk Pooling
RAID levels	0, 1, 3, 5, 6, 10 and Dynamic Disk Pooling
Storage partitions	512
Maximum drives supported	360, including up to 24 SSD
Fans and power supplies	Two each per enclosure
Rack support	Slim 4U, 19-inch rack mount enclosure
Management software	System Storage DS Storage Manager

MORE ON THE WEB

- [DCS3860 Express assets on PartnerWorld](#)
- [DCS3860 info on IBM.com](#)
- [DCS3860 Express Competitive Insights](#)
- [DCS3860 Express blog search](#)
- [DCS3860 Express Twitter search](#)

DCS3860 provides a versatile, easy-to-use solution for storage area network (SAN) deployments. It works as a cost-effective, fully integrated complement to IBM System x and IBM BladeCenter servers for a wide variety of intensive computing environments.

Here are some quick DCS3800 facts:

- *Expands performance, flexibility, and operational efficiency with scalable, high-density storage systems*
- *Simplifies data protection management and automates recovery tasks with Dynamic Disk Pooling*
- *Helps ensure data integrity with support for the T10 Protection Information (T10 PI) standard.*

EXP2500 Express Expansion Unit

IBM has combined best-of-breed development with leading 6 Gbps host interface and drive technology in the IBM System Storage EXP2500 Express, a cost-effective, fully integrated complement to IBM System x and IBM BladeCenter serv-

ers. Offering substantial improvements at a price that will fit most budgets, the EXP2500 Express delivers superior price-to-performance ratios, functionality, scalability, and ease-of-use for the entry-level storage user.



EXP2500 Specifications

Model	1747-HC1 (PN 174712X)—System Storage EXP2512 Express Storage Enclosure; 1747-HC2 (PN 174724X)—System Storage EXP2524 Express Storage Enclosure
RAID controller	EXP2500 Express supports: Direct attachment to selected System x servers using: <ul style="list-style-type: none"> • IBM ServeRAID M5025 SAS/SATA Controller (part number 46M0830) • IBM ServeRAID M5120 SAS/SATA Controller (PN 81Y4478) Direct attachment to select BladeCenter servers using: <ul style="list-style-type: none"> • BladeCenter SAS Connectivity Module (part number 39Y9195) • IBM ServeRAID MR10ie (CIOv) Controller (part number 46C7167)
Drive interface	SAS
Supported drives	EXP2512: 300 GB, 450 GB and 600 GB 15k rpm 6 Gbps SAS 3.5-inch HDD 1 TB, 2 TB, 3 TB and 4 TB 7.2k rpm 6 Gbps SAS nearline 3.5-inch HDD* EXP2524: 146 GB and 300 GB 15k rpm 6 Gbps SAS 2.5-inch HDD 600 GB, 900 GB and 1.2 TB 10k rpm 6 Gbps SAS 2.5-inch HDD 1 TB 7.2k rpm 6 Gbps SAS nearline 2.5-inch HDD 200 GB and 400 GB 6 Gbps SAS 2.5-inch SSD
RAID levels	Supports RAID levels supported by ServeRAID Controllers: Standard 0, 1, 10, 5, 50; Optional 6, 60
Maximum drives supported	12 in the EXP2512 enclosure 24 in the EXP2524 enclosure
Fans & power supplies	Two hot-swappable 515 watt (115–230 V ac) power supplies
Rack support	19" industry-standard rack

MORE ON THE WEB

- [EXP2500 assets on PartnerWorld](#)
- [EXP2500 info on IBM.com](#)

Easy to manage, flexible, and extendable, IBM System Storage EXP2500 Express is designed to work as a direct-attached external disk storage solution for IBM System x and IBM BladeCenter servers using ServeRAID controllers. EXP2500 Express helps organizations enhance capacity seamlessly to address their current and future data needs.

EXP2500 Express is a performance-oriented SAS platform designed to increase both bandwidth and throughput with next-generation storage technology. It also includes support for IPv6, meeting the latest government requirements to help ensure compliance.

Here are some quick EXP2500 facts:

- *Based on 6 Gbps SAS interface connectivity, IBM System Storage EXP2500 Express provides an affordable external disk solution for direct attachment to IBM*

System x and IBM BladeCenter servers via ServeRAID controllers

- *Provides flexible support for high-performance and nearline disk drives, as well as solid state drives (SSDs)*
- *Improves scalability with a high-density 2U enclosure that supports up to 12 3.5-inch disk drives on IBM System Storage EXP2512 Express and 24 2.5-inch disk drives on IBM System Storage EXP2524 Express*
- *Delivers high availability and reliability with dual-AC power supplies and fans.*

DS5000 series

The IBM System Storage DS5000 series is designed to meet the demanding open-systems requirements of today—and tomorrow—while establishing a new standard for life cycle longevity. Building on many decades of design expertise, the DS5000 storage system's architecture delivers industry-leading performance, real reliability, multidimensional scalability, and unprecedented investment protection. DS5000 supports IBM AIX and IBM Power Systems T10-PI Data Integrity Initiative.

MORE ON THE WEB

- [DS5000 Express assets on PartnerWorld](#)
- [DS5000 info on IBM.com](#)
- [DS5000 Express Competitive Insights](#)
- [DS5000 blog search](#)
- [DS5000 Twitter search](#)

DS5000 storage systems are equally adept at supporting transactional applications such as databases and online transaction processing (OLTP), throughput-intensive applications such as high-performance computing (HPC) and rich media, and concurrent workloads for consolidation and virtualization. With relentless performance and superior reliability and availability, DS5000 series storage systems can support the most demanding service level agreements (SLAs) for the most common operating systems, including Microsoft Windows, UNIX, Linux, and Apple Macintosh. When requirements change, you can add or replace host interfaces, grow capacity, add cache and reconfigure the system on the



DS5000 Specifications

Model	DS5100 -1818-51A, DS5300 -1818-53A
RAID Controller	Dual active
Cache	Up to a total of 64 GB cache <ul style="list-style-type: none"> Options include 4 GB, 8 GB, 16 GB, and 32 GB of cache per controller Dedicated cache mirroring channels Persistent cache backup in the event of a power outage Field-upgradable
Host interface	DS5100: <ul style="list-style-type: none"> 8 × 4/8 Gbps Fibre Channel host interface cards (4 Gbps cards auto-negotiate to 1 Gbps, 2 Gbps and 4 Gbps speeds; 8 Gbps cards auto-negotiate 2 Gbps, 4 Gbps and 8 Gbps speeds) 1 Gbps iSCSI—dual ported (sixteen total host ports) 10 Gbps iSCSI—dual ported (eight total host ports) DS5300: <ul style="list-style-type: none"> Up to 16 × 4/8 Gbps host interface cards (4 Gbps cards auto-negotiate to 1 Gbps, 2 Gbps and 4 Gbps speeds; 8 Gbps cards auto-negotiate 2 Gbps, 4 Gbps and 8 Gbps speeds) 1 Gbps iSCSI—dual ported (16 total host ports) 10 Gbps iSCSI—dual ported (8 total host ports)
Drive interface	Sixteen 4 Gbps Fibre Channel drive interfaces support up to: <ul style="list-style-type: none"> 28 EXP5000 drive enclosures or 8 EXP5060 drive enclosures
Supported drives with EXP5060	SATA: 1 TB and 2 TB 7.2k rpm FC-SAS nearline: 3 TB 7.2k rpm
RAID levels	RAID 0, 1, 3, 5, 6, and 10
Storage partitions	8, 16, 32, 128, 256, or 512 storage partitions
Maximum drives supported	448 drives maximum with use of 28 EXP5000 drive enclosures; 480 drives with EXP5060 drive enclosures

fly—ensuring that it will keep pace with your growing organization.

Here are some quick DS5000 facts:

- Provides balanced performance—up to 700,000 input/output operations per second (IOPS) and 6,400 MB/s—that is

well-suited for virtualization and consolidation

- Scales up to 448 drives (1.34 PB) using the EXP5000 enclosure and up to 480 drives (1.44 PB) of high-density storage with the EXP5060 enclosure

- Allows for intermixing drive types (Fibre Channel, FC-SAS, FC-SAS nearline, self-encrypting drives [SEDs], SATA and solid-state drives [SSDs]) and host interfaces (Fibre Channel and iSCSI) for investment protection and cost-effective tiered storage
- Supports high availability with hot-swappable components and nondisruptive firmware upgrades.

EXP5000 Drive Enclosure

The EXP5000 drive enclosure is more than “just a bunch of disks.” The enclosure is designed to optimize performance, availability, and serviceability by offering:

- 4 Gbps Fibre Channel interfaces for connectivity
- Up to 16 dual-ported Fibre Channel, FC-SAS, FC-SAS nearline, SED, SSDs, or SATA disk drives that are intermixable in the same enclosure
- An environmental service module (ESM)-embedded “loop switch”
- Redundant 4 Gbps Fibre Channel drive loops to ensure complete accessibility to all drives in the event of a loop or cable failure

MORE ON THE WEB

- [EXP5000 Express assets on PartnerWorld](#)

- *Redundant power supplies, cooling fans, and ESMs*
- *A 24x7 four-hour response warranty.*

All primary components are hot-swappable and can be easily accessed, removed, or replaced.

Storwize V3700

IBM Storwize V3700, the entry-level system in the IBM Storwize family, is an efficient, easy-to-use system designed to complement virtual server environments while delivering flexibility and innovative storage functions.

To help address block storage requirements, Storwize V3700 is designed to provide small and mid-size organizations with the ability to consolidate and share data at an affordable price, while leveraging advanced software capabilities usually found in more expensive systems. Providing up to 240 drives of capacity, Storwize



Storwize V3700 Specifications

Host interface	1 Gbps iSCSI and 6 Gbps SAS (optional 8 Gbps Fibre Channel, 1 Gbps iSCSI, 6 Gbps SAS or 10 Gbps iSCSI/Fibre Channel over Ethernet)
User interface	Storwize V3700 graphical user interface
Single/dual controller	Dual controller
Cache per controller	4 GB upgradable to 8 GB
Drive type	Dual-port, hot-swappable 6 Gb SAS disk drives
Supported drives	Small form-factor (SFF) 2.5-inch disk drives: 146 GB, 300 GB at 15k rpm; 300 GB, 600 GB, 900 GB and 1.2 TB at 10k rpm; 500 GB, 1 TB at 7.2k rpm SAS nearline Large form-factor (LFF) 3.5-inch disk drives: 2 TB, 3 TB, and 4 TB at 7.2k rpm; 900 GB and 1.2 TB at 10k rpm; 300 GB at 15k rpm SSD drives: 200 GB and 400 GB
RAID levels	RAID 0, 1, 5, 6, 10
Maximum drives supported	SFF enclosure: 24 x 2.5" drives LFF enclosure: 12 x 3.5" drives
Fans & power supplies	Fully redundant, hot-swappable
Rack support	Standard 19" rack-mount enclosure
Management software	Storwize V3700 machine code
Advanced functions included with each system	Internal virtualization, thin provisioning, one-way data migration and FlashCopy (up to 64 targets)
Optional licensed functions	FlashCopy upgrade (up to 2,040 targets), Easy Tier, Remote Mirror and turbo performance

V3700 delivers proven ease of management, functionality, and interoperability.

Here are some quick Storwize V3700 facts:

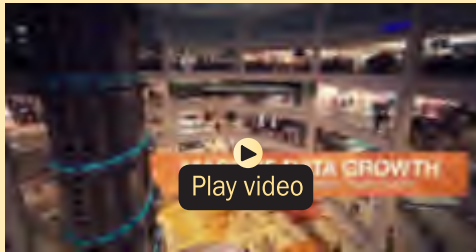
- *Easily manages and deploys storage using a breakthrough graphical user inter-*

face

- *Gain efficiency with internal storage virtualization and high-performance thin provisioning*
- *Provides continuous access to data with*

MORE ON THE WEB

- [Storwize V3700 assets on PartnerWorld](#)
- [Storwize V3700 info on IBM.com](#)
- [Storwize V3700 Competitive Insights](#)
- [Storwize V3700 blog search](#)
- [Storwize V3700 Twitter search](#)



IBM Storwize V3700 overview (2:30)

integrated nondisruptive migration

- *Improves network utilization for remote mirroring with innovative replication technology*
- *Optimizes costs for mixed workloads, with up to three times performance improvement with only five percent flash storage capacity using IBM Easy Tier1*
- *Complies with Network Equipment Building System (NEBS) Level 3 and European Telecommunication Standards Institute (ETSI) specifications.*

Storwize V5000

IBM Storwize V5000 is a highly flexible, easy to use, virtualized storage system that enables mid-size organizations to meet the challenges of rapid data growth and limited IT budgets. As an intermediate Storwize family offering, Storwize V5000 enables organizations to consolidate and provide new capabilities to their existing infrastructures. With flexible licensing options, Storwize V5000 makes it easy to deploy complementary solutions, such as IBM ProtecTIER.

Here are some quick Storwize V5000 facts:

- *Simplifies management with industry-leading graphical user interface*
- *Easily customizes your storage system with flexible software options*
- *Boosts performance up to three times using only five percent flash storage with optional IBM Easy Tier technology*
- *Consolidates and provides IBM Storwize V5000 capabilities to existing storage infrastructures using optional external virtualization*

- *Improves network utilization for remote mirroring with innovative replication technology.*

MORE ON THE WEB

- [Storwize V5000 assets on PartnerWorld](#)
- [Storwize V5000 info on IBM.com](#)
- [Storwize V5000 Competitive Insights](#)
- [Storwize V5000 blog search](#)
- [Storwize V5000 Twitter search](#)



IBM Storwize V5000 overview (6:27)



Storwize V5000 Specifications

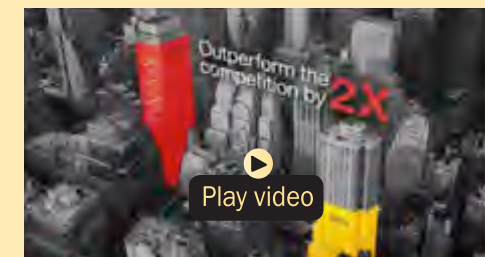
Host interface	1 Gb iSCSI, 6 Gb SAS, and 8 Gb Fibre Channel or 10 Gb iSCSI/FCoE
User interface	Graphical User Interface (GUI)
Single/dual controller	Dual
Maximum cache	32 GB (with two-way clustered systems)
Drive type	Dual-port, hot-swappable, 6 Gb SAS disk drives
Supported drives	<p>Small form factor 2.5-inch disk drives:</p> <ul style="list-style-type: none"> • 146 GB, 300 GB @ 15k rpm • 600 GB, 900 GB, 1.2 TB @ 10k rpm • 1 TB @ 7.2k rpm SAS nearline <p>Large form factor 3.5-inch disk drives:</p> <ul style="list-style-type: none"> • 300 GB @ 15k rpm, SAS 2.5-inch • 900 GB, 1.2 TB @ 10k rpm, SAS 2.5-inch • 2 TB, 3 TB, 4 TB @ 7.2k rpm <p>SSD 2.5-inch drives:</p> <ul style="list-style-type: none"> • 200 GB, 400 GB, 800 GB
RAID levels	RAID 0, 1, 5, 6, 10
Maximum drives supported	<p>Up to six Storwize V5000 expansion enclosures (maximum of 168 drives per system and 336 drives in two-way clustered systems):</p> <p>Small form factor enclosure: 24 x 2.5-inch drives</p> <p>Large form factor enclosure: 12 x 3.5-inch drives</p>
Fans & power supplies	Fully redundant, hot-swappable
Rack support	Standard 19-inch rack-mount enclosure
Management software	IBM Storwize family software for Storwize V5000
Advanced features included with each system	Embedded GUI, Dual-system clustering, Virtualization of internal storage, Thin provisioning, One-way data migration, Interoperability with most major server platforms and operating systems
Optional advanced functions	Easy Tier, External virtualization, FlashCopy, Remote mirroring

Storwize V7000 and Storwize V7000 Unified Disk System

IBM Storwize V7000 Unified and IBM Storwize V7000 are virtualized, enterprise-class storage systems that provide the foundation for implementing an effective storage infrastructure and transforming the economics of data storage. Designed to complement virtual server environments, these modular storage systems deliver the flexibility and responsiveness required for changing business needs.

MORE ON THE WEB

- [Storwize V7000 assets on PartnerWorld](#)
- [Storwize V7000 info on IBM.com](#)
- [Storwize V7000 Competitive Insights](#)
- [Storwize V7000 blog search](#)
- [Storwize V7000 Twitter search](#)



IBM Storwize V7000 overview (1:48)



Storwize V7000 specifications

Host interface	SAN-attached 8 Gbps Fiber Channel (FC) , 1 Gbps iSCSI and optional 10 Gbps iSCSI/FCoE, NAS-attached 1 Gbps and 10 Gbps Ethernet
User interface	Graphical User Interface (GUI)
Supported drives	3.5" disk drives: • 2 TB, 3 TB, 4 TB 7.2k Nearline SAS disk 2.5" disk drives: • 146 GB, 300 GB 15k SAS disk • 300 GB, 600 GB, 900 GB 1.2 TB 10k SAS disk • 200 GB, 400 GB E-MLC SSD • 1 TB 7.2k Nearline SAS disk
RAID levels	RAID 0, 1, 5, 6, 10
Maximum drives supported	240 per control enclosure; 960 per clustered system
Fans & power supplies	Fully redundant, hot-swappable
Rack support	19" industry standard
Management software	IBM Storwize V7000 and Storwize V7000 Unified Software
Cache per controller/ control enclosure/clustered system	8 GB/16 GB/64 GB
Advanced features included with each system	System Storage Easy Tier, FlashCopy, thin provisioning, Active Cloud Engine (Storwize V7000 Unified only)

In fact, Storwize V7000 Unified and Storwize V7000 provide the latest storage technologies for unlocking the business value of stored data, including virtualization and Real-time Compression. In addition, the systems include a powerful new hardware platform that can support the massive volumes of data created by today's demanding cloud and analytics

applications. They are designed to deliver outstanding efficiency, ease of use, and dependability for organizations of all sizes.

Here are some quick Storwize V7000 facts:

- *Meets changing business needs with virtualized, enterprise-class, flash-optimized modular storage*

- *Transforms the economics of data storage with hardware-accelerated data compression*
- *Leverages integrated support for file and block data to consolidate workloads*
- *Optimizes performance with fully automated storage tiering*
- *Improves network utilization for remote mirroring with innovative replication technology.*
- *Deploys storage quickly with easy-to-use management tools and built-in support for leading software platforms.*

DS8000 series (DS8870)

As the latest model in the IBM DS8000 series, DS8870 can bring simplicity to your data architecture with self-optimizing performance for both random and sequential application workloads for an extensive variety of distributed server platforms and the mainframe. And with the agility and automation to manage all these workloads simultaneously, DS8870 can greatly reduce the challenge of managing your increasingly complex storage environment as your business requirements change.



DS8870 Specifications

Models	DS8870 (961, 96E)
Shared SMP processor configuration	IBM POWER7/POWER7+ dual 2-core, 4-core, 8-core or 16-core*
Other major processors	IBM PowerPC, ASICs
Processor memory for cache and non-volatile storage (min./max.)	16 GB/1024 GB
Host adapter interfaces (min./max.)	2/16
Host ports (min./max.)	8/128
Drive interface	6 Gbps point-to-point switched SAS-2 connection to an 8 Gbps Fibre Channel backbone
Number of disk drives (min./max.)	8/1,536 (2.5-inch drives) 8/768 (3.5-inch drives)
Drive adapters	Up to 16 4-port, 8 Gbps Fibre Channel
Maximum physical storage capacity*	3,072 TB
RAID levels	5, 6, 10

To support your most demanding, business-critical applications, DS8870 combines rock-solid resiliency and intelligent flash performance to deliver consistent sub-millisecond application response

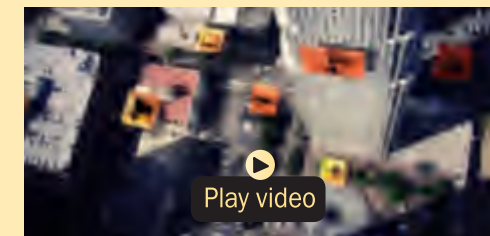
times. The ability to select from all-flash, hybrid-flash, or traditional disk configuration options provides the confidence needed to support the dynamic applications that sit at the heart of your business.

Here are some quick DS8870 Storage facts:

- Accelerates database performance for business-critical applications with next-generation, high-performance flash enclosures
- Optimizes performance with all-flash and hybrid-flash systems for faster transaction processing and real-time operational analytics
- Delivers extreme data availability with full hardware redundancy and advanced business-continuity

MORE ON THE WEB

- [DS8000 Sales Kit on PartnerWorld](#)
- [DS8000 info on IBM.com](#)
- [DS8000 Competitive Insights](#)
- [DS8000 blog search](#)
- [DS8000 Twitter search](#)



DS8870 video:
Smarter storage for enterprise systems

- Maximize performance and costs with new drive options, IBM Easy Tier, and other self-optimizing features
- Consolidate storage with high scalability, automated quality-of-service management, self-tuning performance, automated tiering, and support for many platforms and application workloads.

XIV Storage System

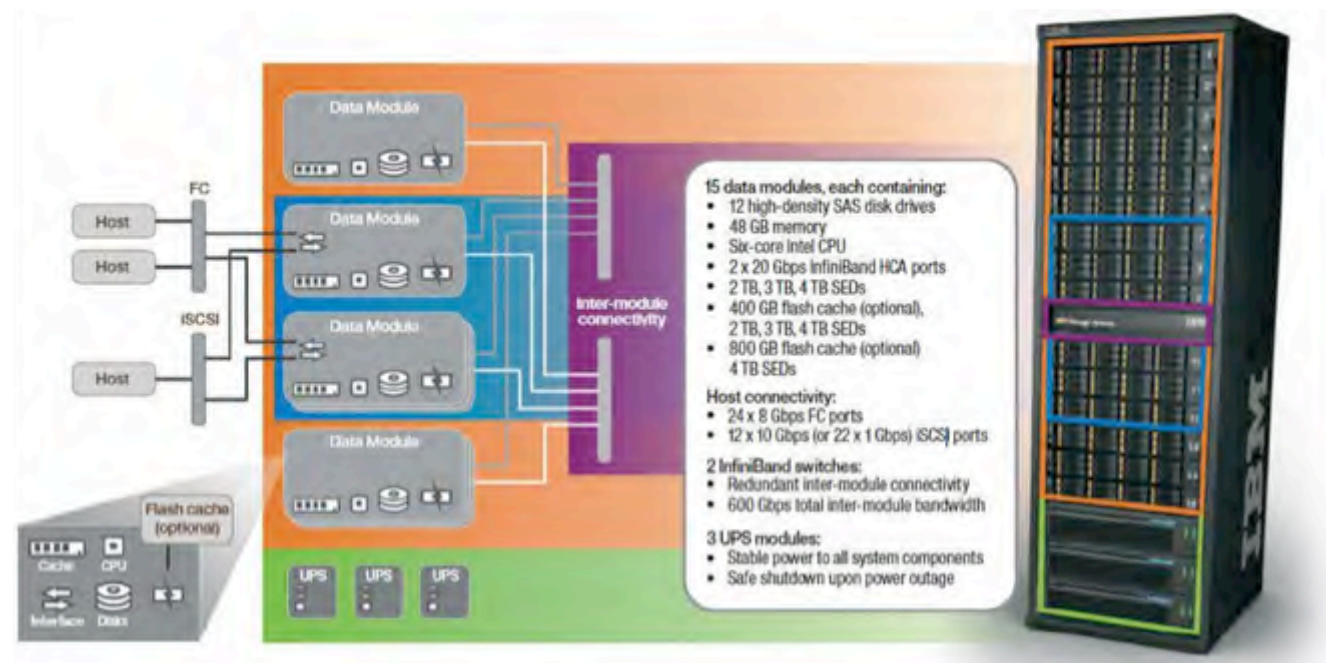
IBM XIV Storage System is high-end flash-optimized data storage designed to deliver simplicity, resiliency, and predictability that are ideal for cloud and big-data analytics environments to support their need for high performance, high availability, operational flexibility, and security. Built to simplify storage, XIV Storage Sys-

tem is enabling thousands of organizations to take control of their storage and gain business insights from their data. XIV storage is deployed in diverse industries worldwide, including financial, health-care, telecommunications, managed services, energy, and manufacturing. It integrates easily with virtualization, email, database, analytics, data protection, and other solutions from leading providers such as VMware, Microsoft, SAP, Oracle Solaris, SAS, and Symantec.

Designed for consistent, enterprise-level performance and five-nines availability, XIV storage handles static and dynamic workloads with ease. Never compromising performance for reliability, the XIV grid architecture delivers massive parallelism—resulting in uniform allocation of system resources at all times. XIV storage sets a new standard for ease of use by automating most tasks and providing an extraordinarily intuitive user interface. IBM XIV Mobile Dashboard can make life

MORE ON THE WEB

- [XIV assets on PartnerWorld](#)
- [XIV info on IBM.com](#)
- [XIV Competitive Insights](#)
- [XIV configuration and functionality table](#)
- [XIV blog search](#)
- [XIV Twitter search](#)



that much easier with anytime, anywhere XIV monitoring from mobile devices.

Here are some quick XIV Storage System highlights:

- *Delivers consistent, tuning-free high performance and ease of use via a grid-based architecture*
- *Scales cloud storage capacity and performance linearly and manages up to 144 frames using IBM Hyper-Scale*
- *Enables elasticity, open-standards support and mixed-workload affinity for optimized compute clouds and virtualized environments*
- *Offers business continuity with three-site mirroring, full redundancy, self-healing and unprecedented rebuild speed*
- *Provides compelling data economics through superb price-performance, simplicity, all-inclusive software licensing, and flexible acquisition options ideal for service providers.*

SAN Volume Controller

An industry-leading storage virtualization system, IBM SAN Volume Controller (SVC) Data Platform has been delivering availability, reliability, flexibility, and efficiency for more than 10 years. Its innovative data virtualization capabilities provide the foundation for the entire IBM Storwize family.

SVC Data Platform provides the latest storage technologies for unlocking the business value of stored data, including virtualization and Real-time Compression. In addition, the system includes the new

SVC Data Engine to help support the massive volumes of data created by today's demanding enterprise applications. SVC Data Platform is designed to deliver unprecedented levels of efficiency, ease of use, and dependability for organizations of all sizes.

Here are some quick SAN Volume Controller facts:

- *Enhances data storage functions, economics, and flexibility with sophisticated virtualization*
- *Leverages a new data engine with accelerated data compression to help improve efficiency*



MORE ON THE WEB

- [SAN Volume Controller Sales Kit on PartnerWorld](#)
- [SAN Volume Controller info on IBM.com](#)
- [SAN Volume Controller Competitive Insights](#)
- [SAN Volume Controller blog search](#)
- [SAN Volume Controller Twitter search](#)

- *Stores up to five times more active primary data using IBM Real-time Compression*
- *Moves data among virtualized storage systems without disruptions*
- *Optimizes tiered storage—including flash storage—automatically with IBM Easy Tier*
- *Improves network utilization for remote mirroring with innovative replication technology*
- *Implements multi-site configurations for high availability and data mobility between data centers.*

Scale Out Network Attached Storage (SONAS)

IBM Scale Out Network Attached Storage (SONAS) is designed to embrace and deliver cloud storage in the petabyte age. SONAS can meet today's storage challenges with quick and cost-effective IT-enabled business enhancements designed to grow with unprecedented scale.

SONAS can also deliver storage services that make the supporting technology almost invisible. It allows applications and services to be uncoupled from the underlying infrastructure, enabling businesses to adjust to change quickly. As a result, SONAS can easily integrate with your organization's strategies to develop a more dynamic enterprise.



SONAS specifications

Host interface	CIFS, NFS, FTP, HTTP
Management software	SONAS software Optional Tivoli Storage Manager client (requires license) Optional Tivoli Productivity Center 5.1 (requires license)
Supported drives	SAS: 300 GB (15k rpm) Nearline SAS: 2 TB and 3 TB (72k rpm) SSD: 200 GB and 400 GB SAS 2.5-inch
RAID levels	RAID 6
Maximum drives supported	7200

MORE ON THE WEB

- [SONAS assets on PartnerWorld](#)
- [SONAS info on IBM.com](#)
- [SONAS Competitive Insights](#)
- [SONAS blog search](#)
- [SONAS Twitter search](#)

Organizations with fast-growing, rapidly multiplying file systems are beginning to discover that traditional network-attached storage (NAS)—even clustered NAS—has serious problems. Managing and supporting storage as it scales to millions and billions of active files is extremely complex. When such massive numbers of files require separate file systems connected with many separate servers, operational complexity grows exponentially. Consolidating tens, even hundreds, of these file servers into high-end scale-out NAS becomes a necessity. This is where SONAS helps. SONAS is designed to scale out to store millions to billions of active files in a single namespace. SONAS offers operational efficiency and administrative

savings, combining massive scalability with automated file management to quickly deliver information around the world.

Here are some quick IBM SONAS facts:

- *Accommodates capacity growth with scale-out performance for both random-access and streaming file workloads*
- *Enables ubiquitous access to files between SONAS and IBM Storwize V7000 systems across the globe quickly and cost effectively with IBM Active Cloud Engine, leveraging its disaster recovery and business continuity capacity*
- *Enables cloud storage via seamless integration with IBM SmartCloud Storage Access*
- *Lowers TCO by up to 40 percent with automated lifecycle management and migration to tape*
- *Provides gateway option for IBM XIV, IBM System Storage DCS3700, and Storwize V7000 disk systems*
- *Delivers high performance with a new performance module and twice the drive support with up to 360 drives.*

Real-time Compression Appliances STN7800

IBM Real-time Compression Appliance STN7800 increases the effective capacity of the existing storage infrastructure to help users meet the demands of rapid data growth while also enhancing storage performance and utilization. The IBM Real-time Compression Appliance applies patented IBM real-time data compression techniques to primary and existing storage, delivering optimization and savings throughout the entire storage lifecycle. The result is unprecedented cost savings and return on investment, along with operational and environmental efficiencies.

MORE ON THE WEB

- [STN7800 assets on PartnerWorld](#)
- [STN7800 info on IBM.com](#)
- [STN7800 Competitive Insights](#)
- [STN7800 blog search](#)
- [STN7800 Twitter search](#)



STN7800 Specifications

Model	2452-780
1 GbE ports	16 or 8 with mixed 1 GbE (copper) and 10 GbE (optical) option
10 GbE ports	8 or 4 with mixed 1 GbE (copper) and 10 GbE (optical) option
ECC memory (GB)	96 GB
Processor	2 Intel Xeon CPU E5-2680 @ 2.70 GHz 8-core processors
Host interface	TCP/IP or UDP
Storage interface	NAS: SMB v1 and SMB v2, Microsoft CIFS and UNIX NFS v3
Connectivity	10 GbE (optical), 1 GbE (copper), or mixed 10 GbE (optical) and 1 GbE (copper) options
Hot swap components	Power supplies, fan modules, disk
Rack support	2U form factor
Management software	<ul style="list-style-type: none"> • Intuitive web GUI • Command line interface (CLI) for management tasks • Comprehensive SNMP MIB provides statistics information and alerts • Active Directory integration supports external Syslog server for sending notifications and audit information • Simple per-appliance software licensing
High Availability	<ul style="list-style-type: none"> • Transparent path failover, when deployed in pairs • Predictive failure analysis for hardware components • Link Aggregation (IEEE 802.3ad) • Ethernet Trunking (Cisco EtherChannel)

The patented Random Access Compression Engine (RACE) technology used in the IBM Real-time Compression Appliance is based on proven Lempel-Ziv data compression algorithms. RACE enables the appliance to deliver real-time, random-access, deterministic and lossless data compression, maintaining reliable and consistent performance and data integrity.

Here are some quick STN6800 facts:

- *Shrinks primary network-attached storage (NAS) data in real time, without performance degradation*
- *Deploys and administers quickly and easily*
- *Supports 10 GbE and 1 GbE NAS ports for maximum flexibility*
- *Leverages automated failover option for high-availability environments.*

Tape Storage

Server systems are woven deeply into today's business processes and are at the core of day-to-day operations. This information is thus a valuable corporate asset that must be protected. Tape storage provides a cost-effective and efficient means of backing up and archiving the information held on disk storage. Tape storage plays a vital role in reducing storage costs, maintaining data availability in the event of hardware failures, restoring data files accidentally or maliciously erased, restoring operations after a disaster, and so forth.

IBM offers tape storage, backup and recovery solutions for data protection and retention. IBM invented the concept of magnetic tape storage back in 1952. Since then, IBM has delivered many innovations in tape storage and that innovation continues today.

In this section, we examine IBM's tape storage offerings.

MORE ON THE WEB

- [All tape offerings on IBM.com](#)

Tape Storage Cross Reference by Workload Size

It is often a mistake to associate entry-level, midrange, and enterprise-class storage products with small, medium, and large size businesses, respectively. The amount of data stored often does not correlate with the number of employees or revenue metrics often cited in determining size. For this reason, recommendations on products based on actual workloads often makes more sense, though still should be considered only a general guideline. In this section, you will find a list of tape storage products organized by workload size (entry, mid-size, and enterprise) to help you find the best solution for your client.

Tape Storage for Entry-Level Workloads

Here is a list of tape storage products designed for entry-level workloads. Click on

the links and you will jump to the section of this ebook that describes the product.

- [TS2240 Express](#)
- [TS2250 Express](#)
- [TS2260 Express](#)
- [TS2340 Express](#)
- [TS2350 Express](#)
- [TS2360 Express](#)
- [TS2900 Tape Autoloader](#)
- [TS3100 Express](#)
- [TS3200 Express](#)
- [TS7620 ProtecTIER](#)
- [Linear Tape File System](#)

Tape Storage for Mid-size Workloads

Here is a list of tape storage products designed for mid-size workloads. Click on the links and you will jump to the section of this ebook that describes the product (you can click on the back arrow to jump back to this page).

- [TS3100 Library](#)
- [TS3200 Library](#)
- [TS3310 Library](#)
- [TS3500 Library](#)

- [TS4500 Library](#)
- [TS7650 ProtecTIER](#)
- [Crossroads ReadVerify Appliance \(RVA\)](#)
- [Linear Tape File System](#)
- [7226 Enclosure](#)

Tape Storage for Enterprise Workloads

Here is a list of tape storage products designed for large enterprise workloads. Click on the links and you will jump to the section of this ebook that describes the product (you can click on the back arrow to jump back to this page).

- [TS1120 Tape Drive](#)
- [TS1130 Tape Drive](#)
- [TS1140 Tape Drive](#)
- [TS3500 Library](#)
- [TS4500 Library](#)
- [TS7700 Virtualization Engine](#)
- [Crossroads ReadVerify Appliance \(RVA\)](#)
- [Linear Tape File System](#)

Crossroads ReadVerify Appliance (RVA)

Crossroads ReadVerify Appliance provides full visibility into the utilization, performance, and health of the tape drives and media in a tape library environment. The detailed insight provided by ReadVerify Appliance can lead to operational improvements by helping to complete backup jobs on time, minimize purchases of unnecessary resources, and prevent premature wear of overused resources. ReadVerify Appliance collects data directly from the tape drives and library during data transactions, without impacting the storage applications.

ReadVerify Appliance also supports two advanced features. ArchiveVerify (optional feature) offers the fully automated ability to verify readability of long-idle or suspicious media, providing an audit trail for regulatory compliance policies. The Read Verify Advanced Reporting integrated feature gives customers the dynamic ability to generate fully customized, multivariable reports for identifying hidden patterns and relationships between the different components of their tape environment.



Here are some quick RVA facts:

- *Helps reduce data risk by monitoring library activity and providing alerts on the health and integrity of the tape drives and media*
- *Optimizes tape resources by providing visibility into the root cause of incomplete backups, unbalanced drive usage, and low performing assets*
- *Helps meet regulatory compliance and reduce long-term data risk through fully automated, policy-driven validation of tape media readability (requires Archive-Verify optional feature)*
- *Provides dynamic, multivariable user-managed reporting for understanding complex system interactions and projecting future budget and system needs.*

MORE ON THE WEB

- [Crossroads ReadVerify Appliance assets on PartnerWorld](#)
- [Crossroads ReadVerify Appliance info on IBM.com](#)
- [Crossroads ReadVerify Competitive Insights](#)
- [Crossroads ReadVerify blog search](#)
- [Crossroads ReadVerify Appliance Twitter search](#)

Linear Tape File System Single Drive Edition

The IBM Linear Tape File System (LTFS) provides direct, intuitive, and graphical access to data stored on Linear Tape-Open (LTO) Ultrium 6 or 5 tape cartridges, as well as IBM 3592 tape cartridges. It eliminates the need for additional tape management and software to access data.



LTFS is a significant step in moving tape storage away from its reputation as complex and difficult to use. Unlike disk storage, tape has previously required device-specific software to read, write, and manage data stored on its cartridges in libraries. But LTFS is the first file system that works in conjunction with LTO Ultrium tape technology to set a new standard for ease of use and portability for open-systems tape storage. Users can run any application designed for disk files against tape data without concern for the fact that the data is physically stored on tape.

Here are some quick LTFS Single Drive Edition facts:

- *Access and manage files on tape as easily as if they were on hard disk*

MORE ON THE WEB

- [LTFS Single Drive Edition specifications](#)
- [LTFS Single Drive Edition assets on PartnerWorld](#)
- [LTFS info on IBM.com](#)
- [LTFS Competitive Insights](#)
- [LTFS blog search](#)
- [LTFS Twitter search](#)

- *Drag and drop files to and from tape without requiring device-specific software*
- *Share file data across platforms, similar to using a USB drive.*

Linear Tape File System Storage Manager

The IBM Linear Tape File System (LTFS) format provides direct, intuitive, and graphical access to data stored in IBM tape drives and libraries using Linear Tape-Open (LTO) Ultrium 6 or 5 tape cartridges, as well as IBM 3592 tape cartridges in libraries with IBM TS1140 tape drives. It eliminates the need for additional tape management and software to access data.

With IBM Linear Tape File System Storage Manager (LTFS SM) software, accessing data stored on an IBM tape cartridge—instead of on disk—is transparent. LTFS SM software integrates with IBM Linear Tape File System Library Edition (LTFS LE) to help users better manage and monitor archive and restore files. It enables high performance and reliable access across the storage infrastructure. This allows

MORE ON THE WEB

- [LTFS Storage Manager specifications](#)
- [LTFS Storage Manager assets on PartnerWorld](#)
- [LTFS info on IBM.com](#)
- [LTFS Competitive Insights](#)
- [LTFS blog search](#)
- [LTFS Twitter search](#)

data centers to add extensive capacity with lower media, floor space, and power costs. And with policy-based migration, archive capacity can be expanded without impacting data availability.

Here are some quick LTFS Storage Manager facts:

- *Access and manage files in IBM Linear Tape File System (LTFS) tape libraries without tape volume directories*
- *Fully manage the location and usage of both online and offline files*
- *Utilize hierarchical storage management functionality to load balance resources for file writes and recalls*

- *Create operational storage tiers with tape—rather than storing static, unchanging files on costly disk*
- *Take advantage of on-disk metadata support, which allows faster searches for archived files based on user-defined metadata.*

Linear Tape File System Library Edition

IBM Linear Tape File System (LTFS) provides direct, intuitive, and graphical access to data stored in IBM tape drives and libraries using Linear Tape-Open (LTO) Ultrium 6 or 5 tape cartridges, as well as IBM 3592 tape cartridges in libraries with IBM TS1140 tape drives. It eliminates the need for additional tape management and software to access data.

IBM Linear Tape File System Library Edition (LTFS LE) can support data either on single tape cartridges or multiple cartridges in a tape library, automatically loading the cartridges per file access. It also graphically displays tape library contents in the operating system (OS) graphical user interface (GUI) format, typically a folder/tree structure. The metadata of

MORE ON THE WEB

- [LTFS Library Edition specifications](#)
- [LTFS Library Edition assets on PartnerWorld](#)
- [LTFS info on IBM.com](#)
- [LTFS Competitive Insights](#)
- [LTFS blog search](#)
- [LTFS Twitter search](#)

each cartridge, once mounted, is cached in server memory. Metadata operations, such as browse directory and filename search, do not require tape movement.

LTFS LE can integrate with IBM Linear Tape File System Storage Manager for even more functionality, from managing scheduling and access to tape cartridges in multiple drives, to supporting data and control path failover.

Here are some quick LTFS Library Edition facts:

- *Access and manage files in IBM tape libraries as easily as if they were on disk*
- *Perform metadata operations such as browse directory and filename search without tape movement*

- *Eliminate the need for an external database for access to—or creation of—files*
- *Provide direct, intuitive, and graphical access to data stored in IBM tape drives and libraries*
- *Set a new standard for ease and portability for open-systems tape storage*
- *Share data across platforms by simply dragging and dropping files.*

Linear Tape File System Enterprise Edition

IBM Linear Tape File System Enterprise Edition (LTFS EE) gives organizations an easy way to use cost-effective IBM tape drives and libraries within a tiered storage infrastructure. By using tape libraries instead of disks for Tier 2 and Tier 3 data storage—data that is stored for long-term retention—organizations can improve efficiency and reduce costs. In addition, LTFS EE seamlessly integrates with the scalability, manageability, and performance of GPFS, an IBM enterprise file management platform that enables organizations to move beyond simply adding storage—to optimizing data management.

MORE ON THE WEB

- [LTFS Enterprise Edition specifications](#)
- [LTFS Enterprise Edition assets on PartnerWorld](#)
- [LTFS info on IBM.com](#)
- [LTFS Competitive Insights](#)
- [LTFS blog search](#)
- [LTFS Twitter search](#)

LTFS EE provides direct, intuitive, and graphical access to data stored in IBM tape drives and libraries using Linear Tape-Open (LTO) Ultrium generation 6 or 5 tape cartridges, as well as IBM 3592 cartridges in libraries with IBM TS1140 tape drives. It eliminates the need for additional tape management and software to access data.

Here are some quick LTFS Enterprise Edition facts:

- *Simplify tape storage with IBM Linear Tape File System (LTFS) format, combined with the scalability, manageability, and performance of IBM General Parallel File System (GPFS)*

- Help reduce IT expenses by replacing tiered disk storage (Tier 2 and Tier 3) with IBM tape libraries
- Expand archive capacity simply by adding and provisioning media—without impacting the availability of data already in the pool.

7226 Multimedia Storage Enclosure

For organizations with rack-mount servers, the IBM 7226 Multimedia Storage Enclosure provides reliable and flexible data backup and security in the data center. With high-speed SAS, USB, and Fibre Channel interface options, as well as compatibility with a range of storage devices, 7226 Multimedia Storage Enclosure can help protect data on critical IBM Power Systems, POWER, BladeCenter, PureFlex,



7226 Specifications

Number of storage devices	4 maximum (assumes 4 DVD drives)
Electronics	Optional SAS or USB electronic bus
Typical compression	2:1 for tape drives and 3:1 for DVD optical drives; Compression on RDX disk drives is typically 2:1 and is supported by a Power Systems server
Color	Black
Warranty options	One year

and other compatible OEM systems.

High-density applications using half-high LTO Ultrium 6 and LTO Ultrium 5 SAS tape drives are available on IBM POWER7 Systems.

The 7226 system is a rack-mounted enclosure that features two drive bays that can hold one or two tape drives, one or two RDX removable disk drives, and up to four slim-design DVD-RAM drives. These drives can be mixed in any combination of any available drive technology or electronic interface in a single 7226 Multimedia Storage Enclosure.

Here are some quick 7226 facts:

- Features a low-profile design for configuration with up to four storage devices in a 1U space in a 19-inch rack
- Offers Linear Tape-Open (LTO) Ultrium 6 (6.25 TB), LTO Ultrium 5 (3.0 TB), and DAT160 (160 GB) tape drives, DVD-RAM or RDX removable disk drives
- Provides multiple options to connect to high-performance IBM POWER7, IBM POWER6, IBM POWER, IBM BladeCenter, IBM PureFlex, and other compatible original equipment manufacturer (OEM) systems

MORE ON THE WEB

- [7226 assets on PartnerWorld](#)
- [7226 info on IBM.com](#)
- [7226 Competitive Insights](#)
- [7226 blog search](#)
- [7226 Twitter search](#)

- Enables the performance and capacity enhancements of half-high LTO Ultrium 6 and 5 tape drives, with the additional versatility of RDX removable disk drives and DVD-RAM options.



TS1120 Tape Drive

The IBM System Storage TS1120 Tape Drive offers a solution to address applications that need high-capacity, fast access to data or long-term data retention. It is supported in IBM tape libraries, IBM frames that support stand-alone installation, and in an IBM 3592 Tape Frame Model C20 (3592 C20 frame) attached to a Sun StorageTek 9310 library.

MORE ON THE WEB

- [TS1120 assets on PartnerWorld](#)
- [TS1120 info on IBM.com](#)
- [TS1120 Competitive Insights](#)
- [TS1120 blog search](#)
- [TS1120 Twitter search](#)

TS1120 Specifications

Recording technique	Linear Serpentine
Number of tracks	896
Native capacity	700 GB (using JB/JX media), 3003/500 GB (using JA/JW media) or 603/100 GB (using JJ/JR media)
Native data rate	104 MBps
Adaptive data rates	104, 85, 70, 55, 41 and 35 MBps for 3592 cartridges initialized in Gen 2 format 54, 41, 36, 31 and 27 MBps for 3592 cartridges initialized in Gen 1 format

The tape drive uses IBM 3592 Cartridges, which are available in limited capacity (100 GB) for fast access to data, standard capacity (500 GB), or extended capacity (700 GB) that help to reduce resources to lower total cost. All three cartridges are available inrewritable or write-once-read-many (WORM) format.

Here are some quick TS1120 facts:

- Supports backup and archive for IBM Systems and selected open system platforms

- Helps support regulatory compliance requirements for records retention with WORM media
- Helps to enable secure sharing of information with support for data encryption and key management
- Offers native data transfer rate of up to 104 MBps
- Supports native cartridge capacities of up to 700 GB.

TS1130 Tape Drive

The IBM System Storage TS1130 Tape Drive features storage capability to help you establish easy access to data, better security, long-term retention and data governance, and regulatory compliance. The TS1130 tape drive offers high-performance flexible data storage with support for data encryption. The TS1130 tape drive can help you protect your investments in tape automation by offering compatibility with existing automation. To further protect your investment, an upgrade model is available for your existing IBM System Storage TS1120 Tape Drives. And to support a heterogeneous server environment, the TS1130 offers multiplatform support.



TS1130 Specifications

Recording technique	Linear Serpentine
Number of tracks	1152
Native capacity	1 TB (using JB/JX media), 640 GB (using JA/JW media), or 128 GB (using JJ/JR media)
Native sustained data rate	160 MBps (uncompressed)
Adaptive instantaneous data rates	163, 134, 109, 83, 56, 43 MBps for 3592 JB cartridges initialized in Gen 3 format; 150, 127, 104, 78, 52, 40 MBps for 3592 JB cartridges initialized in Gen 2 format; 71, 59, 47, 36, 24, 19, 13 MBps for 3592 JA cartridges initialized in Gen 1 format
Burst data rate	400 MBps
High-speed search (max)	12.4 mps
Warranty	One year

MORE ON THE WEB

- [TS1130 details on PartnerWorld](#)
- [TS1130 details on IBM.com](#)
- [TS1130 Competitive Insights](#)
- [TS1130 blog search](#)
- [TS1130 Twitter search](#)

The TS1130 Tape Drive supports IBM System Storage TS3400 and TS3500 Tape Libraries, IBM TotalStorage 3494 Tape Libraries, IBM Virtualization Engine TS7700, IBM racks that enable standalone installation, and IBM 3952 Tape Frames Model C20 (3952C20 frame) attached to a Sun 9310 library.

Here are some quick TS1130 facts:

- *Provides information security with support for encryption and key management*
- *Optimizes information retention with support for existing IBM tape automation*
- *Supports write once read many (WORM) cartridges to help satisfy compliance requirements*
- *Offers high performance and high capacity for storage consolidation.*

TS1140 Tape Drive

The IBM TS1140 tape drive features storage capabilities to help you establish easy, rapid access to data, improve security, provide long-term retention, and help maintain data governance and regulatory compliance. TS1140 offers high-performance, flexible data storage with support for data encryption. The drive can help you protect your investments in tape automation by offering compatibility with existing automation. To further protect your investment, an upgrade model is available for your existing IBM TS1130 tape drives. For flexible storage in heterogeneous server infrastructures, TS1140 offers multiplatform support and can scale from midrange to enterprise environments.



TS1140 Specifications

Recording technique	Linear Serpentine
Number of tracks	2560
Native capacity	4 TB (using JC/JY media), 1.6 TB (using JB/JX media), or 500 GB (using JK media)
Native sustained data rate	250 MBps
Adaptive data rates	13 speeds, from 76 MBps to 251 MBps for 3592 JC/JK/JY cartridges initialized in Gen 4 format 13 speeds, from 74 MBps to 203 MBps for 3592 JB/JX cartridges initialized in Gen 4 format 13 speeds, from 41 MBps to 163 MBps for 3592 JB/JX cartridges initialized in Gen 3 format 13 speeds, from 39 MBps to 151 MBps for 3592 JB/JX cartridges initialized in Gen 2 format 13 speeds, from 18 MBps to 72 MBps for 3592 JA/JJ/JR/JW cartridges initialized in Gen 1 format 13 speeds, from 36 MBps to 144 MBps for 3592 JA/JJ/JR/JW cartridges initialized in Gen 2 or Gen 3 format
Burst data rate	800 MBps
High-speed search	12.4 mps
Warranty	One year

MORE ON THE WEB

- [TS1140 assets on PartnerWorld](#)
- [TS1140 info on IBM.com](#)
- [TS1140 Competitive Insights](#)
- [TS1140 blog search](#)
- [TS1140 Twitter search](#)

TS1140 supports IBM TS3500 and IBM TS4500 tape libraries as well as IBM racks that enable stand-alone installation. TS1140 features three options for Type C media. The IBM 3592 Advanced data tape cartridge, JC, provides up to 4 TB native capacity, and up to 4 TB are provided by

the IBM 3592 Advanced WORM cartridge, JY. A limited capacity of up to 500 GB IBM 3592 Economy cartridge, JK, offers fast access to data. TS1140 can also read and write on previous media, type B (JB and JX), and read only on type A (JA, JW, JJ, and JR).

Here are some quick TS1140 facts:

- *Leverages high-performance, high-capacity tape processing for storage consolidation*
- *Helps enhance information security with support for encryption and key management*
- *Improves information retention with support for existing IBM tape automation*
- *Supports write-once-read-many (WORM) cartridges to help satisfy compliance requirements.*

TS2240 Tape Drive Express

The IBM System Storage TS2240 Tape Drive Express Model H4V—one of the entry-level IBM System Storage tape product family offerings—is the answer to growing storage requirements and shrinking backup windows. Incorporat-

MORE ON THE WEB

- [TS2240 Express assets on PartnerWorld](#)
- [TS2240 Express info on IBM.com](#)
- [TS2240 Express Competitive Insights](#)
- [TS2240 blog search](#)
- [TS2240 Twitter search](#)



TS2240 Specifications

Model and part number	Model Number; 3580 H4V, Part Number: 3580S4V
Tape drive type	IBM LTO Ultrium 4 half-height SAS tape drive V2
Physical capacity	Up to 1.6 TB per cartridge with 2:1 compression; 800 GB native
Number of tape drives	1
Number of tape cartridges	1
Data transfer rate	Up to 120 MB/sec native
Tape cartridges	IBM System Storage LTO Ultrium 800 GB Data Cartridge (95P4436), IBM System Storage LTO Ultrium 800 GB WORM Cartridge (95P4450)
Cleaning cartridge	IBM System Storage LTO Cleaning Cartridge (P/N 35L2086)
Warranty	Three-year customer replaceable unit (CRU) in most countries

ing the fourth generation of advanced Linear Tape-Open (LTO) technology, the TS2240 Tape Drive is suited for handling the backup, save and restore, and archival data storage needs of a wide range of small systems. In addition, the TS2240 provides up to 6 Gbps Serial Attached SCSI (SAS) connectivity and the security of LTO-based data encryption.

The System Storage TS2240 Tape Drive is an excellent tape storage solution for businesses requiring backup or low-cost, real-time archival storage of their data. The TS2240, with a half-height form factor, offers the same high capacity of full-height LTO-4 tape drives. The TS2240 has a physical storage capacity of up to 1.6 TB (with 2:1 compression) in

conjunction with the IBM System Storage LTO Ultrium 800 GB data cartridge, which provides up to twice the capacity of Ultrium 3 cartridges. The native data transfer performance of the TS2240 Tape Drive has increased over the previous LTO half-height generation to up to 120 MB/sec. The TS2240 Tape Drive continues to provide an excellent alternative to slower and smaller capacity 1/4-inch, 4 mm, and 8 mm digital linear tape (DLT or SDLT) drives.

Here are some quick TS2240 facts:

- *Provides high-capacity tape storage in a small, half-height form factor to address backup and archiving requirements*
- *Offers highly secure data storage using available hardware encryption*
- *Provides a native data transfer rate of up to 120 MB/sec*
- *Designed for the midrange open systems environment*
- *Supports two TS2240 Model H4Vs side by side in a standard 19-inch rack using the optional rack mount shelf.*

TS2250 Tape Drive Express

The IBM System Storage TS2250 Tape Drive Express is the entry-level tape product family offering. Incorporating the latest generation of the industry-leading linear tape-open (LTO) technology, the TS2250 Tape Drive is suited for handling backup, save and restore, and archival data storage needs with higher capacity and higher data transfer rates than the

previous generation. In addition, the IBM Ultrium 5 technology is designed to support media partitioning, and the new IBM Linear Tape File System technology. It also continues to support encryption of data and WORM media.

The IBM System Storage TS2250 Tape Drive is an excellent tape storage solution for businesses requiring backup and low-cost, archival storage of their data.



TS2250 Specifications

Available configurations	Model 3580 H5S—One IBM Ultrium 5 Tape Drive, 6 Gbps SAS interface PN 3580S5E
Tape drive type	IBM LTO Ultrium 5
Physical capacity	1.5 TB native; 3.0 TB with 2:1 compression
Number of tape drives	1
Number of tape cartridges	1
Data transfer rate	Up to 140 MBps native
Media type	IBM LTO 5 Data Cartridge IBM LTO Cleaning Cartridge
Warranty	Three-year, customer replaceable unit (CRU) in most countries

MORE ON THE WEB

- [TS2250 Express assets on PartnerWorld](#)
- [TS2250 Express info on IBM.com](#)
- [TS2250 Express Competitive Insights](#)
- [TS2250 blog search](#)
- [TS2250 Twitter search](#)

The TS2250, with a half height form factor, offers more capacity than the full height LTO 4 tape drive in less space. The TS2250 provides a physical storage capacity of up to 3.0 TB (with 2:1 compression) in conjunction with the new IBM Ultrium 1.5 TB data cartridge, nearly double the capacity of previous Ultrium 4 cartridges. The data transfer performance of the TS2250 Tape Drive has increased over the previous LTO half height generation with a transfer rate of up to 140 MBps with 6 Gbps SAS interface connectivity. It also now offers two SAS and one Ethernet port per drive to improve availability.

Here are some quick TS2250 facts:

- *Helps reduce costs with lower power consumption, consolidation, and space reduction*

- *Supports media partitioning on LTO Ultrium 5 Media and new IBM Linear Tape File System technology*
- *Nearly doubles the cartridge capacity of the previous generation in a small half height form factor*
- *Designed to address backup and archiving requirements with lower cost implementation.*

TS2260 Tape Drive Express

The IBM System Storage TS2260 Tape Drive Express is the answer to growing storage requirements—and shrinking backup windows. Incorporating the latest generation of industry-leading LTO technology, the TS2260 Tape Drive is suited for handling backup, save and restore, and archival data storage needs with higher capacity and higher data transfer rates than the previous generation. In addition, the LTO Ultrium 6 technology is designed to support media partitioning and the IBM Linear Tape File System Single Drive Edition. It also continues to support encryption of data and write-once-read-many (WORM) media.

The IBM System Storage TS2260 Tape Drive is an excellent tape storage solution for organizations requiring backup and low-cost, archival storage of data. The TS2260, with a half-height form factor, offers more capacity than the full height LTO Ultrium 5 tape drive in less space. The TS2260 provides a physical storage capacity of up to 6.25 TB (with 2.5:1 compression). The data transfer performance has increased over the previous LTO Ultrium half-height generation with a transfer rate of up to 160 MBps with 6 Gbps SAS interface connectivity. It also offers two SAS and one Ethernet port per drive to improve availability.

MORE ON THE WEB

- [TS2260 Express assets on PartnerWorld](#)
- [TS2260 Express info on IBM.com](#)
- [TS2260 Express Competitive Insights](#)
- [TS2260 blog search](#)
- [TS2260 Twitter search](#)



TS2260 Specifications

Available configurations	Model 3580 H6S—One LTO Ultrium 6 Tape Drive, 6 Gbps SAS interface PN 3580S6E
Tape drive type	LTO Ultrium 6
Physical capacity	2.5 TB native; 6.25 TB with 2 5:1 compression
Number of tape drives	1
Number of tape cartridges	1
Data transfer rate	Up to 160 MBps native
Media type	Read and write: LTO Ultrium 6 2.5 TB data cartridge 2.5 TB WORM cartridge LTO Ultrium 5 1.5 TB data cartridge 1.5 TB WORM cartridge Read only: LTO Ultrium 4 800 GB data cartridge 800 GB WORM cartridge Also available: LTO Ultrium cleaning cartridges
Warranty	Three-year, customer replaceable unit (CRU) in most countries

Here are some quick TS2260 facts:

- *Designed to provide long-term backup and archive storage data protection while lowering overall storage costs*
- *Easily accesses data stored on Linear Tape-Open (LTO) Ultrium 6 and 5 cartridges through the use of IBM Linear Tape File System technology*
- *Gains more energy efficiency than with previous generations*
- *Supports media partitioning on LTO Ultrium 6 media and Linear Tape File System*
- *Doubles the compressed cartridge capacity with more than 40 percent better performance than LTO Ultrium generation 5 drive.*

TS2340 Tape Drive Express

The IBM System Storage TS2340 Tape Drive—the entry-level IBM System Storage tape product family offering—is the answer to growing storage requirements and shrinking backup windows. Incorporating the fourth generation of advanced linear tape-open (LTO) technology, the TS2340 Tape Drive is suited for handling the backup, save and restore, and archival data storage needs of a wide range of small systems. In addition, the TS2340 provides added security features by supporting encryption of data with 3 Gbps SAS connectivity.

MORE ON THE WEB

- [TS2340 Express assets on PartnerWorld](#)
- [TS2340 Express info on IBM.com](#)
- [TS2340 Express Competitive Insights](#)
- [TS2340 blog search](#)
- [TS2340 Twitter search](#)



TS2340 Specifications

Available configurations	Model L43—One IBM Ultrium 4 Tape Drive, LVD Ultra160 SCSI attach Model S43—One IBM Ultrium 4 Tape Drive, 3 Gbps SAS attach
Tape drive type	IBM LTO Ultrium 4
Physical capacity	Up to 1.6 TB per cartridge with 2:1 compression; 800 GB native
Number of tape drives	1
Number of tape cartridges	1
Data transfer rate	Up to 120 MB/sec native
Media type	IBM LTO Ultrium 4 IBM TotalStorage LTO Ultrium 800 GB Data Cartridge (PN TBD) IBM TotalStorage LTO Cleaning Cartridge (PN TBD)
Warranty	Three-year, customer replaceable unit (CRU) in most countries

The IBM System Storage TS2340 Tape Drive is an excellent tape storage solution for businesses requiring backup or low-cost, real-time archival storage of their data within a small window of time—it offers high-capacity and performance to help address the most demanding requirements. The TS2340 has a physical storage capacity of up to 1.6 TB (with 2:1 compression) in conjunction with the new IBM Ultrium 800 GB data cartridge,

which provides up to double the capacity of previous Ultrium 3 technology. Along with its higher capacity, the data transfer performance of the TS2340 Tape Drive has increased over the previous generation for a native data transfer rate of up to 120 MBps. The TS2340 Tape Drive continues to provide an excellent alternative to slower and smaller capacity 1/4-inch, 4 mm, and 8 mm DLT/SDLT tape drives.

Here are some quick TS2340 facts:

- *Designed to provide high-capacity and performance to address the most demanding backup and archiving requirements*
- *Doubles the cartridge capacity of previous generation LTO drives*
- *Available hardware encryption designed to offer highly secure data storage along with high performance*
- *Native data transfer rate of up to 120 MBps*
- *Choice of SCSI or SAS interfaces.*

TS2350 Tape Drive Express

The IBM System Storage TS2350 Tape Drive Express—part of the entry-level IBM System Storage tape product family—supports these needs by leveraging the newest generation of Linear Tape-Open (LTO) technology to help cost-effectively handle growing storage requirements.

The TS2350 Tape Drive is suited for handling backup, save and restore, and archival data storage needs with higher capacity and higher data transfer rate than previous generation. In addition, the IBM Ultrium 5 technology is designed to support media partitioning, and the new IBM Linear Tape File System technology. It also

continues to support encryption of data and WORM media.

The TS2350 Tape Drive is an excellent tape storage solution for businesses requiring backup and archival storage of their data. The TS2350 offers high physical storage capacity of up to 3.0 TB (with 2:1 compression) in conjunction with the new IBM Ultrium 1.5 TB data cartridge, which provides nearly double the capacity of previous Ultrium 4 cartridges. The data transfer rate of the TS2350 Tape Drive has increased over the previous LTO generation to up to 140 MBps with 6 Gbps SAS interface connectivity. It also offers two SAS and one Ethernet port per drive to improve availability.



TS2350 Specifications

Available configurations	Model 3580 S53—One IBM Ultrium 5 Tape Drive, 6 Gbps SAS interface PN 3580S5
Tape drive type	IBM LTO Ultrium
Physical capacity	1.5 TB native; 3.0 TB with 2:1 compression
Number of tape drives	1
Number of tape cartridges	1
Data transfer rate	Up to 140 MBps native
Media type	IBM LTO 5 Data Cartridge IBM LTO Cleaning Cartridge
Warranty	Three-year, customer replaceable unit (CRU) in most countries

MORE ON THE WEB

- [TS2350 Express assets on PartnerWorld](#)
- [TS2350 Express info on IBM.com](#)
- [TS2350 Express Competitive Insights](#)
- [TS2350 blog search](#)
- [TS2350 Twitter search](#)

Here are some quick TS2350 facts:

- *Helps reduce costs with lower power consumption, consolidation, and space reduction*
- *Supports media partitioning on LTO Ultrium 5 Media and new IBM Linear Tape File System technology*
- *Nearly doubles the cartridge capacity of previous-generation LTO Ultrium 4 drives*
- *Designed to provide greater capacity and performance to address the most demanding backup and archiving requirement.*

TS2360 Tape Drive Express

The IBM System Storage TS2360 Tape Drive Express—part of the entry-level IBM System Storage tape product family—supports the storage, security, and compliance requirements of today’s organizations. The TS2360 leverages the newest generation of LTO Ultrium technology, helping to cost-effectively handle growing storage requirements.

The TS2360 Tape Drive Express is suited for handling backup, save and restore, and archival data storage needs with higher capacity and a higher data transfer rate than the previous generation. In addition, the LTO Ultrium 6 technology is designed to support media partitioning and Linear Tape File System Single Drive Edition. It also continues to support



TS2360 Specifications

Available configurations	Model 3580 S63—One IBM Ultrium 6 Tape Drive, 6 Gbps SAS interface PN 3580S6X
Tape drive type	LTO Ultrium 6
Physical capacity	2.5 TB native; 6.25 TB with 2:1 compression
Number of tape drives	1
Number of tape cartridges	1
Data transfer rate	Up to 160 MBps native
Media type	Read and write: LTO Ultrium 6 2.5 TB data cartridge 2.5 TB WORM cartridge LTO Ultrium 5 1.5 TB data cartridge 1.5 TB WORM cartridge Read only: LTO Ultrium 4 800 GB data cartridge 800 GB WORM cartridge Also available: IBM LTO Ultrium cleaning cartridges
Warranty	Three-year, customer replaceable unit (CRU) in most countries

MORE ON THE WEB

- [TS2360 Express assets on PartnerWorld](#)
- [TS2360 Express info on IBM.com](#)
- [TS2360 Express Competitive Insights](#)
- [TS2360 blog search](#)
- [TS2360 Twitter search](#)

encryption of data and write-once-read-many (WORM) media.

Here are some quick TS2360 facts:

- *Helps reduce costs with lower power consumption, consolidation, and space reduction*
- *Supports media partitioning on Linear Tape-Open (LTO) Ultrium 6 media and IBM Linear Tape File System*
- *Double the compressed cartridge capacity and over 40 percent better performance compared to LTO Ultrium 5 drives*

- *Designed to provide greater capacity and performance to address the most demanding backup and archiving requirements*
- *More energy efficient than previous generations.*

TS2900 Tape Autoloader Express

The IBM System Storage TS2900 Tape Autoloader Express is designed for entry-level automated backup for rack system and small-to-medium business environments. With a low profile, high-density storage capacity, the TS2900 is ideally suited for backup and archival operations. The TS2900 is available with IBM HH LTO-6, HH LTO-5, HH LTO-4, or HH LTO-3 tape technology for a high-capacity, entry-priced tape storage solution.



TS2900 Specifications

Drive options	Ultrium 4 Half-high: 6 Gbps SAS Ultrium 5 Half-high: 6 Gbps SAS Ultrium 6 Half-high: 6 Gbps SAS
Available models	LTO-4 3572 S4H (AAS - WW) 3572S4R (HVEC - WW) LTO-5 3572 S5H (AAS – AP, LA) 3572S5R (HVEC – WW) LTO-6 3572 S6H (AAS – AP, LA) 3572 S6R (HVEC – WW)
Deskside cover kit	PN 45E3789
Additional tape magazine	PN 45E3793
Rack mount kit	PN 45E3785
Number of tape drives	1
Tape cartridge capacity	9
I/O stations	1
Physical capacity	LTO 4: Up to 7.2 TB (14.4 TB with 2:1 compression) LTO 5: Up to 13.5 TB (27 TB with 2:1 compression) LTO 6: Up to 22.5 TB (56.25 TB with 2 5:1 compression)
Data transfer rate	LTO 4: Up to 120 MBps LTO 5: Up to 140 MBps LTO 6: Up to 160 MBps

MORE ON THE WEB

- [TS2900 Tape Autoloader Express assets on PartnerWorld](#)
- [TS2900 Tape Autoloader Express info on IBM.com](#)
- [TS2900 Tape Autoloader Express Competitive Insights](#)
- [TS2900 blog search](#)
- [TS2900 Twitter search](#)

The TS2900 is equipped with standard features designed to provide ease-of-use and secured data backup. Web-based remote management, a barcode reader, and a removable tape magazine help provide ease of use. The TS2900 can be used in a rack system, or on a desktop next to a server in an office. These types of fea-

tures help reduce the requirements of IT personnel staff, as well as help centralize backup in the data center. The TS2900 is also designed to support the encryption of sensitive user data in combination with HH LTO-6, HH LTO-5, or LTO-4 tape technology from IBM. With 6 Gbps SAS attach, the TS2900 is supported on IBM

Power Systems, IBM System x, Intel, and other competitive open system server platforms.

Here are some quick TS2900 facts:

- 1U slim profile designed for rack system environments for automated, high-capacity tape storage
- Features the newest generation of LTO with IBM Ultrium 6 half-height (HH) technology designed for reliable performance in small-to-medium open system environments
- Lowest entry price of any IBM tape automation offering IBM half-height tape technology.

TS3100 Tape Library Express

The IBM System Storage TS3100 Tape Library Express model and its storage management applications are designed to address capacity, performance, data protection, reliability, availability, affordability, and application requirements. It is designed as a functionally rich, entry tape-storage solution incorporating LTO tape technology. The IBM TS3100 Express model is an excellent solution for large-

capacity or high-performance tape back-up with or without random access. The TS3100 is also an excellent choice for tape automation for IBM Power Systems, IBM System x, and other open systems.

The IBM TS3100 Tape Library Express is well-suited for handling backup, save and

restore, and archival data-storage needs for small to medium-size environments. With the use of one LTO full height tape drive or up to two LTO half-height tape drives and 24 tape cartridge capacity, the IBM TS3100 is designed to take advantage of LTO technology to cost-effectively handle growing storage requirements.



TS3100 Specifications

Drive Options	SAS (FC #8145 or 95P5006); Fibre Channel (#8144 or 95P5004) Ultrium 4 Half-Height: 6 Gbps SAS (FC # 8149 or 46X7117), 8 Gbps FC (FC # 8148 or 46X6912)
Available models	TS3100 Tape Library Model L2U Driveless 3573 L2U (MTM), 3573 2UL (HVEC)
Ultrium tape cartridges	LTO Ultrium 4 media: FC#8405; LTO Ultrium 5 media: FC#8505; LTO Ultrium 6 media: FC#8605
Ultrium cleaning cartridge	23R7008 or FC #8002
Tape drive type	LTO Ultrium 4 half-height and full-height; LTO Ultrium 5 half-height and full-height; LTO Ultrium 6 half-height and full-height
Number of drives	1–2
Number of tape cartridges	24
Physical capacity	Capacity per cartridge Up to 6.25 TB compressed 2.5:1 with LTO Ultrium 6; 2.5 TB native Up to 3 TB compressed 2:1 with LTO Ultrium 5; 1.5 TB native Up to 1.6 TB compressed 2:1 with LTO Ultrium 4; 800 GB native Library capacity Up to 150 TB compressed 2.5:1 with LTO Ultrium 6; 60 TB native Up to 72 TB compressed 2:1 with LTO Ultrium 5; 36 TB native Up to 38.4 TB compressed 2:1 with LTO Ultrium 4; 19.2 TB native
Data transfer rate	Up to 160 Mbps native with LTO Ultrium 6 Up to 140 MBps native with LTO Ultrium 5 Up to 120 MBps native with LTO Ultrium 4

MORE ON THE WEB

- [TS3100 Express assets on PartnerWorld](#)
- [TS3100 Express info on IBM.com](#)
- [TS3100 Express Competitive Insights](#)
- [TS3100 blog search](#)
- [TS3100 Twitter search](#)

Here are some quick TS3100 facts:

- *Designed to support the newest generation of LTO with one Ultrium LTO 6 full-height tape drive or up to two LTO Ultrium 6 half-height tape drives, as well as LTO Ultrium 5 and 4 tape drives using a 2U form factor to help increase capacity and performance*
- *Designed to support cost-effective backup, save and restore, and archival storage in sequential or random access mode with a standard barcode reader*
- *Designed to offer outstanding capacity, performance, and reliability for midrange and network tape-storage environments in a 2U form factor with 24 data cartridge slots and a mail slot*

- *Remote library management through a standard Web interface supports flexibility and greater administrative control of storage operations.*

TS3200 Tape Library Express

The IBM System Storage TS3200 Tape Library Express Model leverages the newest generation of LTO technology to help cost-effectively handle growing storage requirements. The TS3200 Express Model and its storage management applications are designed to address capacity, performance, data protection, reliability, affordability, and application requirements. It is designed as a functionally rich, high-capacity, entry-level tape-storage solution incorporating LTO Ultrium tape technology. The IBM TS3200 Express model is an excellent solution for large-capacity or high-performance tape backup with or without random access. The TS3200 is also an excellent choice for tape automation for IBM Power Systems, IBM System x, and other open systems.

The IBM TS3200 Tape Library Express is well-suited for handling the backup, restore, and archive data-storage needs for small to medium-size environments. With the use of up to two LTO full-height tape drives or up to four LTO half-height tape drives and 48 tape cartridge capacity, the IBM TS3200 model is designed to use LTO technology to cost-effectively handle growing storage requirements. The TS3200 Tape Library is configured with four removable cartridge magazines, two on the left side (24 data cartridge slots) and two on the right (24 data cartridge slots). Additionally, the lower left magazine includes a three-slot I/O station to help support continuous library operation while importing and exporting me-

MORE ON THE WEB

- [TS3200 Express assets on PartnerWorld](#)
- [TS3200 Express info on IBM.com](#)
- [TS3200 Express Competitive Insights](#)
- [TS3200 blog search](#)
- [TS3200 Twitter search](#)



TS3200 Specifications

Drive options	Ultrium 6 full-height: 8 Gbps Fibre Channel (FC#8344) Ultrium 6 half-height: 6 Gbps SAS (FC#8347); 8 Gbps Fibre Channel (FC#8348) Ultrium 5 Full Height: 6 Gbps SAS (FC#8245 or 46X2683); 8 Gbps Fibre Channel (FC#8244 or 46X2682) Ultrium 5 Half Height: 6 Gbps SAS (FC#8247 or 46X2685); 8 Gbps Fibre Channel (FC#8248 or 46X2684) Ultrium 4 Full Height: LVD SCSI (FC#8143 or 95P5002), 3 Gbps SAS (FC#8145 or 95P5006); 4 Gbps Fibre Channel (FC#8144 or 95P5004) Ultrium 4 Half Height: 6 Gbps SAS (FC#8149 or 46X7117), 8 Gbps FC (FC#8148 or 46X6912)
Available models	TS3200 Tape Library Model L4U Driveless:3573 L4U (MTM), 35734UL (HVEC)
Ultrium tape cartridges	LTO Ultrium 4 media: FC#8405; LTO Ultrium 5 media: FC#8505; LTO Ultrium 6 media: FC#8605
Ultrium cleaning cartridge	23R7008 or FC#8002
Tape drive type	LTO Ultrium 6 full-height and half-height; LTO Ultrium 5 full-height and half-height; LTO Ultrium 4 full-height and half-height
Number of drives	1–4
Physical capacity	Cartridge capacity: 6.25 TB compressed 2.5:1 with LTO Ultrium 6; 2.5 TB native 3.0 TB compressed 2:1 with LTO Ultrium 5; 1.5 TB native 1.6 TB compressed 2:1 with LTO Ultrium 4; 800 GB native Library capacity: 300 TB compressed 2.5:1 with LTO Ultrium 6; 120 TB native 144 TB compressed 2:1 with LTO Ultrium 5; 72 TB native 76.8 TB compressed 2:1 with LTO Ultrium 4; 38.4 TB native
Data transfer rate	Up to 120 MBps native with LTO 4 Up to 140 MBps native with LTO 5 Up to 160 MBps native with LTO 6

dia. A barcode reader is standard in the library, supporting the library's operation in sequential or random access mode. The TS3200 also comes standard with remote

management capabilities to allow for remote administration of the tape library through a Web interface. Path Failover, an optional feature, is designed to provide

automatic control path failover to a pre-configured redundant control path in the event that a host adapter or control path drive is lost without aborting the current job in process.

Here are some quick TS3200 facts:

- *Designed to support the latest Linear Tape-Open (LTO) technology with up to two LTO Ultrium 6 full-height tape drives or up to four LTO Ultrium 6 half-height tape drives, as well as LTO Ultrium generation 4 and 5 tape drives using a 4U form factor*
- *Designed to offer outstanding capacity, performance, and reliability for a cost-effective backup, restore, and archive for midrange storage environments*
- *Remote library management through a standard web interface supports flexibility and greater administrative control of storage operations.*

TS3310 Tape Library

The IBM System Storage TS3310 Tape Library is a modular scalable tape library designed to address the tape storage needs of rapidly growing companies who find themselves space- and resource-constrained with tape backup and other tape applications.

Designed around a 5U high modular base library unit, the TS3310 can scale vertically with expansion for Linear Tape-Open (LTO) cartridges, drives, and redundant power supplies.

The base library module, model L5B, is the entry point for the product family. It contains all of the necessary robotics and intelligence to manage the 5U high



TS3310 Specifications

Model	3576 Model L5B	3576 model L5B and four E9U models
Configuration	Base library	Base library and 4 expansion units
LTO storage slots (max)	41	409
LTO I/O slots (max)	6	54
Maximum tape drives	2	18
Total physical capacity (2:1 compression)	Up to 256.24 TB	Up to 2.55 PB
Capacity on demand increments	N/A	46 cartridges
Maximum logical libraries	2	18

library system, which houses up to 41 cartridges—35 storage slots and six input/output (I/O) slots; and two LTO generation 6, generation 5, generation 4, and generation 3 tape drives.

The TS3310 model L5B can be expanded with the addition of expansion units, the model E9U.

Here are some quick TS3310 facts:

- Provides a modular, scalable tape library designed to grow as your needs grow
- Features desktop, desk-side, and rack-mounted configurations
- Delivers optimal data storage efficiency with high cartridge density using standard or WORM LTO Ultrium data cartridges

MORE ON THE WEB

- [TS3310 assets on PartnerWorld](#)
- [TS3310 info on IBM.com](#)
- [TS3310 Competitive Insights](#)
- [TS3310 blog search](#)
- [TS3310 Twitter search](#)

- Can simplify user access to data stored on LTO Ultrium 6 and 5 cartridges through the use of IBM Linear Tape File System software
- Doubles the compressed cartridge capacity and provides over 40 percent better performance compared to 5th generation LTO Ultrium drives.

TS3500 Tape Library

The IBM System Storage TS3500 Tape Library continues to lead the industry in tape drive integration with features such as persistent worldwide name, multipath architecture, drive/media exception reporting, remote drive/media management, and host-based path failover. The L23 and D23 frames support the IBM System Storage TS1140, TS1130, TS1120, or IBM 3592 J1A tape drives. The L53 and D53 frames support LTO Ultrium 6 tape drives as well as previous-generation LTO Ultrium tape drives. L-frame models support improved cartridge handling, hot-swappable drive packaging and the option of an additional 16-slot I/O station. The TS3500 model D23 and D53 frames can be attached to existing model L22 or



TS3500 Specifications

Library shuttle connector	IBM System Storage Tape Library Connector Model SC1
Tape drive types	TS1140, TS1130, TS1120 or 3592 tape crives or IBM LTO Ultrium 6, 5, 4, 3, 2 or 1 Tape Drives
Number of frames per library	One base frame, up to 15 expansion frames The TS3500 Model HA1 installation provides one of the two additional frames required as service bays in a dual-accessor library
Number of libraries per complex	Up to 15 libraries
Number of drives	Up to 12 per frame; Up to 192 per library string; Up to 2,700 per library complex
Number of tape cartridges	L23—up to 260 D23—up to 400 S24—up to 1,000 Total supported per library: >15,000 Total supported per complex: >225,000 L53—up to 287 D53—up to 440 S54—up to 1,320 Total supported per library: >20,000 Total supported per complex: >300,000
Number of I/O slots	Up to 224 per library (16 I/O slots standard) Up to 3,360 per complex
Number of logical libraries	Maximum of 192 per library (up to number of drives installed) Maximum of 2,700 per complex

D52 frames. Mixed media is supported by combining LTO Ultrium tape drives and the TS1140, TS1130, TS1120 or 3592 J1A tape drives within the TS3500 library, frame by frame.

Here are some quick TS3500 facts:

- *Supports highly-scalable, automated data retention on tape using Linear Tape-Open (LTO) Ultrium and IBM 3592 tape drive families*
- *Delivers extreme scalability and capacity, growing from one to 16 frames per library and from one to 15 libraries per library complex*
- *Provides up to 900 PB of automated, low-cost storage under a single library image, improving floor space utilization and reducing storage cost per TB with IBM 3592 JC Enterprise Advanced Data Cartridges*

MORE ON THE WEB

- [TS3500 assets on PartnerWorld](#)
- [TS3500 info on IBM.com](#)
- [TS3500 Competitive Insights](#)
- [TS3500 blog search](#)
- [TS3500 Twitter search](#)

- *Enables data security and regulatory compliance via support for tape drive encryption and write-once-read-many (WORM) cartridges.*

TS4500 Tape Library

The IBM TS4500 tape library is a next-generation storage solution designed to help mid-size and large enterprises respond to storage challenges. Among these are high data volumes and the growth in data centers, increasing cost of data center storage footprints, the difficulty of migrating data across vendor platforms, and increased complexity of IT training and management as staff resources shrink.

In TS4500, IBM delivers the density that today's and tomorrow's data growth requires—along with the cost efficiency and the manageability to grow with business data needs while preserving existing investments in IBM tape library products. Now, organizations can achieve both a low cost per terabyte (TB) and a high TB density per square foot. In fact, TS4500 can store up to 2.2 PBs of data in a single 10 square foot library frame, up to 3.4

MORE ON THE WEB

- [TS4500 assets on PartnerWorld](#)
- [TS4500 info on IBM.com](#)
- [TS4500 Competitive Insights](#)
- [TS4500 blog search](#)
- [TS4500 Twitter search](#)

times more capacity than the IBM TS3500 tape library.

Here are some quick TS4500 facts:

- *Stores up to 2.2 petabytes (PBs) of data in a single frame library—up to 3.4 times as much capacity as previous generations of IBM tape libraries*
- *Improves storage density with increased expansion frame capacity—up to 2.4 times and support for 33 percent more tape drives*
- *Manages storage using the Advanced Library Management System feature*
- *Improves business continuity and disaster recovery with automatic control path and data path failover*



TS4500 Specifications

Frame definition	L25—Base frame for TS1140 (3592) drives and cartridges – includes 36 I/O slots D25—Drive-capable and storage expansion frame for TS1140 (3592) drives and cartridges S25—Storage-only expansion frame for TS1140 (3592) cartridges L55—Base frame for LTO drives and cartridges – includes 32 I/O slots D55—Drive-capable and storage expansion frame for LTO drives and cartridges S55—Storage-only expansion frame for LTO cartridges
Tape drive types	TS1140 (3592), LTO Ultrium 6, LTO Ultrium 5 tape drives
Number of frames per library	One base frame, up to 3 expansion frames
Number of libraries per complex	Up to 15 libraries
Number of drives	Up to 16 per frame (up to 12 in frame 1) Up to 60 per library string
Number of tape cartridges	L25—up to 660 (up to 550 in frame 1); D25—up to 740 (up to 590 in frame 1); S25—up to 1,000 (up to 798 in frame 1); Total supported per library: up to 3,550 L55—up to 882 (up to 730 in frame 1); D55—up to 970 (up to 774 in frame 1); S55—up to 1,320 (up to 1,054 in frame 1); Total supported per library: up to 4,690
Capacity	3592 advanced cartridges: up to 14.2 PB per library (42.6 PB with 3:1 compression) LTO Ultrium 6 cartridges: up to 11.7 PB per library (up to 29.3 PB with 2.5:1 compression)

TS7620 ProtecTIER Deduplication Appliance Express

Designed for mid-size companies needing a more holistic approach to data protection, the IBM System Storage TS7620 ProtecTIER Deduplication Appliance Express leverages unique data deduplication technology to help solve critical backup and recovery challenges.

Available in two configuration options, the TS7620 ProtecTIER Deduplication Appliance Express is an integrated server and storage hardware platform that ships with IBM ProtecTIER deduplication software preinstalled. This solution has a preconfigured repository and can be configured with either a Virtual Tape Library or Symantec OpenStorage interface. The TS7620 ProtecTIER Deduplication Appliance Express provides the essential capacity, price/performance, reliability, availability, and scalability features your business demands.

- *Helps ensure security and regulatory compliance with tape-drive encryption and write-once-read-many (WORM) media*
- *Supports Linear Tape-Open (LTO) Ultrium 6, LTO Ultrium 5, and IBM TS1140 tape drives.*



Here are some quick TS7620 facts:

- *Improves backup and recovery performance with high-speed, disk-based data protection*
- *Accelerates recovery of critical data*
- *Optimizes storage infrastructure and helps reduce total cost of ownership (TCO)*
- *Helps achieve business resilience objectives without changing existing backup procedures and practices*
- *Leverages data deduplication technology to help solve backup and recovery challenges in mid-size environments.*

MORE ON THE WEB

- [TS7620 specifications](#)
- [TS7620 assets on PartnerWorld](#)
- [TS7620 info on IBM.com](#)
- [TS7620 Competitive Insights](#)
- [TS7620 blog search](#)
- [TS7620 Twitter search](#)

TS7650G ProtecTIER Deduplication Gateway

The IBM System Storage TS7650G ProtecTIER Deduplication Gateway is designed to meet the disk-based data protection needs of the enterprise data center while enabling significant infrastructure cost reductions. The solution offers industry-leading inline deduplication performance and scalability up to 1 petabyte (PB) of physical storage capacity per system, and can provide up to 25 PB or more backup storage capacity. Combined with IBM or third-party storage, the TS7650G ProtecTIER Deduplication Gateway provides a powerful disk-based repository to improve the performance, retention, and availability of backup and archive data.



MORE ON THE WEB

- [TS7650G specifications](#)
- [TS7650G assets on PartnerWorld](#)
- [TS7650G info on IBM.com](#)
- [TS7650G Competitive Insights](#)
- [TS7650G blog search](#)
- [TS7650G Twitter search](#)

Here are some quick TS7650G facts:

- *Improves backup and recovery and simplifies disaster-recovery operations*
- *Lowers operational costs and energy usage*
- *Manages more data with less infrastructure.*

TS7700 Virtualization Engine

The IBM TS7700 Virtualization Engine comprises a family of mainframe virtual tape solutions that optimize data protection and business continuance for System z data. Through the use of virtualization and disk cache, the TS7700 family operates at disk speeds while maintaining compatibility with existing tape operations.

The TS7700 family of System z tape virtualization is offered in two models:

- **IBM Virtualization Engine TS7720** contains only virtual tape drives creating virtual tape volumes within disk cache to provide high performance access for workloads that have the most demanding write and recall requirements. Virtualization Engine TS7720 features encryption capable high-capacity cache using 3 TB SAS disk drives with RAID 6 providing the ability to scale to very large capacities with the highest level of data protection.
- **IBM Virtualization Engine TS7740** not only stores data on virtual tape volumes within a disk cache, but also writes data by policy to physical tape. It attaches to and leverages the performance and capacity of IBM System Storage TS1140 and earlier IBM 3592 model tape drives installed in IBM System Storage TS3500 Tape Libraries. This fully integrated tiered storage hierarchy of disk and tape takes advantage of both tape and disk technologies to deliver performance for active data and best economics for inactive and archive data. This model

MORE ON THE WEB

- [TS7700 specifications](#)
- [TS7700 assets on PartnerWorld](#)
- [TS7700 info on IBM.com](#)
- [TS7700 Competitive Insights](#)
- [TS7720 blog search](#)
- [TS7720 Twitter search](#)
- [TS7740 blog search](#)
- [TS7740 Twitter search](#)

combines tape and disk to provide a flexible, policy-managed configuration that offers the benefits of both types of storage. Virtualization Engine TS7740 features encryption capable 600 GB SAS drives with RAID 6 protection.



Here are some quick TS7700 facts:

- *Gain innovative data protection and business continuance for IBM System z servers*
- *Keeps data secure, continuously available, and easy to manage*
- *Improves the performance of backup and recovery operations*
- *Supports disk or physical tape.*

Storage Software

Bringing together the best in infrastructure management, virtualization, and productivity software, IBM storage software utilizes the best in storage technology to answer your information on demand needs. In this section, we will examine some of the key storage software offerings.

MORE ON THE WEB

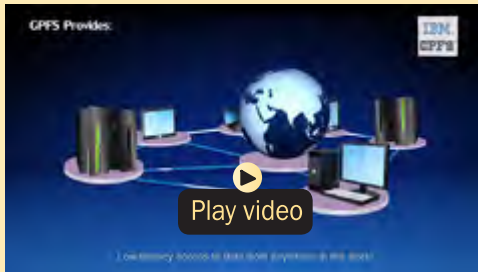
- [Browse all IBM storage software on IBM.com](#)

Elastic Storage (GPFS)

New code-named Elastic Storage is a proven, scalable, high-performance data and file management solution (based upon GPFS technology) that's being used ex-

MORE ON THE WEB

- [Elastic Storage assets on PartnerWorld](#)
- [Elastic Storage info on IBM.com](#)



Elastic Storage overview (6:02)

tensively across multiple industries worldwide. Elastic Storage provides simplified data management and integrated information lifecycle tools capable of managing petabytes of data and billions of files, in order to arrest the growing cost of managing ever growing amounts of data.

Elastic Storage provides world-class storage management delivered in software and used on any hardware, with extreme scalability flash accelerated performance, and automatic policy-based storage tiering from flash through disk to tape, reducing storage costs 90 percent while improving security and management

efficiency in cloud, big data & analytics environments.

Here are some fast Elastic Storage facts:

- *Enhanced security—native encryption and secure erase, NIST SP 800-131A encryption compliance*
- *Increased performance—Server-side Elastic Storage Flash caches increase IO performance up to 6X*
- *Improved usability—data migration; AFM, FPO, and backup/restore enhancements; reliability, availability, and service-ability enhancements.*

SmartCloud Storage Access

IBM SmartCloud Storage family helps customers become cloud agile by improving agility, security, and functionality for storage—in the cloud. As part of this family, IBM offers IBM SmartCloud Storage Access, an easy-to-deploy, simple-to-use software solution that features a self-ser-

vice portal for storage provisioning, monitoring, and reporting. It is designed to provide users with a self-service file-serving facility over the Internet. With a few clicks, users can create an account, provision storage, and start uploading files.

In addition, IBM SmartCloud Storage Access allows developers, application owners, and technical staff to quickly provision their own storage, such as for testing a new application or expanding the SAN capacity for a database application. Administrators can easily monitor and report storage usage for chargeback purposes. Plus, they can create different classes of storage for different users or departments within an organization. This allows for more efficient use of the underlying infrastructure.

Here are some quick SmartCloud Storage Access facts:

- *Quickly implement a private cloud storage service*
- *Provision storage capacity on demand*
- *Easily store and access files*
- *Offer simple reporting, monitoring, and chargeback services*

MORE ON THE WEB

- [SmartCloud Storage Access assets on PartnerWorld](#)
- [SmartCloud Storage Access info on IBM.com](#)

- *Improve overall IT efficiency and service quality*
- *Increase end-user and administrator productivity*
- *Deploy with selected IBM storage area network (SAN) and network-attached storage (NAS) storage infrastructures*
- *Enable third-party developers to integrate applications using top-level Representational State Transfer (REST) application programming interface (API).*

SmartCloud Virtual Storage Center

IBM SmartCloud Virtual Storage Center v5.2 enables IT storage managers to easily migrate to an agile, cloud-based, software-defined storage environment—and manage it effectively. This powerful solution enables organizations to optimize provisioning, capacity, availability, reporting, and management for virtualized storage.

IBM SmartCloud Virtual Storage Center includes core functionality from three top IBM offerings, including data and storage management from IBM Tivoli Storage Productivity Center, including its advanced functions; external virtualization found

MORE ON THE WEB

- [SmartCloud Virtual Storage Center assets on PartnerWorld](#)
- [SmartCloud Virtual Storage Center info on IBM.com](#)

in IBM System Storage SAN Volume Controller and the IBM Storwize family; and application-aware snapshot backup and restore capabilities from IBM Tivoli Storage FlashCopy Manager.

IBM SmartCloud Virtual Storage Center enables all three smarter storage characteristics for existing storage infrastructures.

Here are some quick SmartCloud Virtual Storage Center facts:

- *Migrate storage to an agile, cloud-based, software-defined environment without replacing existing storage systems*
- *Reduce unit cost for storage with automated analytics-driven data management that enables tiered storage optimization across the data center*
- *Boost availability and augment daily backups with advanced data protection capabilities*

- *Reduce administration complexity with the advanced IBM storage graphical user interface (GUI)*
- *Implement a robust management system to keep your storage infrastructure functioning smoothly*
- *Optimize storage provisioning, capacity utilization, availability, reporting, and management.*

Tivoli Storage Manager

IBM Tivoli Storage Manager is a family of software offerings designed to help organizations manage and protect their data by simplifying backup administration, delivering more scalable solutions, and helping to reduce costs related to backup and recovery.

Backups can be managed by IBM Tivoli Storage Manager Operations Center or VMware vCenter. Tivoli Storage Manager Operations Center delivers breakthrough visibility and ease of use, reducing the level of expertise required. Restores are simplified with item-level and near-instant recovery for virtual machines and for Linux and Microsoft Windows servers and workstations.

MORE ON THE WEB

- [Tivoli Storage Manager assets on PartnerWorld](#)
- [Tivoli Storage Manager info on IBM.com](#)

IBM Tivoli Storage Manager Suite for Unified Recovery helps clients get up and running fast, with simplified capacity-based licensing for Tivoli Storage Manager and popular agents. Users can deploy advanced agents for virtual environments, databases, email, and enterprise resource planning as needed, with no additional licensing costs.

Here are some quick Tivoli Storage Manager facts:

- *Simplify backup administration with advanced IBM Tivoli Storage Manager Operations Center dashboard and VMware vCenter plug-in*
- *Scale up to manage billions of objects per backup server, and scale down to support entry-level environments*
- *Reduce backup infrastructure costs up to 38 percent with proven efficiency capabilities built in*

- *Optimize data protection for virtual environments, core applications, remote facilities, and critical workstations*
- *Protect data with built-in multi-site replication and flexible restore capabilities.*

Tivoli Storage Manager for Virtual Environments

IBM Tivoli Storage Manager for Virtual Environments provides an effective solution to this challenge. With it, the burden of running backups on a virtual machine is eliminated by offloading backup workloads from a VMware ESX or ESXi-based server to a centralized vStorage backup server. The vStorage backup server, which itself may be run from within a virtual machine, takes full and incremental snapshots of virtual machines, processes backups without the disruption and overhead

MORE ON THE WEB

- [Tivoli Storage Manager for Virtual Environments assets on PartnerWorld](#)
- [Tivoli Storage Manager for Virtual Environments info on IBM.com](#)

of running backup tasks from within each virtual machine, and sends the results to an IBM Tivoli Storage Manager (v5.5 or higher) server for management and distribution to the organization's backup storage pool.

Tivoli Storage Productivity Center

Tivoli Storage Productivity Center is a comprehensive, end-to-end storage infrastructure management solution that provides an easy-to-use, next-generation user interface that monitors, reports, and manages storage capacity, performance, devices, and replication services.

Tivoli Storage Productivity Center provides a single point of control that helps administrators manage every aspect of the storage infrastructure—between the hosts, through the fabric, and down to the physical disks—across multi-site storage environments.

Here are some quick Tivoli Storage Productivity Center facts:

- *Provide comprehensive visibility, control, and automation for heterogeneous storage environments*

MORE ON THE WEB

- [Tivoli Productivity Center assets on PartnerWorld](#)
- [Tivoli Productivity Center info on IBM.com](#)
- [Tivoli Productivity Center Information Center](#)

- *Simplify provisioning by using intelligent presets and integrated best practices*
- *Enable context-sensitive performance management from within the storage management graphical user interface (GUI)*
- *Simplify data replication for copy management and disaster recovery*
- *Improve consistency and control for basic configuration and operations of storage systems, devices, and storage area network (SAN) fabrics.*

Tivoli Storage FlashCopy Manager

IBM Tivoli Storage FlashCopy Manager delivers high levels of protection for key applications and databases using integrated application-aware snapshot backup and restore capabilities. Tivoli Storage FlashCopy Manager is designed to easily integrate with numerous software and

MORE ON THE WEB

- [Tivoli Storage FlashCopy Manager assets on PartnerWorld](#)
- [Tivoli Storage FlashCopy Manager info on IBM.com](#)

storage system snapshot technologies to help create a high-performance, low-impact solution for advanced data protection.

Here are some quick Tivoli Storage FlashCopy manager facts:

- *Protect data with an easy-to-install, quick-to-deploy storage snapshot solution*
- *Improve application availability and service levels with high-performance, near-instant restore capabilities that help reduce downtime*
- *Simplify database cloning to support uses outside of backup and recovery*
- *Use as a standalone solution or integrate easily with IBM Tivoli Storage Manager, IBM Metro Mirror, and IBM Global Mirror*
- *Support a wide range of applications, operating systems, and storage devices.*

Tivoli Storage Manager Fastback

IBM Tivoli Storage Manager FastBack is a smarter data protection and near-instant recovery software solution for business-critical Windows and Linux servers, in data centers, remote offices, and small- to mid-size enterprises. Tivoli Storage Manager FastBack helps clients eliminate backup windows, reduce the amount of data at risk between backups to almost zero, and reduce the time to recover from almost any data loss.

Here are some quick Tivoli Storage Manager FastBack facts:

- *Helps provide continuous data protection and recovery management for Microsoft Windows and Linux servers, both in the data center and in remote or branch offices*
- *Gets applications and users back up and running within minutes following any data loss, while full data recovery is performed in the background*
- *Helps eliminate the need for traditional backup windows by continuously capturing data changes at the block level*

MORE ON THE WEB

- [Tivoli Storage Manager FatBack assets on PartnerWorld](#)
- [Tivoli Storage Manager FastBack info on IBM.com](#)

- *Helps reduce storage and bandwidth requirements with block-level incremental backup and integrated data deduplication*
- *Schedules automated data transfers for disaster recovery based on flexible, policy-based settings.*

Storage and Data Services

As the volume of data grows continuously, you may need help storing and managing data for effective decision-making. IBM provides storage and data services that can help address your storage infrastructure needs, including assessment, planning, design, implementation and management. With our storage expertise, time-tested methodologies and effective tools, we can help support your current

and future storage and data requirements, while helping you achieve better business performance.

We can help enable business growth and innovation with more efficient storage and data services. Our feature-rich services help address your storage needs by proactively establishing a well-organized approach to your storage and data environment. Realize the benefits of an effective storage and information infrastructure by simplifying management of your storage and data environment. With our services, you can gain insight into how your business is using existing storage assets.

MORE ON THE WEB

- [Storage and data services info on IBM.com](#)

We can provide a robust storage infrastructure as well as help improve the value of key data by reducing storage risks considerably.

Systems Lab Services and Training—Storage Consulting Services

IBM Systems Lab Services and Training infuses intelligence into how global information technology works. We help drive down costs by designing flexible infrastructures and better manage risk with advanced technical skills and our experience. We help optimize data center utilization and system solutions. We introduce innovative technologies as they emerge from IBM product development labs, as well as deliver the training needed to best use them.

Leverage our experience and knowledge to address the challenges of demands for service, inflexible infrastructures, tight budgets, and incomplete or unreliable data. We collaborate with IBM service organizations like Global Technology Services, Global Business Services, Sales and Distribution, Software Group, as well as IBM Business Partners.

Systems Lab Services and Training offers assistance to IBM Business Partners worldwide, delivering leading edge service and training to accelerate the adoption of IBM technologies. Working together, we can help:

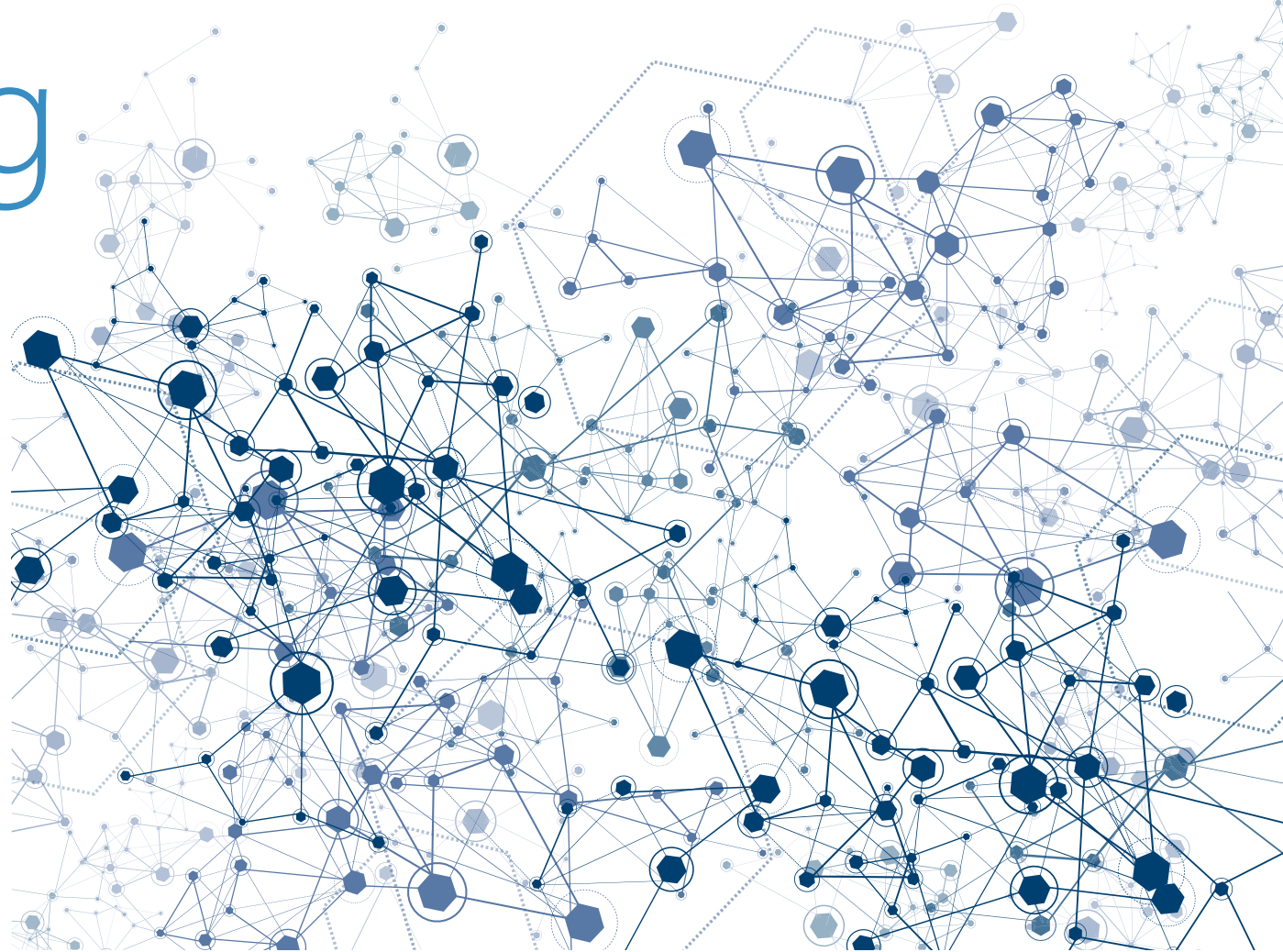
- *Grow sales and increase profits*
- *Improve client satisfaction and business scope*
- *Compete for more strategic opportunities and pursue larger clients*
- *Reduce risks working with new technologies*
- *Gain essential technical skills and expertise.*

MORE ON THE WEB

- [Storage services info on IBM.com](#)

System Networking and SAN

In this chapter, we will explore the IBM System Networking portfolio, which includes advanced networking software and high performance switching hardware.



IBM System Networking

IBM System Networking enables an open approach to data center networking, ensuring that clients can implement smarter computing solutions using best-in-class networking equipment.

MORE ON THE WEB

- [Overview of all IBM System Networking on IBM.com](#)

IBM Software Defined Network for Virtual Environments

Data center networks today need to be agile and responsive while supporting a huge growth in data, the number of devices attaching to their network, and the mobility of an increasing number of users. Advances in virtualization are moving toward a software defined model where compute, storage, and network resources are provisioned at the request of applications and guided by orchestration managers. IBM is focusing on developing technologies that will help our clients build a Software Defined Environment

MORE ON THE WEB

- [IBM SDN VE specifications](#)
- [IBM SDN VE assets on PartnerWorld](#)
- [IBM SDN VE info on IBM.com](#)

(SDE) that optimizes their IT infrastructure and increases automation.

One proof point is IBM SDN for Virtual Environments, which creates a more responsive network infrastructure by creating virtual networks for dynamic workloads. This virtual network is isolated from the physical network much like a virtual machine is isolated from its host server hardware. IBM SDN for Virtual Environments includes a rich set of APIs for easy integration with orchestration managers. This approach provides several advantages:

- *Virtual networks can be created without any changes to the existing network*
- *Provisioning and administration can be automated and simplified*
- *IP and MAC addresses can be reused permitting logical separation of networks for multi-tenancy.*

IBM RackSwitch Portfolio

Data centers can standardize on a unified and affordable rack-level, or top of rack, network infrastructure to provision and scale out Web 2.0 environments, high-performance clusters, and virtualized data centers. IBM's Ethernet RackSwitch family is designed to bring speed and intelligence to the edge of your network; where it's closer to your business, users, and innovations. IBM's top of rack products are lossless, low latency, and low power.

MORE ON THE WEB

- [System Networking RackSwitch Sales Kit](#)
- [System Networking RackSwitch info on IBM.com](#)

RackSwitch G7028

The IBM System Networking RackSwitch G7028 is an entry level enterprise-class 1 GbE switch designed for the data center. The G7028 offers 24 1 GbE RJ45 ports in addition to four 10 GbE SFP+ ports in a 1U form factor. The G7028 provides low power consumption with only 45 W. It is available with rear to front airflow, match-



ing most servers and storage airflow, which allows clients to maximize hot and cold aisle designs for lower operational costs. For clients looking for higher availability, an optional external redundant power supply option is available and can support up to four RackSwitch G7028s.

The RackSwitch G7028 is designed with exceptional performance in mind and provides non-blocking, wire-speed switching with cut-through architecture. The G7028 is ideal for clients looking for cost-effective 1 Gb Ethernet Layer 2 switching solutions with the ability to easily transition to 10 Gb Ethernet.

Here are some quick G7028 facts:

- *24 × 1 Gigabit Ethernet (GbE) RJ45 ports and four standard 10 GbE SFP+ ports*
- *Rear to front airflow direction, with I/O ports facing the hot-aisle, allowing for significant savings in cooling costs*
- *Low 45 W power rating helps reduce power consumption*

MORE ON THE WEB

- [G7028 assets on PartnerWorld](#)
- [G7028 info on IBM.com](#)

- *Optional external redundant power supply available*
- *Ideal for clients looking for cost-effective 1 Gb Ethernet Layer 2 switching solutions.*

RackSwitch G8000

The IBM System Networking RackSwitch G8000 is an Ethernet switch specifically designed for the data center, providing a virtualized, cooler, and simpler network solution.

The G8000 is virtualized—for the first time providing rack-level virtualization of networking interfaces for a rack full of server and storage systems—decoupling the scaling of networking and computing capacity via on-switch VMready software. VMready enables the movement of virtual machines—providing matching movement of VLAN assignments, ACLs, and other networking and security set-



tings. VMready works with all leading VM providers.

The G8000 is cooler—implementing a choice of directional cooling options to maximize data center layout and provisioning. Its superior airflow design complements the hot-aisle and cold-aisle data center cooling model.

Here are some quick G8000 facts:

- *44 x 1 GbE RJ45 ports, four 1 GbE SFP ports, and up to four optional 10 GbE SFP+ or CX4 ports*
- *Low 120 W power draw and variable speed fans help reduce power consumption*
- *Network virtualization—IBM VMready automatically detects virtual machine movement from one physical server to another.*

MORE ON THE WEB

- [G8000 assets on PartnerWorld](#)
- [G8000 info on IBM.com](#)

RackSwitch G8052

The IBM System Networking RackSwitch G8052 is an Ethernet switch specifically designed for the data center, providing a virtualized, cool, and easy network solution.

The RackSwitch G8052 is virtualized—supporting IBM VMready technology, an innovative, standards-based solution to manage virtual machines (VMs) in small to large-scale data center and cloud environments. VMready works with all leading VM providers.

The RackSwitch G8052 is cool—implementing a choice of directional cooling to maximize data center layout and provisioning. Its superior airflow design complements the hot-aisle and cold-aisle data center cooling model.

The RackSwitch G8052 is easy—with server-oriented provisioning via point-and-click management interfaces, along with the optional System Networking



MORE ON THE WEB

- [G8052 assets on PartnerWorld](#)
- [G8052 info on IBM.com](#)

Switch Center software package for updating large groups of switches.

Here are some quick G8052 facts:

- *48 × 1 GbE RJ45 ports and 4 standard 10 GbE SFP+ ports*
- *Choice of airflow direction, allowing for significant savings in cooling costs*
- *Low 130 W power rating and variable speed fans help reduce power consumption*
- *Network virtualization—VMready automatically detects virtual machine movement from one physical server to another.*

RackSwitch G8124E

The IBM RackSwitch G8124E is a 10 Gigabit Ethernet switch specifically designed for the data center, providing a virtualized, cooler, and easier network solution. The G8124E offers 24 10 Gigabit Ethernet ports in a high-density, 1U footprint. Designed with top performance in mind,



the RackSwitch G8124E provides line-rate, high-bandwidth switching, filtering and traffic queuing without delaying data, and large data-center grade buffers to keep traffic moving.

The G8124E is virtualized—providing rack-level virtualization of networking interfaces. VMready software enables movement of virtual machines—providing matching movement of VLAN assignments, ACLs, and other networking and security settings. VMready works with all leading VM providers, such as VMware, KVM, Citrix, Xen, IBM PowerVM, and Microsoft Hyper-V. The G8124E also supports Virtual Fabric, which allows for the carving up of a physical NIC into 2–8 virtual NICs (vNICs) and creates a virtual pipe between the adapter and the switch (us-

MORE ON THE WEB

- [G8124E assets on PartnerWorld](#)
- [G8124E info on IBM.com](#)

ing the IBM Networking OS) for improved performance, availability, and security, while reducing cost and complexity.

Here are some quick G8124E facts:

- *Twenty-four SFP+ ports that operate at 10 Gigabit or 1 Gigabit Ethernet speeds*
- *Optimal for high-performance computing and applications requiring high bandwidth and low latency*
- *All ports are nonblocking 10 Gigabit Ethernet with deterministic latency of 570 nanoseconds*
- *IBM VMready helps reduce configuration complexity and improves security levels in virtualized environments*
- *Virtual Fabric capability allows for the carving up of a physical NIC into multiple virtual NICs.*

RackSwitch G8264

Built with top performance in mind, the IBM RackSwitch G8264 is ideal for today's big data, cloud, and optimized workloads. It is an enterprise-class and full-featured data-center switch that delivers linerate, high-bandwidth switching, filtering, and traffic queuing without delaying data.



Large data-center grade buffers keep traffic moving. Redundant power and fans along with numerous high availability features equip the switch for business-sensitive traffic. The G8264 supports IBM VMready technology, an innovative, standards-based solution to manage virtual machines (VMs) in small to large-scale data center and cloud environments.

The RackSwitch G8264 is ideal for latency-sensitive applications such as high performance computing clusters and financial applications and is a key piece when connecting multiple chassis together with Pure System Solutions. The G8264 supports stacking for up to eight switches for simplified switch management as well as IBM Virtual Fabric to enable clients to diminish the number of I/O adapters by

MORE ON THE WEB

- [G8264 assets on PartnerWorld](#)
- [G8264 info on IBM.com](#)

creating virtual NICs out of a 10 Gb adapter, helping reduce cost and complexity. The G8264 supports the newest protocols—including Data Center Bridging/ Converged Enhanced Ethernet (DCB/C EE) for support of Fibre Channel over Ethernet (FCoE), in addition to iSCSI and NAS.

Here are some quick G8264 facts:

- *Optimized for applications requiring high bandwidth and low latency*
- *Supports Virtual Fabric and OpenFlow*
- *Up to 64 10 Gb SFP+ ports in a 1U form factor*
- *Future-proofed with four 40 Gb QSFP+ ports*
- *Stacking—A single switch image and configuration file can be used for up to eight switches, sharing only one IP address and one management interface.*

RackSwitch G8264T

The IBM RackSwitch G8264T is ideal for clients looking to expand into 10 Gb environments without compromising their data center's overall TCO. It provides flexible connectivity for high-speed server and storage devices across distances up to 100m at a low cost.



The G8264T is an enterprise-class and full-featured data center switch that delivers line-rate, high-bandwidth switching, filtering, and traffic queuing without delaying data. Large data-center grade buffers keep traffic moving. Redundant power and fans along with numerous high availability features equip the switch for business-sensitive traffic. The G8264T supports IBM VMready technology, an innovative, standards-based solution to manage virtual machines (VMs) in small to large-scale data center and cloud environments.

Here are some quick G8264T facts:

- *Forty-eight 10GBase-T/1000Base-T RJ45 connections plus four 40 Gb QSFP+ connections in a 1U form factor*

MORE ON THE WEB

- [G8264T assets on PartnerWorld](#)
- [G8264T info on IBM.com](#)

- *Flexible and low-cost connectivity option for 10 Gb environments supporting distances up to 100 meters*
- *Supports OpenFlow and IBM VMready.*

RackSwitch G8264CS

Built with top performance and convergence in mind, the IBM RackSwitch G8264CS is ideal for today's big data, cloud, and optimized workloads looking to exploit the advantages of Fibre Channel over Ethernet (FCoE) today or in the future. It is an enterprise-class and full-featured data center switch that delivers line-rate, high-bandwidth switching, filtering, and traffic queuing without delaying data. Large data-center grade buffers keep traffic moving. Redundant power and fans along with numerous high availability features equip the switch for business-sensitive traffic. The G8264CS supports IBM VMready technology, an innovative, standards-based solution to manage virtual machines (VMs) in small



MORE ON THE WEB

- [G8264CS assets on PartnerWorld](#)
- [G8264CS info on IBM.com](#)

to large-scale data center and cloud environments.

The IBM RackSwitch G8264CS also simplifies deployment with its innovative IBM Omni Port technology. Omni Ports give clients the flexibility to choose 10 Gb Ethernet, 4/8 Gb Fibre Channel, or both for upstream connections, and in FC mode. Omni Ports provide convenient access to FC storage. G8264CS's Omni Port technology helps consolidate enterprise storage, networking, data, and management onto a simple to manage single fabric and reduces costs associated with energy and cooling, management and maintenance, and capital costs.

Here are some quick GS8264CS facts:

- *Lossless Ethernet, Fibre Channel, and Fibre Channel over Ethernet (FCoE) in one switch*

- *Extreme flexibility with IBM Omni Ports that support 10 Gb Ethernet and/or 4/8 Gb Fibre Channel*
- *Ideal for clients looking to aggregate FC/FCoE converged traffic with ability to connect to existing SANs*
- *Proven IBM end-to-end convergence testing delivering easy interoperability throughout network.*

RackSwitch G8316

The IBM System Networking RackSwitch G8316 is a 40 Gigabit Ethernet (GbE) aggregation switch designed for the data center, providing speed, intelligence, and interoperability on a proven platform.

The RackSwitch G8316 offers up to 16x40 GbE ports, which can also be used as a high-density 10 GbE switch, with 1.28 Tbps—in a 1U footprint. The G8316 provides a cost-efficient way to aggregate multiple racks of servers compared to other expensive core switches, while al-



MORE ON THE WEB

- [G8316 assets on PartnerWorld](#)
- [G8316 info on IBM.com](#)

lowing massive scalability for your data center network. It is an ideal aggregation layer switch when used with the 10/40 GbE RackSwitch G8264 at the access layer.

Here are some quick G8316 facts:

- *Optimized for applications requiring high bandwidth and low latency*
- *Sixteen 40 Gb QSFP+ ports in a 1U form factor*
- *Up to 64 10 Gb SFP+ ports to form a high-density 10 Gb cluster*
- *Powerful control plane providing higher performance to aggregate multiple racks of servers*
- *1.28 Tbps non-blocking throughput.*

RackSwitch G8332

Built with top performance in mind, the IBM RackSwitch G8332 is ideal for today's big data, cloud, and optimized workloads. It is an enterprise-class; full-featured L2 and L3 data center switch that delivers

linerate, high-bandwidth switching, filtering, and traffic queuing without delaying data. Large data-center grade buffers keep traffic moving. Redundant power and fans along with numerous high availability features equip the switch for business-sensitive traffic. The RackSwitch G8332 supports 32 QSFP+ ports and is suitable for clients using 10 Gigabit Ethernet (GbE) or 40 GbE connectivity (or both).

The G8332 provides ultra-low latency and high performance with 2.56 Tbps throughput. This makes the high-density switch an ideal solution for latency-sensitive applications such as high performance computing, financial applications, hosting environments, and Cloud Designs in Enterprise, Web 2.0 and virtualized data centers. The G8332 also supports IBM



VMready with Virtual Vision technology, an innovative, standards-based solution to manage virtual machines (VMs) in small to large-scale data center and cloud environments. In addition, the G8332 supports key SDN features such as OpenFlow and overlay networks that help in virtualizing networks without changing the physical networking infrastructure and simplifying and automating network provisioning.

Here are some quick G8332 facts:

- *Thirty-two 40 Gb QSFP+ ports in a 1U form factor*
- *Purpose-built for applications requiring high bandwidth and ultra-low latency*
- *Support for advanced features like Network Address Translation (NAT), Precision Timing (PTP) and Software Defined Networking (SDN) features such as OpenFlow and Software Defined Networking for Virtual Environments (SDN VE) gateway.*

MORE ON THE WEB

- [G8332 assets on PartnerWorld](#)
- [G8332 info on IBM.com](#)

IBM Flex System Fabric

IBM can help you reduce cost, complexity, and risk with IBM Flex System Fabric—a portfolio of high performance networking products that can help simplify connectivity of your data and storage infrastructure. The portfolio includes support for Ethernet, Fibre Channel over Ethernet (FCoE), and even Fibre Channel protocols. Flex System Fabric also supports extraordinary convergence of NAS, iSCSI, and even FCoE where the Fibre Channel can be broken out directly in the chassis or upstream in the network. The portfolio offers easy standards-based interoperability with your existing networking environment, including Cisco, Brocade, Juniper, and other networking infrastructures.

MORE ON THE WEB

- [Flex System Fabric](#)

SI4093 System Interconnect Module

The IBM Flex System Fabric SI4093 System Interconnect Module enables a simplified

integration of the IBM Flex System into your existing networking infrastructure. The default configuration of the SI4093 requires no management for most data center environments, eliminating the need to configure each device or individual ports, thus reducing the number of management points.

The device provides a low latency, loop-free interface that does not rely upon spanning tree protocols, thereby removing one of the greatest deployment and management complexities of a traditional switch. The SI4093 offers administrators a simplified deployment experience while maintaining the performance of intra-chassis connectivity, yet provides the simplicity of a single aggregated connection to the upstream network.



Here are some quick SI4093 facts:

- *Preconfigured device designed for easy network connectivity to reduce deployment time*

MORE ON THE WEB

- [SI4093 System Interconnect Module assets on PartnerWorld](#)
- [SI4093 System Interconnect Module info on IBM.com](#)

- *Reduces management complexity without compromising performance*
- *Investment protection with “pay-as-you-grow” scalability with the ability to turn on additional 10 Gb or 40 Gb ports*
- *Flexible port mapping allows clients to dynamically configure active ports*
- *Easy interoperability with multi-vendor network infrastructures—no change to existing network*
- *Reduce networking CAPEX by up to 60 percent when compared with a pass-thru module*
- *Designed for Fibre Channel over Ethernet (FCoE) as a transit device, where FC is broken out further upstream in the network.*

EN4093R 10 Gb Scalable Switch

The IBM Flex System Fabric EN4093R 10 Gb Scalable Switch provides unmatched scalability and performance, while also

delivering innovations to help address a number of networking concerns today and providing capabilities that will help you prepare for the future.

With the growth of virtualization and the evolution of cloud, many of today’s applications require low latency and high bandwidth performance. To enable integration into the higher bandwidth networks supporting cloud services, the industry-leading EN4093R is the first blade switch to feature 40 Gb external ports. Additionally, the Flex System Fabric EN4093R is the first blade switch to support sub-microsecond latency, while also delivering full line-rate performance of up to 1.28 Tbps, making it ideal for managing dynamic workloads across your network.



Here are some quick EN4093R 10 Gb Scalable Switch facts:

- *“Pay-as-you-grow” scalability with the ability to turn on additional 10 Gb or 40 Gb ports*

MORE ON THE WEB

- [EN4093R 10 Gb Scalable Switch assets on PartnerWorld](#)
- [EN4093R 10 Gb Scalable Switch info on IBM.com](#)

- *Flexible port mapping allows clients to dynamically configure active ports*
- *Reduces cost and complexity via network convergence, stacking, and Virtual Fabric*
- *Performance and low latency with 1.28 Tbps and less than 1 microsecond latency*
- *Investment protection when migrating from 1 Gb to 10 Gb and to a converged network*
- *Designed for Fibre Channel over Ethernet (FCoE) as a transit switch, where FC is broken out further upstream in the network.*

CN4093 10 Gb Converged Switch

Many clients today are connecting Ethernet and Fibre Channel from their servers into their data and storage networks. As a result, IT organizations are looking for ways to reduce the cost and complexity of these environments by leveraging the

capabilities that exist today with 10/40 Gb Ethernet and/or 8 Gb Fibre Channel. Some solutions require a complete rip-n-replace of existing infrastructure.

The IBM Flex System Fabric CN4093 10 Gb Converged Scalable Switch is an ideal solution for clients with these concerns because it can fit into their existing infrastructure and offers the benefits of a converged infrastructure today, plus it can scale with their needs in the future. The CN4093 supports multiple protocols like Ethernet, FCoE, FC, and iSCSI. With multi-protocol support it can connect directly to the IBM integrated storage node, offering an integrated solution that is easy to setup and manage or to an external SAN.



Here are some quick CN4093 facts:

- 10 Gb Ethernet, Fibre Channel, and Fibre Channel over Ethernet (FCoE) in one module
- OmniPorts offer extreme flexibility, connecting 10 Gb Ethernet and/or 8 Gb Fibre Channel

MORE ON THE WEB

- [CN4093 10 Gb Converged Scalable Switch assets on PartnerWorld](#)
- [CN4093 10 Gb Converged Scalable Switch info on IBM.com](#)

- *“Pay-as-you-grow” scalability with the ability to turn on additional internal and external uplink ports*
- *Flexible port mapping allows clients to dynamically configure active ports*
- *Full Fibre Channel fabric service with easy connectivity to IBM storage nodes or SANs*
- *Ability to configure in easy connect mode for transparent connectivity to your existing LAN and SAN*
- *High performance (up to 1.28 Tbps) and low latency.*

EN2092 1 Gb Ethernet Scalable Switch

The IBM Flex System EN2092 1 Gb Ethernet Scalable switch provides outstanding flexibility, allowing you to buy one today and enhance its functionality in the future. The scalable architecture allows you to support 2-port or 4-port 1 Gb adapters



with only a pair of EN2092s. The EN2092 supports up to 28 x 1 Gb internal ports, plus up to 20 x 1 Gb and four 10 Gb external ports. Designed with top performance in mind, the EN2092 provides high availability with legendary IBM quality and switch failover capability.

This switch is an exceptionally flexible integrated switch with extreme scalability and performance, while also delivering best-in-class networking innovations to help you address today's networking requirements. It also provides advanced capabilities to address future needs.

Here are some quick 1 Gb Scalable Switch facts:

- *“Pay-as-you-grow” scalability and investment protection with the ability to turn on additional 1 Gb ports or 10 Gb capacity*
- *Flexible port mapping allows clients to dynamically configure active ports*

MORE ON THE WEB

- [EN2092 1 Gb assets on PartnerWorld](#)
- [EN2092 1 Gb Scalable Switch info on IBM.com](#)

- *Simpler management with innovative IBM VMready virtualization-aware networking for automated Virtual Machine mobility*
- *Industry-proven Layer 2 and Layer 3 networking features.*

EN4091 10 Gb Ethernet Pass-Thru

The network architecture on the IBM Flex System platform has been specifically designed to address these challenges, giving you a very scalable way to integrate, optimize and automate your data center. The Flex System EN4091 10 Gb Ethernet Pass-Thru Module offers easy connectivity of the Flex System Chassis to any external network infrastructure.



This unmanaged device enables direct connectivity of the compute node in the chassis to an external top-of-rack data center switch. This module can function at both 1 Gb and 10 Gb. It has 14 internal 10 Gb links, and 14 external 10 Gb SFP+ uplinks.

Here are some quick EN4091 10 Gb Ethernet Pass-Thru Module facts:

- *Offers easy connectivity of the Flex System Chassis to any external network infrastructure*
- *Enables direct connectivity of the compute node in the chassis to an external top-of-rack data center switch*
- *Can function at both 1 Gb and 10 Gb*
- *Provides 14 internal 10 Gb links, and 14 external 10 Gb SFP+ uplinks.*

MORE ON THE WEB

- [EN4091 10 Gb assets on PartnerWorld](#)
- [EN4091 10 Gb info on IBM.com](#)

SAN Fabric

To stay competitive in the global marketplace, your people need to have access to

MORE ON THE WEB

- [SAN Fabric info on IBM.com](#)

the right information at the right time in order to be effective, creative, and highly innovative. IBM offers a comprehensive portfolio of SAN switches, storage, software, services, and solutions to reliably bring information to people in a cost effective way. IBM provides flexible, scalable, and open standards-based business-class and global enterprise-class storage networking solutions for the on demand world.

In this section, we look at these SAN fabric products. IBM SAN products and solutions provide integrated SMB and enterprise SAN solutions with multiple local, campus, metropolitan, and global storage networking options.

SAN Fabric for Entry-Level Workloads

Here is a list of SAN fabric products designed for entry-level workloads. Click on the links and you will jump to the section of this ebook that describes the product.

MORE ON THE WEB

- [SAN fabric for entry-level workloads](#)

- [SAN24B-5](#)
- [SAN24B-4 Express](#)
- [Cisco MDS 9124 Express](#)
- [Cisco 9148](#)

SAN Fabric for Mid-Size Workloads

Here is a list of SAN fabric products designed for mid-size workloads. Click on the links and you will jump to the section of this ebook that describes the product.

- [SAN48B-5](#)
- [SAN80B-4](#)
- [SAN96B-5](#)
- [Cisco MDS 9148](#)

MORE ON THE WEB

- [SAN fabric for mid-size workloads](#)

SAN Fabric for Enterprise Workloads

Here is a list of SAN fabric products designed for large enterprise workloads. Click on the links and you will jump to the section of this ebook that describes the product.

- [SAN384B-2 and SAN768B-2](#)
- [Cisco MDS 9500 series Multilayer Directors](#)
- [Cisco MDS 9710 Multilayer Director](#)

MORE ON THE WEB

- [SAN fabric for enterprise workloads](#)

SAN Specialty Switches

We also offer the following SAN Specialty Switches. These SAN specialty switches deliver capabilities ranging from connecting heterogeneous SAN fabrics, to enabling distance extension using Fibre Channel over IP, to converging SAN and Ethernet traffic on a single platform. Click on the links and you will jump to the section of this ebook that describes the product.

MORE ON THE WEB

- [SAN specialty switches](#)

- [SAN06B-R](#)
- [SAN32B-E4](#)
- [Brocade VDX 6730 Converged Switch](#)
- [Cisco MDS 9222i](#)
- [Cisco MDS 9250i](#)

SAN b-type Switches

The IBM System Storage SAN b-type family provides entry, midrange, and specialty switches and enterprise directors.

SAN24B-4 Express

The IBM System Storage SAN24B-4 Express fabric switch is designed specifically to address the needs of small- to medium-sized storage area network (SAN) environments. It can be used to create a wide range of high-performance SAN solutions, from simple, single-switch configurations to larger, multi-switch configurations that support fabric connectivity and advanced business continuity capa-

bilities. Infrastructure simplification solutions for IBM System x, IBM BladeCenter, and IBM Power Systems servers include storage consolidation and high availability server clustering with System Storage disk storage arrays. Business continuity solutions include data protection with System Storage tape libraries and devices and IBM Tivoli Storage Manager data protection software.

Here are some quick SAN24B-4 Express facts:

- *Benefit from easy-to-install and easy-to-use features designed specifically for small- to medium-size environments*
- *Reach new performance levels with 8 Gbps Fibre Channel technology*
- *Scales from 8 to 16 to 24 ports with Ports on Demand*
- *Protects existing 4, 2, and 1 Gbps infrastructure investments while positioning for future technologies*

MORE ON THE WEB

- [SAN24B-4 Express assets on PartnerWorld](#)
- [SAN24B-4 Express info on IBM.com](#)



- *Use as the foundation for new infrastructure simplification and business continuity solutions for servers running Microsoft Windows, UNIX, Linux, and IBM AIX and OS/400 operating systems.*

SAN24B-5

The IBM System Networking SAN24B-5 switch is designed to provide outstanding price to performance value, combining flexibility, simplicity, Gen 5 Fibre Channel technology, and enterprise-class functionality in an entry-level switch. SAN24B-5 is configurable in 12 or 24 ports and supports 2, 4, 8, or 16 Gbps speeds in an efficiently designed 1U form factor. The base unit includes one (249824G/2498-X24) or two (2498-F24) integrated power supplies and fans. A second power supply provides additional redundancy for increased resiliency.



MORE ON THE WEB

- [SAN24B-5 assets on PartnerWorld](#)
- [SAN24B-5 info on IBM.com](#)

SAN24B-5 provides a critical building block for today's highly virtualized, private cloud storage environments. It can simplify server virtualization and virtual desktop infrastructure management while meeting the high-throughput demands of solid-state disks. It can also help minimize downtime in mission-critical environments by delivering high reliability, availability, and serviceability.

Here are some quick SAN24B-5 facts:

- *Gain flexibility, simplicity, and enterprise-class functionality in a 24-port, 1U form factor, entry-level switch*
- *Scales up to 24 ports using ports-on-demand capabilities*
- *Simplifies management with Fabric Vision technology, which helps reduce operational costs and optimize application performance*

- Maximizes resiliency with nondisruptive software upgrades and redundant power supply
- Helps boost performance with dynamic fabric provisioning, critical monitoring, and advanced diagnostics, including ClearLink diagnostic technology (D_Ports)
- Leverages dual functionality as either a full-fabric SAN switch or an N_Port ID virtualization (NPIV) gateway.

SAN48B-5

The IBM System Storage SAN48B-5 switch is designed to meet the demands of hyper-scale private or hybrid cloud storage environments by delivering Gen 5 Fibre Channel technology and capabilities with 16 Gbps performance that supports highly virtualized environments.

To enable greater flexibility and investment protection, SAN48B-5 is configurable in 24, 36, or 48 ports and supports 2, 4, 8, 10, or 16 Gbps speeds in an efficiently designed 1U package. This switch—now enhanced with enterprise connectivity options that add support for IBM FICON connectivity—can provide a



highly reliable infrastructure when used with fast, scalable IBM System z servers.

Here are some quick SAN48B-5 facts:

- Gain greater flexibility for diverse deployment strategies with the Gen 5 Fibre Channel switch, which delivers 16 Gbps performance with up to 48 ports in an energy-efficient, 1U form factor
- Leverages Ports on Demand (PoD) capabilities to achieve fast, easy, and cost-effective scaling from 24 to 48 ports in 12-port increments
- Simplifies management with Fabric Vision technology, which helps reduce operational costs and optimize application performance
- Maximizes availability with nondisruptive software upgrades and redundant, hot-pluggable components.

MORE ON THE WEB

- [SAN48B-5 assets on PartnerWorld](#)
- [SAN48B-5 info on IBM.com](#)

SAN96B-5

The IBM System Networking SAN96B-5 switch is a high-density, purpose-built, foundational building block for large and growing storage area network (SAN) infrastructures.

It is designed to provide highly resilient, scalable, and simplified network infrastructure for storage. By delivering market-leading, Gen 5 Fibre Channel technology and capabilities with 16 Gbps performance, SAN96B-5 meets the demands of growing, dynamic workloads; evolving, virtualized data centers; and highly virtualized private and hybrid cloud storage environments.

Here are some quick SAN96B-5 facts:

- Supports virtualized private and hybrid cloud storage environments and data center consolidation with high scalability in an ultra-dense, Gen 5 Fibre Channel 96-port switch



MORE ON THE WEB

- [SAN96B-5 assets on PartnerWorld](#)
- [SAN96B-5 info on IBM.com](#)

- *Enables “pay-as-you-grow” flexibility using the Ports on Demand feature with speeds up to 16 Gbps*
- *Simplifies management with Fabric Vision technology, which helps reduce operational costs and optimize application performance*
- *Provides data center-to-data center security and bandwidth savings with up to eight in-flight encryption and compression ports*
- *Helps maximize application uptime and performance while reducing expenses with ClearLink diagnostic technology (D_Ports).*

b-type Specialty Switches

In this section, we will explore b-type specialty switches.

SAN06B-R

The IBM System Storage SAN06B-R extension switch leverages advanced Fibre

Channel and Fibre Channel over IP (FCIP) technology to provide a fast, highly reliable, cost-effective network infrastructure for remote data replication, backup, and migration.

Whether configured for simple point-to-point or comprehensive multi-site SAN extension, the SAN06B-R extension switch addresses the most demanding business continuity, compliance, and global data access requirements. Up to 16 8 Gbps Fibre Channel ports and six 1 Gigabit Ethernet (GbE) ports provide the Fibre Channel and FCIP bandwidth, port density, and throughput required to help maximize application performance over WAN links.

Here are some quick SAN06B-R facts:

- *Enables fast, reliable, and cost-effective remote data replication, backup, and migration*
- *Reduces operational costs, maximize uptime, and optimize application performance*



MORE ON THE WEB

- [SAN06B-R assets on PartnerWorld](#)
- [SAN06B-R info on IBM.com](#)

- *Maximizes replication, backup, and migration throughput over distance*
- *Enables consolidation while providing traffic isolation in mixed environments*
- *Boosts wide area network (WAN) link utilization and resiliency*
- *Expands flexibility to support a broad range of storage area network (SAN) extension requirements with an extensible hardware platform and flexible software licensing.*

SAN32B-E4

The IBM System Storage SAN32B-E4 Encryption Switch is a high-performance stand-alone device designed for protecting data-at-rest in mission-critical environments. In addition to helping IT organizations achieve compliance with regulatory mandates and meeting industry standards for data confidentiality, the SAN32B-E4 Encryption Switch also pro-

protects them against potential litigation and liability following a reported breach.

Data is one of the most highly valued resources in a competitive business environment. Protecting that data, controlling access to it, and verifying its authenticity while maintaining its availability are priorities in our security-conscious world. Increasing regulatory requirements are also helping to drive the need for the adequate security of data. Encryption is a powerful and widely used technology that helps protect data from loss and inadvertent or deliberate compromise.

In the context of data center fabric security, IBM provides advanced encryption services for storage area networks (SANs) with the IBM System Storage SAN32B-E4 Encryption Switch. The switch is a high-speed, highly reliable hardware device that delivers fabric-based encryption



MORE ON THE WEB

- [SAN32B-E4 specifications](#)
- [SAN32B-E4 assets on PartnerWorld](#)
- [SAN32B-E4 info on IBM.com](#)

services to protect data assets either selectively or on a comprehensive basis. The 8 Gbps SAN32B-E4 Fibre Channel Encryption Switch scales non-disruptively, providing from 48 up to 96 Gbps of encryption processing power to meet the needs of the most demanding environments with flexible, on-demand performance. It also provides compression services at speeds of up to 48 Gbps for tape storage systems. Moreover, it is tightly integrated with one of the industry-leading, enterprise-class key management systems, the IBM Tivoli Key Lifecycle Manager (TKLM), which can scale to support key life-cycle services across distributed environments.

Here are some quick SAN32B-E4 facts:

- *Enforces data confidentiality and privacy requirements using high-performance, scalable fabric-based encryption*

- *Centralizes administration of data-at-rest encryption services to ensure data protection on both disk and tape*
- *Reduces operational costs and simplifies management through the IBM Tivoli Key Lifecycle Manager solution*
- *Meets regulatory mandates for securing data while maintaining application performance with on-demand encryption and compression processing power*
- *Industry-standard AES-256 encryption algorithms for both disk and tape in a centralized security platform for SAN environments*
- *High-performance encryption processing at up to 96 Gbps to support heterogeneous enterprise data centers*
- *Plug-in encryption services available to all host servers, including virtual machines, attached to data center fabrics*
- *Frame redirection technology to enable easy, non-intrusive deployment of fabric-based security services.*

Brocade VDX 6730 Converged Switch

IBM is partnering with Brocade, an industry-leading SAN Switch provider, to deliver converged data center solutions. Con-



verging FC storage and regular Ethernet traffic on one platform allows administrators to reduce the number of adapters, simplify management, and protect storage investments by utilizing the existing SAN infrastructure.

IBM delivers interoperability by providing end-to-end FCoE testing with the latest System x servers, Brocade VDX 6730 Converged switches, IBM System Storage SAN b-type, and Brocade SAN switches and IBM Storage.

Here are some quick Brocade VDX 6730 facts:

- *10 Gigabit Ethernet (GbE) FCoE switch with LAN and native Fibre Channel ports*
- *Supports multiple protocols including Fibre Channel over Ethernet (FCoE), iSCSI and NAS*
- *Streamlines management by utilizing Brocade Network Advisor and available integration with IBM System Director*

MORE ON THE WEB

- [Brocade VDX 6730 specifications](#)
- [Brocade VDX 6730 assets on PartnerWorld](#)
- [Brocade VDX 6730 info on IBM.com](#)

- *Ideal for customers looking to connect to existing Brocade SANs.*

SAN b-type Directors

In this section, we will explore SAN b-type directors.

SAN384B-2 and SAN768B-2

IBM System Storage SAN768B-2 and SAN384B-2 fabric backbones are among the industry's most powerful Fibre Channel switching infrastructure offerings. They provide reliable, scalable, high-performance foundations for mission-critical storage.

These fabric backbones also offer enterprise connectivity options to add support for IBM FICON connectivity, delivering a high-performing and reliable FICON infrastructure with fast and scalable IBM System z servers.



Here are some quick SAN384B-2 and SAN768B-2 facts:

- *Unleashes the full potential of private or hybrid cloud storage with outstanding scalability, performance, and reliability*
- *Reduces network complexity, management, and costs with ultra-scale chassis connectivity*
- *Simplifies and centralizes end-to-end storage area network (SAN) management with Fabric Vision technology*
- *Protects investments in existing SAN fabrics and automation tools while reducing operational costs and minimizing business disruption*
- *Maximizes performance for I/O- and bandwidth-intensive applications*

MORE ON THE WEB

- [SAN384B-2/SAN768B-2 specifications](#)
- [SAN384B-2 assets on PartnerWorld](#)
- [SAN768B-2 assets on PartnerWorld](#)
- [SAN384B-2/SAN768B-2 info on IBM.com](#)

- *Optimizes data center connectivity over distance with integrated, high-performance metro and global connectivity.*

Cisco MDS

The Cisco MDS family provides a full suite of switches, directors, and specialty switches.

Cisco MDS 9148

The Cisco MDS 9148 for IBM System Storage Multilayer Fabric Switch (2417-C48) is designed to provide an affordable, highly capable, and scalable storage networking solution for small, midrange, and large enterprise customers. The switch provides line-rate 8 Gbps ports with high-performance, high-density, and enterprise-class availability. The switch is designed to offer outstanding value by providing flexibility,

high availability, security, and ease of use at an affordable price in a compact, one rack-unit (1RU) form factor. With the ability to expand from 16 to 48 ports in eight-port increments, the Cisco MDS 9148 can be used as the foundation for small, stand-alone SANs, as a top-of-rack switch, or as an edge switch in larger, core-edge storage area network (SAN) infrastructures.

The Cisco MDS 9148 Multilayer Fabric Switch is designed to support quick configuration with zero-touch plug-and-play features and task wizards that allow it to be deployed quickly and easily in networks of any size. Powered by Cisco MDS 9000 NX-OS Software, it includes advanced storage networking features and functions and is compatible with Cisco MDS 9000 Series Multilayer Directors and Switches, providing transparent, end-to-end service delivery in core-edge deployments.



MORE ON THE WEB

- [Cisco MDS 9148 specifications](#)
- [Cisco MDS 9148 assets on PartnerWorld](#)
- [Cisco MDS 9148 info on IBM.com](#)

Here are some fast Cisco MDS 9148 facts:

- *Extraordinary price/performance with up to 48 8 Gbps line rate ports in a compact 1 RU platform.*
- *Scales from 16 ports to 48 ports in eight-port increments.*
- *Redundant power supplies and fans and other availability features help minimize downtime and improve business resiliency.*
- *Built-in management, operational and configuration tools, and plug-and-play features support quick deployment and easy end-to-end SAN management.*
- *All-in-one licensing with no hidden charges.*

Cisco MDS 9250i

Cisco MDS 9250i Multiservice Fabric Switch for IBM System Storage is an optimized platform for deploying high-performance SAN extension solutions, distributed intelligent fabric services, and cost-effective



multiprotocol connectivity for open systems. With a compact form factor and advanced capabilities normally available only on director-class switches, MDS 9250i is an ideal solution for departmental and remote branch-office SANs as well as large-scale SANs in conjunction with the Cisco MDS 9710 Multilayer Director.

MDS 9250i offers up to 40 16-Gbps Fibre Channel ports, two 1/10-Gigabit Ethernet IP storage services ports and eight 10-Gigabit Ethernet Fibre Channel over Ethernet (FCoE) ports in a fixed, two-rack unit (2RU) form factor. MDS 9250i connects to existing native Fibre Channel networks, protecting current investments in storage networks.

Here are some fast Cisco MDS 9205i facts:

- *Provide 16-Gbps connectivity in a high-density Fibre Channel switch*
- *Enable storage area network (SAN) consolidation with integrated multiprotocol support*

MORE ON THE WEB

- [Cisco MDS 9205i assets on PartnerWorld](#)
- [Cisco MDS 9205i info on IBM.com](#)

- *Deliver high-performance Fibre Channel over IP (FCIP) and fast disaster recovery*
- *Support hardware-based virtual fabric isolation with virtual SANs (VSANs) and Fibre Channel routing with Inter-VSAN routing (IVR)*
- *Enable cost-effective, high-performing Fibre Channel and FCIP connectivity for open-systems*
- *Cisco Data Mobility Manager (DMM) as a distributed fabric service.*

Cisco MDS 9222i

A wide range of IBM System Storage medium-size and enterprise storage area network (SAN) IT simplification and business continuity solutions can be created with the Cisco MDS 9222i for IBM System Storage multiservice modular switch. Infrastructure simplification solutions for the IBM Power Systems, System i, System p, System x, and System z families of servers include storage consolidation and

high-availability server clustering with IBM System Storage disk storage arrays. Business continuity solutions include data protection with IBM System Storage tape libraries and devices and IBM Tivoli Storage Manager data protection software; and disaster protection with IBM System Storage disk metro and global mirroring disaster recovery solutions.

Here are some quick MDS 9222i facts:

- *Multiservice design for high performance business continuity solutions with Windows, UNIX, Linux, NetWare, IBM OS/400, and IBM z/OS servers*
- *Storage media encryption (SME) for secure encryption of data stored on heterogeneous tapes, virtual tape libraries, and disk arrays*
- *Cost-effective “green” switch design requires up to 27 percent less power per port*



MORE ON THE WEB

- [Cisco MDS 9222i specifications](#)
- [Cisco MDS 9222i assets on PartnerWorld](#)
- [Cisco MDS 9222i info on IBM.com](#)

- *Modular design provides “pay-as-you-grow” scalability and configuration flexibility*
- *Excellent availability with redundant, hot swappable components and non-disruptive firmware upgrades*
- *Intelligent network services such as Virtual SAN (VSAN) capability for SAN consolidation into virtual SAN islands on a single physical fabric*
- *Enterprise, Mainframe, and Data Center Network Manager (DCNM) Advanced*
- *Packages provide added intelligence and value.*

Cisco MDS 9506, 9509, and 9513

The Cisco MDS 9500 Series Multilayer Directors for IBM System Storage are director-class storage area networking (SAN) switches designed for deployment in scalable enterprise and service provider clouds to enable flexibility, resiliency,

and reliability. Layering a comprehensive set of intelligent features onto a high-performance, protocol-independent switch fabric, the MDS 9500 Series Multilayer Directors address the critical requirements of large virtualized data center storage environments such as high availability, security, scalability, ease-of-management, and simple integration of new technologies for extremely flexible data center SAN solutions.

Sharing the same operating system and management interface with other Cisco data center switches, the MDS 9500 Directors can help enable smooth deployment of unified fabrics with high-performance Fibre Channel and FCoE connectivity for



MORE ON THE WEB

- [Cisco MDS 9500 series Multilayer Director specifications](#)
- [Cisco MDS 9500 Series Multilayer Directors assets on Partnerworld](#)
- [Cisco MDS 9500 Series Multilayer Directors info on IBM.com](#)

low total cost of ownership (TCO). Compatible with all generations of Cisco MDS 9000 Family Fibre Channel Switching Modules, the MDS 9500 Series Multilayer Directors can help provide outstanding investment protection.

The Cisco MDS 9513 offers up to 528 1, 2, 4, and 8 Gbps autosensing Fibre Channel ports and up to 264 10 Gbps Fibre Channel ports in an 11-slot modular chassis. The MDS 9513 provides up to 1056 Fibre Channel ports in a single rack.

The Cisco MDS 9509 offers up to 432 1, 2, 4, and 8 Gbps autosensing Fibre Channel ports and up to 216 10 Gbps Fibre Channel ports in a nine-slot modular chassis. The MDS 9509 provides up to 864 Fibre Channel ports in a single rack.

The Cisco MDS 9506 provides up to 288 1, 2, 4, and 8 Gbps autosensing Fibre Channel ports and up to 144 10 Gbps Fibre Channel ports in a six-slot modular chassis.

Here are some quick MDS 9500 director facts:

- Offers scalability to 192, 336, and 528 maximum Fibre Channel port count at 1, 2, 4, 8, and 10 Gbps Fibre Channel speed
- Multilayer architecture transparently integrates Fibre Channel, Fibre Channel over Ethernet (FCoE), IBM FICON, Internet Small Computer System Interface (iSCSI), and Fibre Channel over IP (FCIP) in one system
- 32- and 48-port 8 Gbps Advanced Fibre Channel switching modules designed to allow a port to be configured as either 1, 2, 4, 8, or 10 Gbps, consolidating all ports into the same Fibre Channel switching module

- High-performance Inter-Switch Links (ISLs) that provide additional availability at the fabric level; PortChannel capability allows users to aggregate up to 16 physical links into one logical bundle
- Supports all generations of Cisco MDS 9000 Family switching modules, providing outstanding investment protection
- Delivers comprehensive security and unified SAN management
- Includes Virtual SAN (VSAN) capability for SAN consolidation into virtual SAN islands on a single physical fabric.

Cisco MDS 9710 Multilayer Director

A next-generation, director-class SAN switch designed for deployment in large-scale storage networks, Cisco MDS 9710 Multilayer Director for IBM System Networking enables not only enterprise clouds, but business transformation.

MORE ON THE WEB

- [Cisco MDS 9710 Multilayer Director specifications](#)
- [Cisco MDS 9710 Multilayer Director assets on Partnerworld](#)
- [Cisco MDS 9710 Multilayer Director info on IBM.com](#)

By adding enterprise connectivity options that support FICON, MDS 9710 delivers a high-performing and reliable FICON infrastructure designed to support fast and scalable System z servers. The MDS 9700 platform also provides multi-protocol flexibility for SANs delivering both 16-Gbps Fibre Channel and 10-Gbps Fibre Channel over Ethernet (FCoE) capabilities.

Here are some quick Cisco MDS 9710 facts:

- *Helps future-proof the data center for cloud and big data with next-generation capabilities*
- *Meets scalability requirements and manages TCO; scales up to 384 Fibre Channel or Fibre Channel over Ethernet ports per chassis*
- *Supports IBM System z IBM FICON and Fibre Channel protocol environments*
- *Combines large-scale storage networks and multiple storage protocols on a single converged network to reduce complexity and enable hyper agility*
- *Attains high availability with fully redundant components*

- *Benefits from intelligent network features such as virtual storage area network (SAN) technology, access control lists, and intelligent frame processing.*

